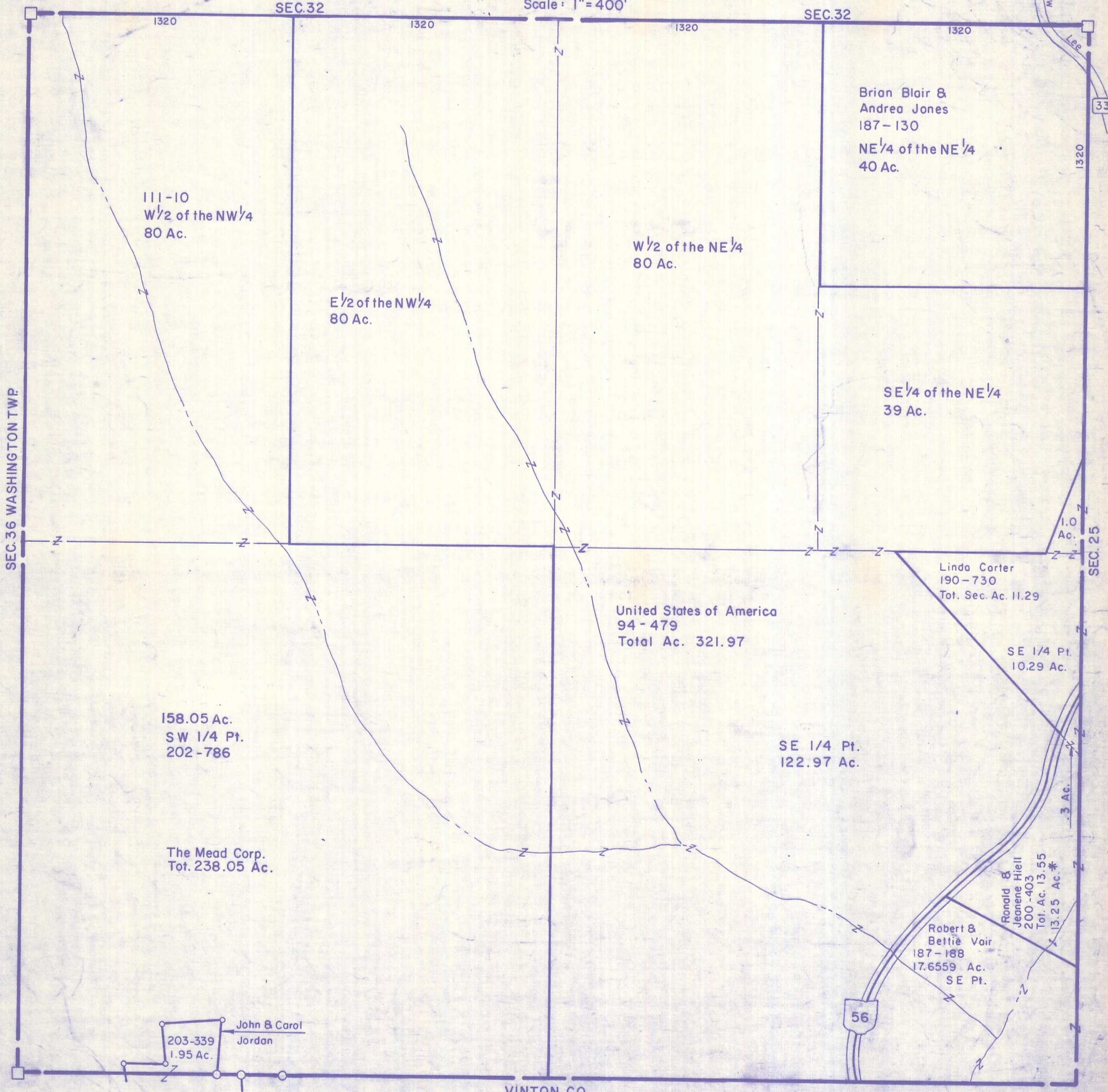


HOCKING COUNTY

Sec. 31 T 12 R 16

STARR TWP.

Scale: 1" = 400'



111-10
W 1/2 of the NW 1/4
80 Ac.

E 1/2 of the NW 1/4
80 Ac.

W 1/2 of the NE 1/4
80 Ac.

Brian Blair &
Andrea Jones
187-130
NE 1/4 of the NE 1/4
40 Ac.

SE 1/4 of the NE 1/4
39 Ac.

Linda Carter
190-730
Tot. Sec. Ac. 11.29

SE 1/4 Pt.
10.29 Ac.

158.05 Ac.
SW 1/4 Pt.
202-786

SE 1/4 Pt.
122.97 Ac.

United States of America
94-479
Total Ac. 321.97

Ronald &
Jeanene Hiell
200-403
Tot. Ac. 13.55

Robert &
Bettie Vair
187-188
17.6559 Ac.
SE Pt.

203-339
1.95 Ac.

John & Carol
Jordan

SEC. 36 WASHINGTON TWP.

SEC. 25

VINTON CO.

SEC. 31