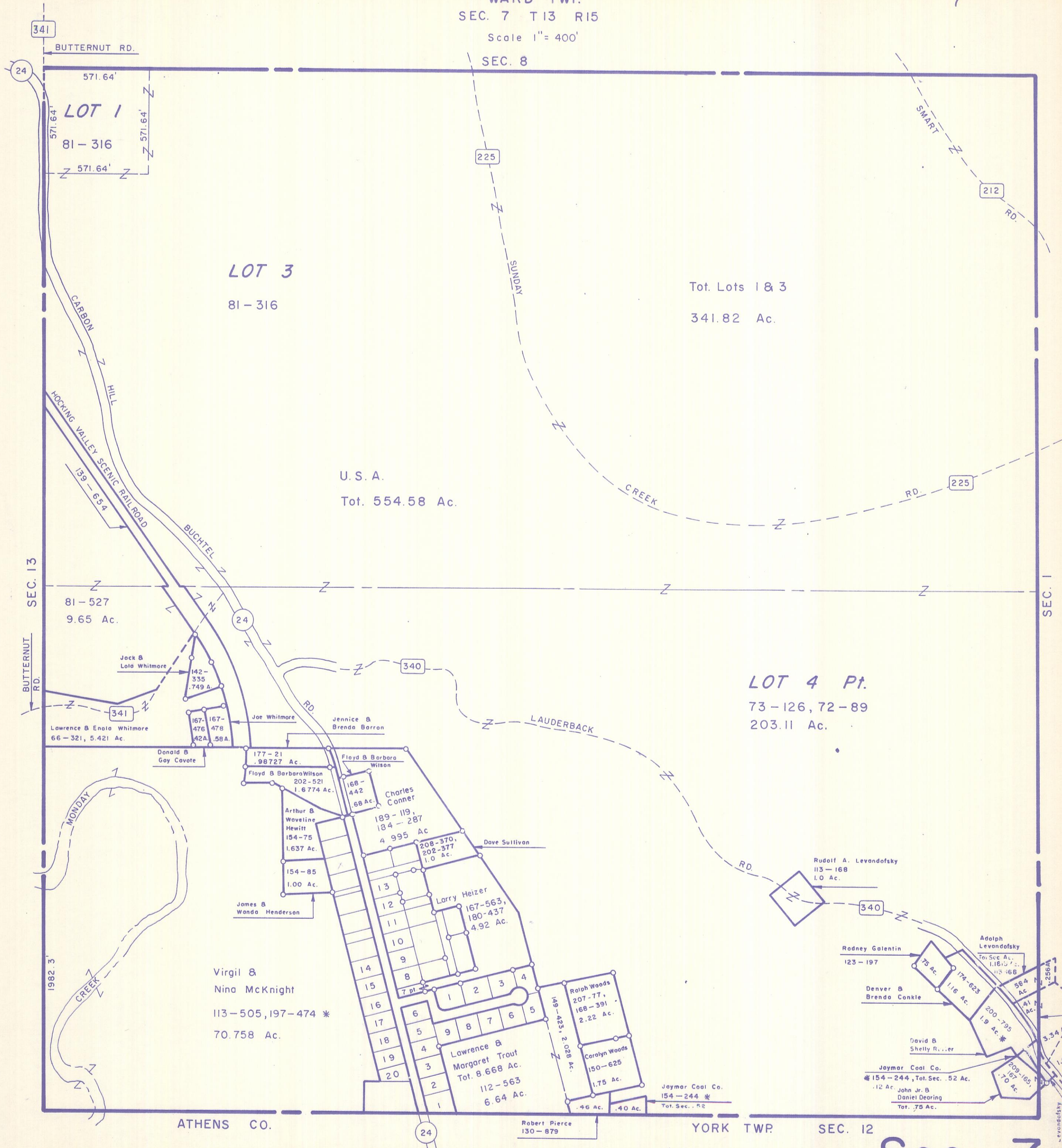


HOCKING COUNTY

WARD TWP.

SEC. 7 T13 R15

Scale 1" = 400'



LOT 1
81-316

LOT 3
81-316

Tot. Lots 1 & 3
341.82 Ac.

U.S.A.
Tot. 554.58 Ac.

LOT 4 Pt.
73-126, 72-89
203.11 Ac.

Virgil &
Nina McKnight
113-505, 197-474 *
70.758 Ac.

Lawrence &
Margaret Trout
Tot. 8.668 Ac.
112-563
6.64 Ac.

Rodney Galentin 123-197

Adolph Levandofsky
Tot. Sec. Ac. 1.1613
113-168

Denver B. Brenda Conkle 174-623 1.16 Ac.
200-735 1.9 Ac.*

David B. Shelly R. 209-165 1.70 Ac.

Joymer Coal Co. 154-244, Tot. Sec. 52 Ac.
.12 Ac. John Jr. B. Daniel Dearing Tot. 78 Ac.

Christina Phillips, 42-511
Tot. 4.75 Ac.

Sec. 7

Adolph Levandofsky
Tot. Sec. Ac. 1.1613
113-168
190-566
341.3 Ac.