

# HOCKING COUNTY

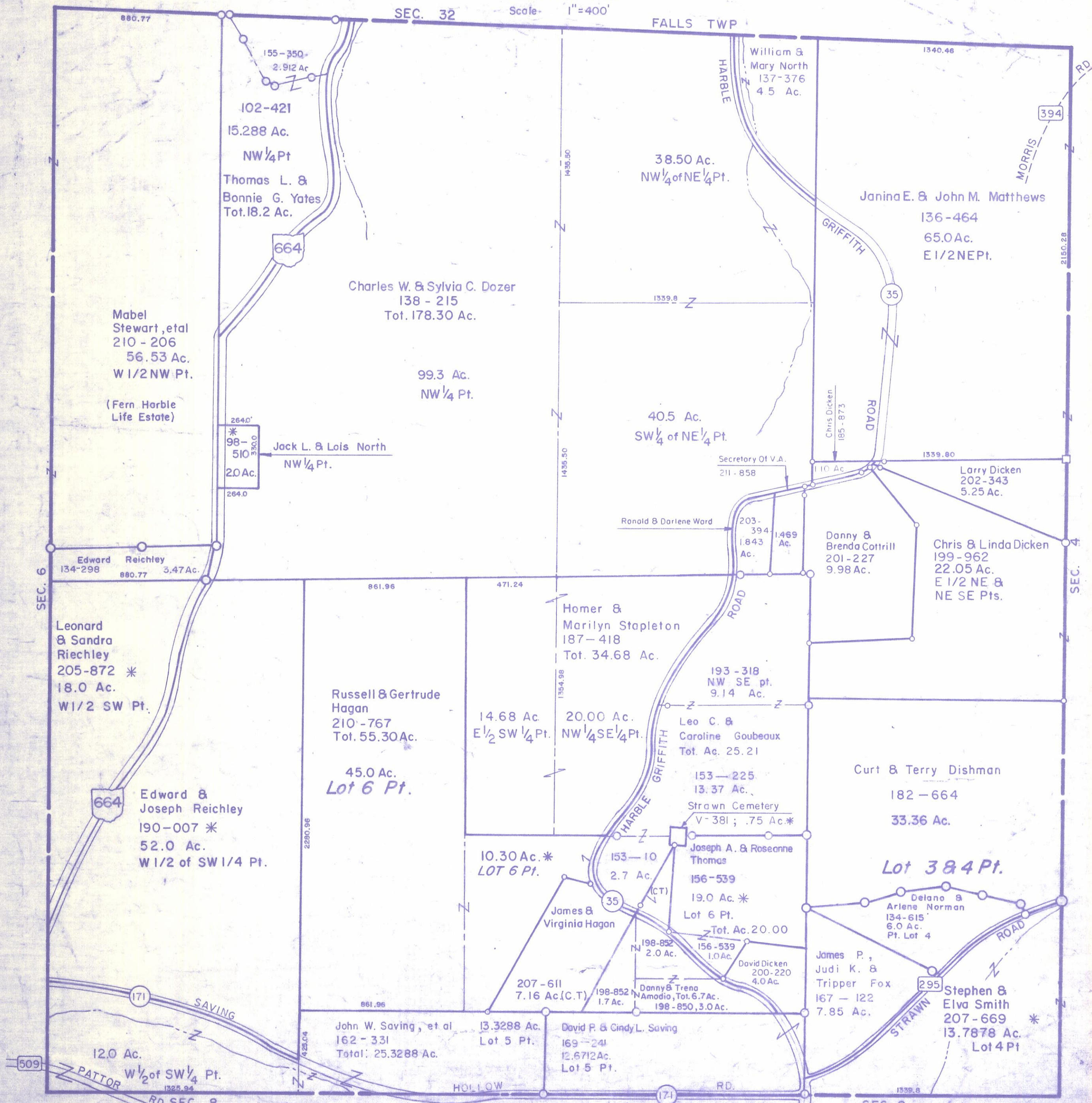
Sec. 5 T13 R17

WASHINGTON TWP.

Scale - 1" = 400'

SEC. 32

FALLS TWP



880.77

155-350  
2.912 Ac

102-421  
15.288 Ac.  
NW 1/4 Pt

Thomas L. &  
Bonnie G. Yates  
Tot. 18.2 Ac.

664

Charles W. & Sylvia C. Dozer  
138 - 215  
Tot. 178.30 Ac.

99.3 Ac.  
NW 1/4 Pt.

Mabel  
Stewart, et al  
210 - 206  
56.53 Ac.  
W 1/2 NW Pt.

(Fern Harble  
Life Estate)

264.0'  
\*  
98-  
510  
330.0  
20 Ac.

Jack L. & Lois North  
NW 1/4 Pt.

Edward Reichley  
134-298 880.77 3.47 Ac.

Leonard  
& Sandra  
Riechley  
205-872 \*  
18.0 Ac.  
W 1/2 SW Pt.

664

Edward &  
Joseph Reichley  
190-007 \*  
52.0 Ac.  
W 1/2 of SW 1/4 Pt.

Russell & Gertrude  
Hagan  
210-767  
Tot. 55.30 Ac.

45.0 Ac.  
Lot 6 Pt.

14.68 Ac.  
E 1/2 SW 1/4 Pt.

20.00 Ac.  
NW 1/4 SE 1/4 Pt.

10.30 Ac. \*  
LOT 6 Pt.

James &  
Virginia Hagan

207-611  
7.16 Ac. (C.T.)

John W. Saving, et al  
162 - 331  
Total: 25.3288 Ac.

13.3288 Ac.  
Lot 5 Pt.

David P. & Cindy L. Saving  
169-241  
12.6712 Ac.  
Lot 5 Pt.

William &  
Mary North  
137-376  
4.5 Ac.

38.50 Ac.  
NW 1/4 of NE 1/4 Pt.

40.5 Ac.  
SW 1/4 of NE 1/4 Pt.

Secretary Of V.A.  
211 - 858

Ronald & Darlene Ward  
203-  
394  
1.843  
Ac.

Homer &  
Marilyn Stapleton  
187-418  
Tot. 34.68 Ac.

193-318  
NW SE pt.  
9.14 Ac.

Leo C. &  
Caroline Goubeaux  
Tot. Ac. 25.21

153-225  
13.37 Ac.  
Strawn Cemetery  
V-381; .75 Ac.\*

Joseph A. & Roseanne  
Thomas  
156-539  
19.0 Ac. \*  
Lot 6 Pt.

153-10  
2.7 Ac.  
(CT)

198-852  
2.0 Ac.

156-539  
1.0 Ac.

198-852  
1.7 Ac.

Danny & Treva  
Amodio, Tot. 6.7 Ac.  
198-850, 3.0 Ac.

David Dicken  
200-220  
4.0 Ac.

James P.,  
Judi K. &  
Tripper Fox  
167 - 122  
7.85 Ac.

Stephen &  
Elva Smith  
207-669 \*  
13.7878 Ac.  
Lot 4 Pt

Curt & Terry Dishman  
182-664  
33.36 Ac.

Lot 3 & 4 Pt.

Delano &  
Arlene Norman  
134-615  
6.0 Ac.  
Pt. Lot 4

1340.46

394

MORRIS

Janina E. & John M. Matthews  
136-464  
65.0 Ac.  
E 1/2 NE Pt.

GRIFFITH

35

Chris Dicken  
185-873

ROAD

1339.80

Larry Dicken  
202-343  
5.25 Ac.

Chris & Linda Dicken  
199-962  
22.05 Ac.  
E 1/2 NE &  
NE SE Pts.

SEC. 6

SEC. 8

171 SAVING

12.0 Ac.  
W 1/2 of SW 1/4 Pt.

509 PATTOR

RD. SEC. 8

HOLLOW

171

RD.

SEC. 8

# SEC. 5