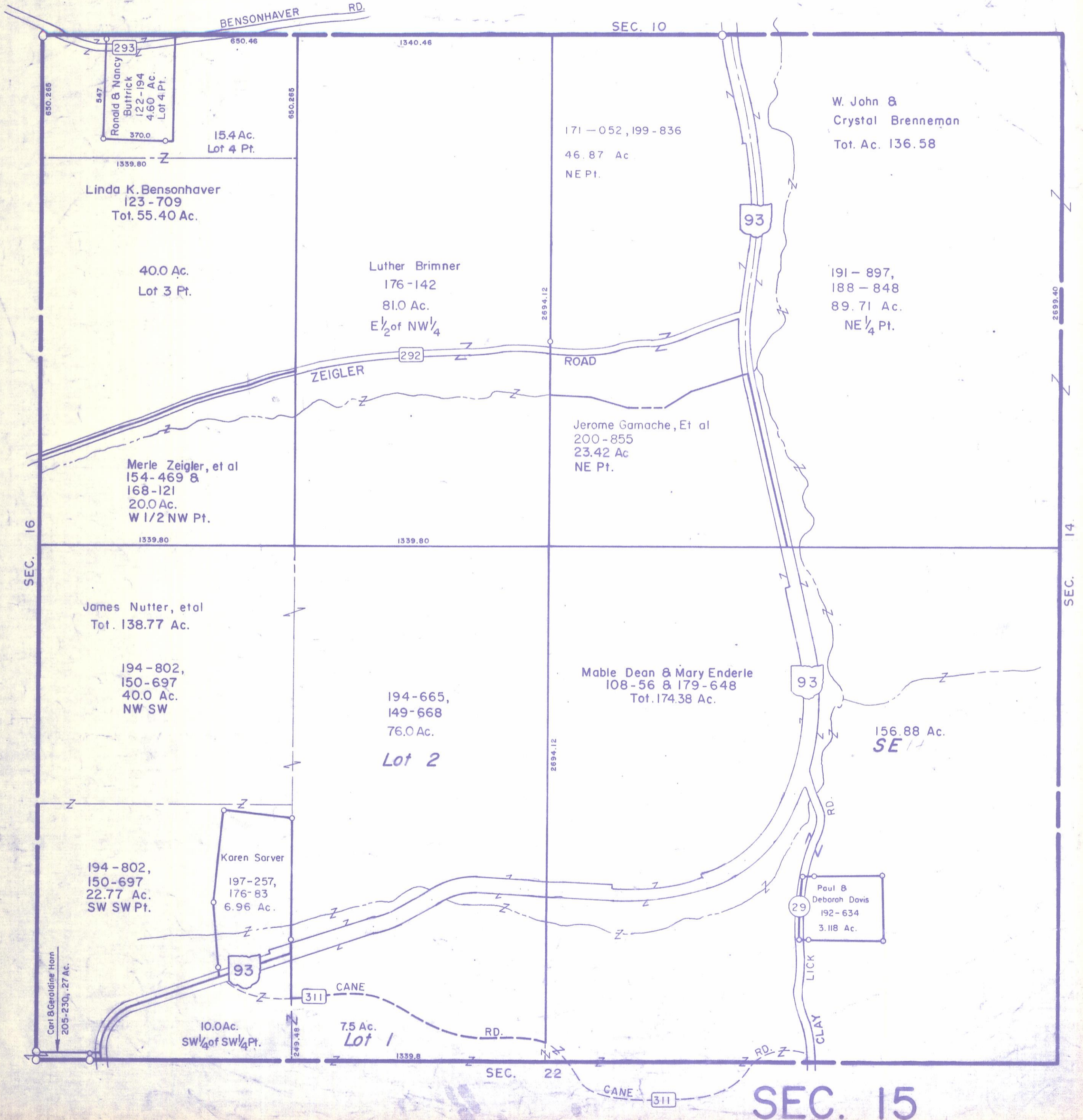


HOCKING COUNTY

Sec. 15 - T13 R17

WASHINGTON TWP.

Scale 1" = 400'



Ronald & Nancy
Buttrick
122-194
4.60 Ac.
Lot 4 Pt.
370.0

15.4 Ac.
Lot 4 Pt.

Linda K. Bensonhaver
123-709
Tot. 55.40 Ac.

40.0 Ac.
Lot 3 Pt.

Luther Brimmer
176-142
81.0 Ac.
E 1/2 of NW 1/4

Merle Zeigler, et al
154-469 &
168-121
20.0 Ac.
W 1/2 NW Pt.

James Nutter, et al
Tot. 138.77 Ac.

194-802,
150-697
40.0 Ac.
NW SW

194-802,
150-697
22.77 Ac.
SW SW Pt.

Karen Sorver
197-257,
176-83
6.96 Ac.

10.0 Ac.
SW 1/4 of SW 1/4 Pt.

7.5 Ac.
Lot 1

171-052, 199-836
46.87 Ac.
NE Pt.

W. John &
Crystal Brenneman
Tot. Ac. 136.58

191-897,
188-848
89.71 Ac.
NE 1/4 Pt.

Jerome Gamache, Et al
200-855
23.42 Ac.
NE Pt.

Mable Dean & Mary Enderle
108-56 & 179-648
Tot. 174.38 Ac.

156.88 Ac.
SE 1/4

Paul &
Deborah Davis
192-634
3.118 Ac.

SEC. 15