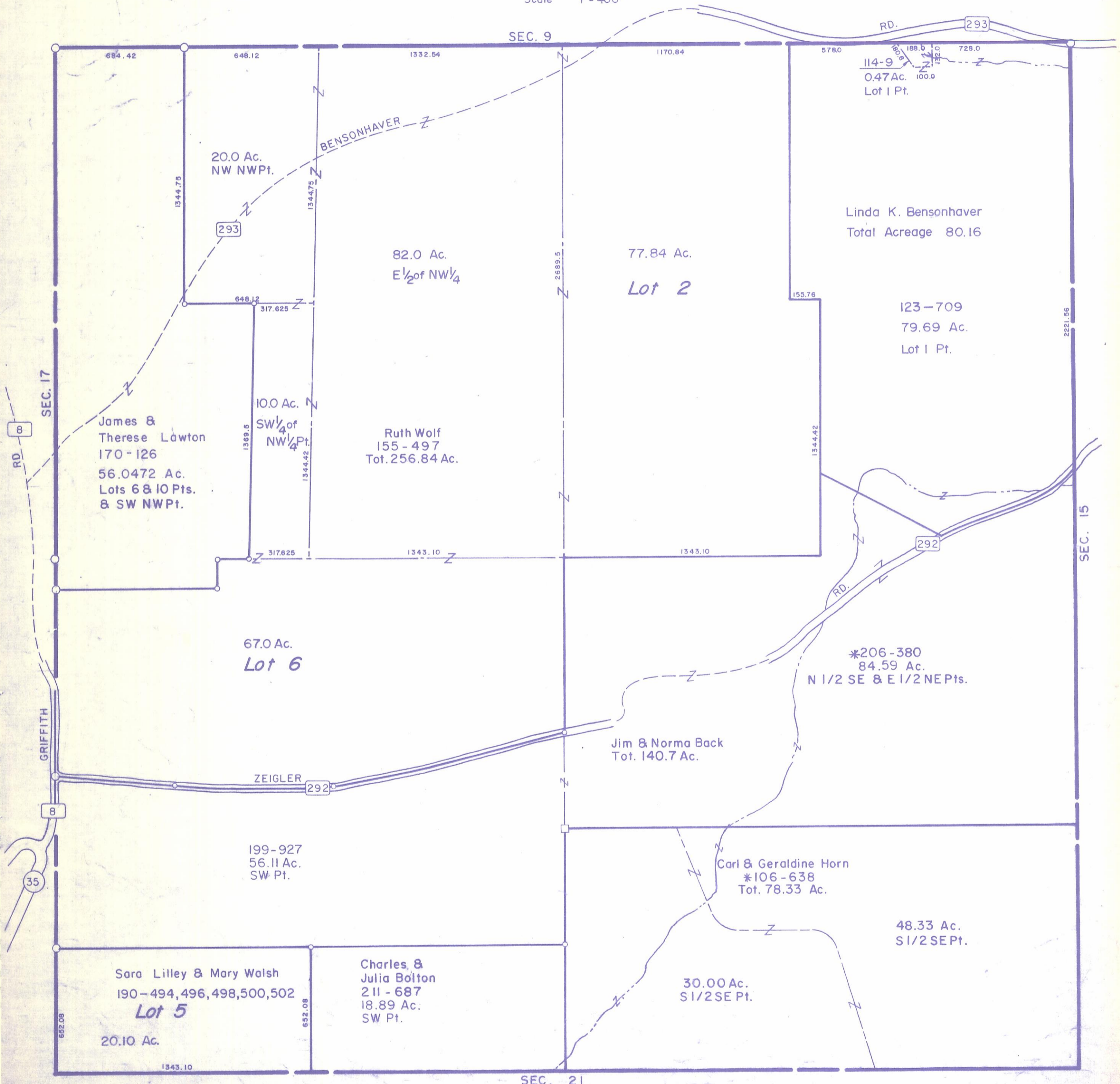


HOCKING COUNTY

Sec. 16 T13 R17

WASHINGTON TWP.

Scale 1" = 400'



SEC. 9

RD. 293

684.42 648.12 1332.54 1170.84 578.0 728.0
1344.75 1344.75 1344.75
20.0 Ac. NW NW Pt.
293
82.0 Ac. E 1/2 of NW 1/4
77.84 Ac. Lot 2
Linda K. Bensonhaver
Total Acreage 80.16
123-709
79.69 Ac. Lot 1 Pt.
155.76
1344.42
10.0 Ac. SW 1/4 of NW 1/4 Pt.
1369.5 1344.42
James & Therese Lawton
170-126
56.0472 Ac. Lots 6 & 10 Pts. & SW NW Pt.
Ruth Wolf
155-497
Tot. 256.84 Ac.
648.12 317.625
317.625 1343.10 1343.10
67.0 Ac. Lot 6
*206-380
84.59 Ac. N 1/2 SE & E 1/2 NE Pts.
RD. 292
Jim & Norma Back
Tot. 140.7 Ac.
ZEIGLER 292
199-927
56.11 Ac. SW Pt.
Carl & Geraldine Horn
*106-638
Tot. 78.33 Ac.
48.33 Ac. S 1/2 SE Pt.
30.00 Ac. S 1/2 SE Pt.
Sara Lilley & Mary Walsh
190-494, 496, 498, 500, 502
Lot 5
20.10 Ac.
652.08 652.08
Charles & Julia Bolton
211-687
18.89 Ac. SW Pt.
1343.10

SEC. 21

SEC. 16