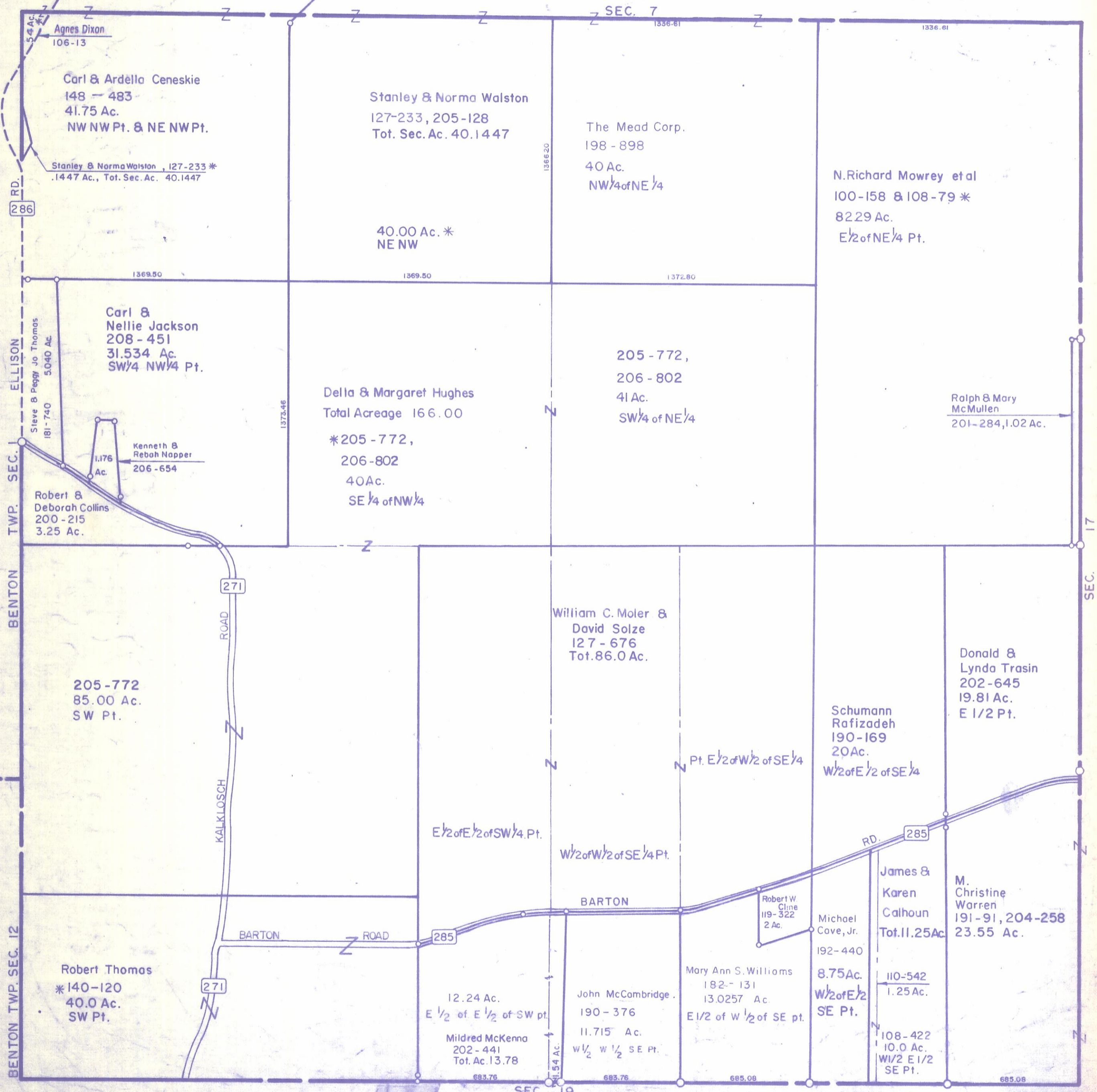


HOCKING COUNTY

Sec. 18 T13 R17

WASHINGTON TWP.

Scale 1"=400'



Agnes Dixon
106-13

Carl & Ardella Ceneskie
148 - 483
41.75 Ac.
NW NW Pt. & NE NW Pt.

Stanley & Norma Walston, 127-233 *
.1447 Ac., Tot. Sec. Ac. 40.1447

Stanley & Norma Walston
127-233, 205-128
Tot. Sec. Ac. 40.1447

The Mead Corp.
198 - 898
40 Ac.
NW 1/4 of NE 1/4

N. Richard Mowrey et al
100-158 & 108-79 *
82.29 Ac.
E 1/2 of NE 1/4 Pt.

Carl & Nellie Jackson
208 - 451
31.534 Ac.
SW 1/4 NW 1/4 Pt.

Della & Margaret Hughes
Total Acreage 166.00

205 - 772,
206 - 802
41 Ac.
SW 1/4 of NE 1/4

Ralph & Mary McMullen
201-284, 1.02 Ac.

Robert & Deborah Collins
200 - 215
3.25 Ac.

Kenneth & Rebah Napper
206 - 654
1.176 Ac.

*205 - 772,
206 - 802
40 Ac.
SE 1/4 of NW 1/4

William C. Moler & David Solze
127 - 676
Tot. 86.0 Ac.

205 - 772
85.00 Ac.
SW Pt.

Donald & Lynda Trasin
202 - 645
19.81 Ac.
E 1/2 Pt.

Schumann Rafizadeh
190-169
20 Ac.
W 1/2 of E 1/2 of SE 1/4

E 1/2 of E 1/2 of SW 1/4 Pt.

W 1/2 of W 1/2 of SE 1/4 Pt.

James & Karen Calhoun
Tot. 11.25 Ac.

M. Christine Warren
191-91, 204-258
23.55 Ac.

Robert Thomas
*140-120
40.0 Ac.
SW Pt.

12.24 Ac.
E 1/2 of E 1/2 of SW pt.
Mildred McKenna
202 - 441
Tot. Ac. 13.78

John McCombridge
190 - 376
11.715 Ac.
W 1/2 W 1/2 SE Pt.

Mary Ann S. Williams
182 - 131
13.0257 Ac.
E 1/2 of W 1/2 of SE pt.

8.75 Ac.
W 1/2 of E 1/2 SE Pt.

110-542
1.25 Ac.
108-422
10.0 Ac.
W 1/2 E 1/2 SE Pt.

SEC. 18