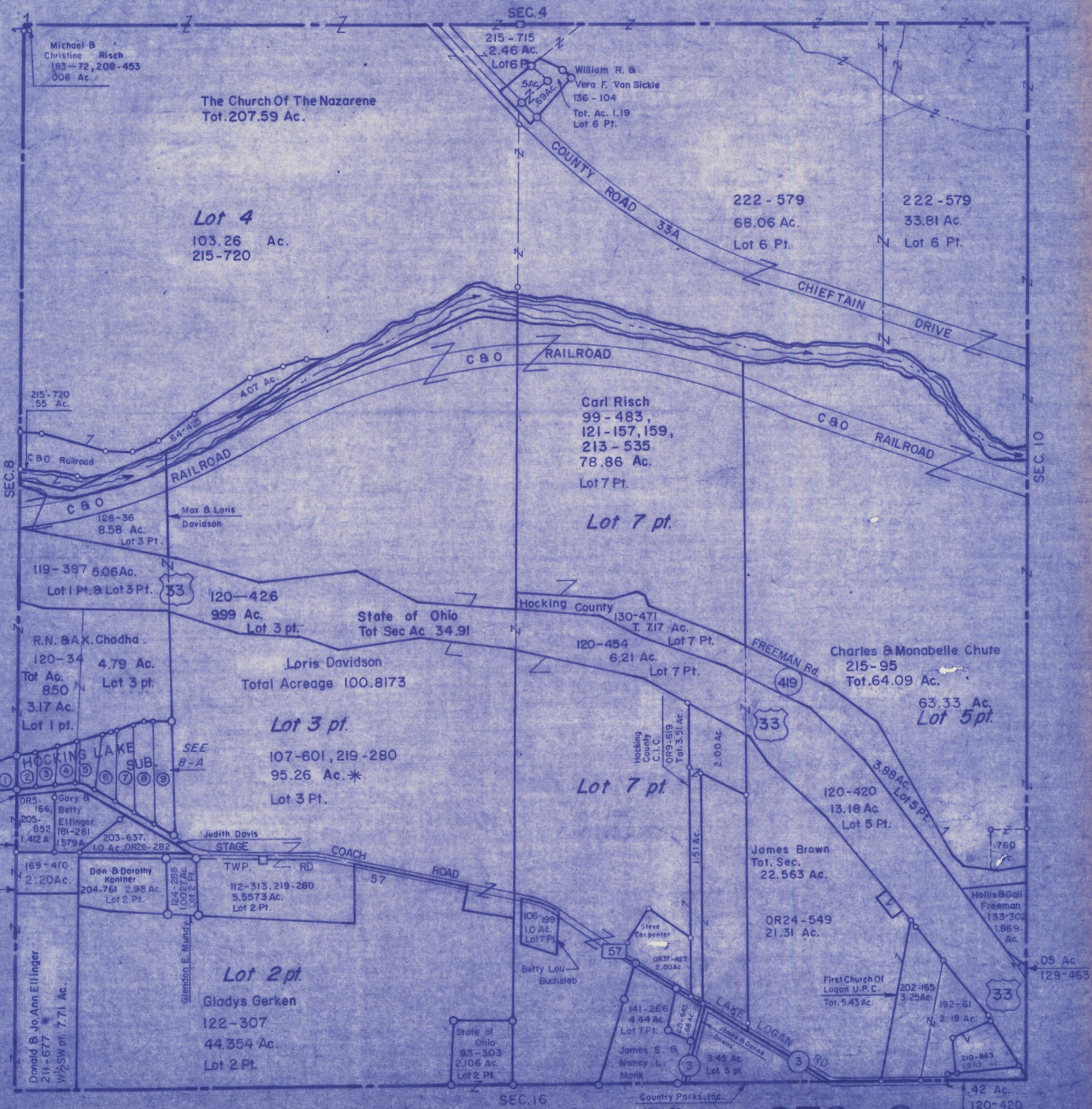


HOCKING COUNTY

Sec. 9 T.14 R.17

FALLS TWP

Scale 1"=400'



Michael B  
Christine Risch  
183-72, 208-453  
006 Ac.

The Church Of The Nazarene  
Tot. 207.59 Ac.

**Lot 4**  
103.26 Ac.  
215-720

SEC. 4  
215-715  
2.46 Ac.  
Lot 6 Pt.

William R. &  
Vera F. Van Sickle  
136-104  
Tot. Ac. 1.19  
Lot 6 Pt.

222-579  
68.06 Ac.  
Lot 6 Pt.

222-579  
33.81 Ac.  
Lot 6 Pt.

Carl Risch  
99-483,  
121-157, 159,  
213-535  
78.86 Ac.  
Lot 7 Pt.

**Lot 7 pt.**

215-720  
.55 Ac.

126-36  
8.58 Ac.  
Lot 3 Pt.

119-397 5.06 Ac.  
Lot 1 Pt. & Lot 3 Pt.

120-426  
999 Ac.  
Lot 3 pt.

State of Ohio  
Tot Sec Ac 34.91

Loris Davidson  
Total Acreage 100.8173

**Lot 3 pt.**

107-601, 219-280  
95.26 Ac.\*  
Lot 3 Pt.

130-471  
T. 717 Ac.  
Lot 7 Pt.

Charles & Monabelle Chute  
215-95  
Tot. 64.09 Ac.

63.33 Ac.  
**Lot 5 pt.**

R.N. & A.K. Chadha  
120-34 4.79 Ac.  
Tot Ac. 8.50  
3.17 Ac.  
Lot 1 pt.

HOCKING LAKE SUB.  
SEE B-A

OR5-166  
205-852  
1,412 A.

Gary & Betty  
Ellinger  
181-281  
1,579 A.

203-637  
1.0 Ac. OR26-282

Judith Davis  
STAGE RD

Don & Dorothy  
Konner  
204-761 2.98 Ac.  
Lot 2 Pt.

124-288  
1,002.7 Ac.  
Lot 2 Pt.

112-313, 219-280  
5.5573 Ac.  
Lot 2 Pt.

**Lot 2 pt.**

Gladys Gerken  
122-307  
44.354 Ac.  
Lot 2 Pt.

Donald & Jo Ann Ellinger  
211-677  
W/2 SW pt. 7.71 Ac.

State of Ohio  
93-303  
2,106 Ac.  
Lot 2 Pt.

SEC. 16

Country Parks, Inc.  
OR9-89

SEC. 9

.42 Ac.  
120-420