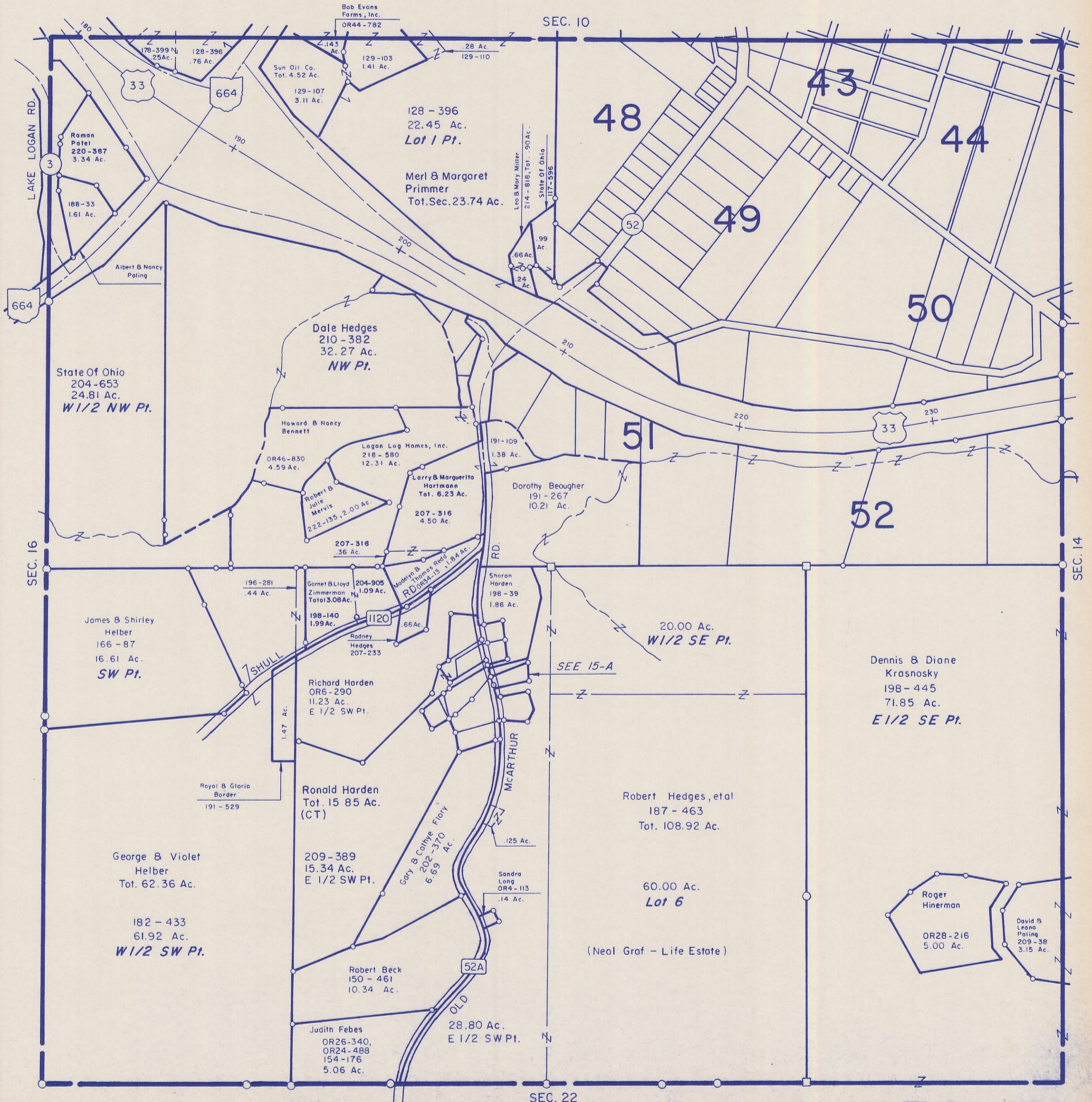


HOCKING COUNTY

Sec. 15 T14 R17

FALLS TWP.

Scale 1" = 400'



Lake Logan Rd.

SEC. 16

SEC. 10

SEC. 14

SEC. 22

SEC. 15

178-399 N. 25 Ac.
128-396 76 Ac.
129-103 1.41 Ac.
129-107 3.11 Ac.
128-396 22.45 Ac. Lot 1 Pt.
Merl & Margaret Primer Tot. Sec. 23.74 Ac.
Leo & Mary Miller 214-818, Tot. .90 Ac.
State of Ohio 117-596
99 Ac.
66 Ac.
24 Ac.
28 Ac.
129-110
43
44
48
49
50
51
52
33
664
3
188-33 1.61 Ac.
Albert & Nancy Pating
State of Ohio 204-653 24.81 Ac. W 1/2 NW Pt.
Dale Hedges 210-382 32.27 Ac. NW Pt.
Howard & Nancy Bennett
OR46-830 4.59 Ac.
Logan Log Homes, Inc. 218-580 12.31 Ac.
Robert & Julie Mervis 222-135 2.00 Ac.
Larry & Marguerite Harimann Tot. 6.23 Ac.
207-316 4.50 Ac.
Dorothy Beougher 191-267 10.21 Ac.
207-316 .36 Ac.
Sharon Harden 198-39 1.86 Ac.
Garnet & Lloyd Zimmerman Total 3.08 Ac.
204-905 1.09 Ac.
198-140 1.99 Ac.
Rodney Hedges 207-233
209-389 15.34 Ac. E 1/2 SW Pt.
Richard Harden OR6-290 11.23 Ac. E 1/2 SW Pt.
Ronald Harden Tot. 15.85 Ac. (CT)
Gary & Cathie Flory 202-370 6.69 Ac.
Sandra Long OR4-113 .14 Ac.
20.00 Ac. W 1/2 SE Pt.
Dennis & Diane Krasnosky 198-445 71.85 Ac. E 1/2 SE Pt.
Robert Hedges, et al 187-463 Tot. 108.92 Ac.
60.00 Ac. Lot 6 (Neal Graf - Life Estate)
George & Violet Helber Tot. 62.36 Ac.
182-433 61.92 Ac. W 1/2 SW Pt.
Robert Beck 150-461 10.34 Ac.
Judith Febes OR26-340, OR24-488 154-176 5.06 Ac.
Royal & Gloria Border 191-529
1.47 Ac.
Shull Rd.
McArthur Rd.
52A
125 Ac.
125 Ac.
125 Ac.