

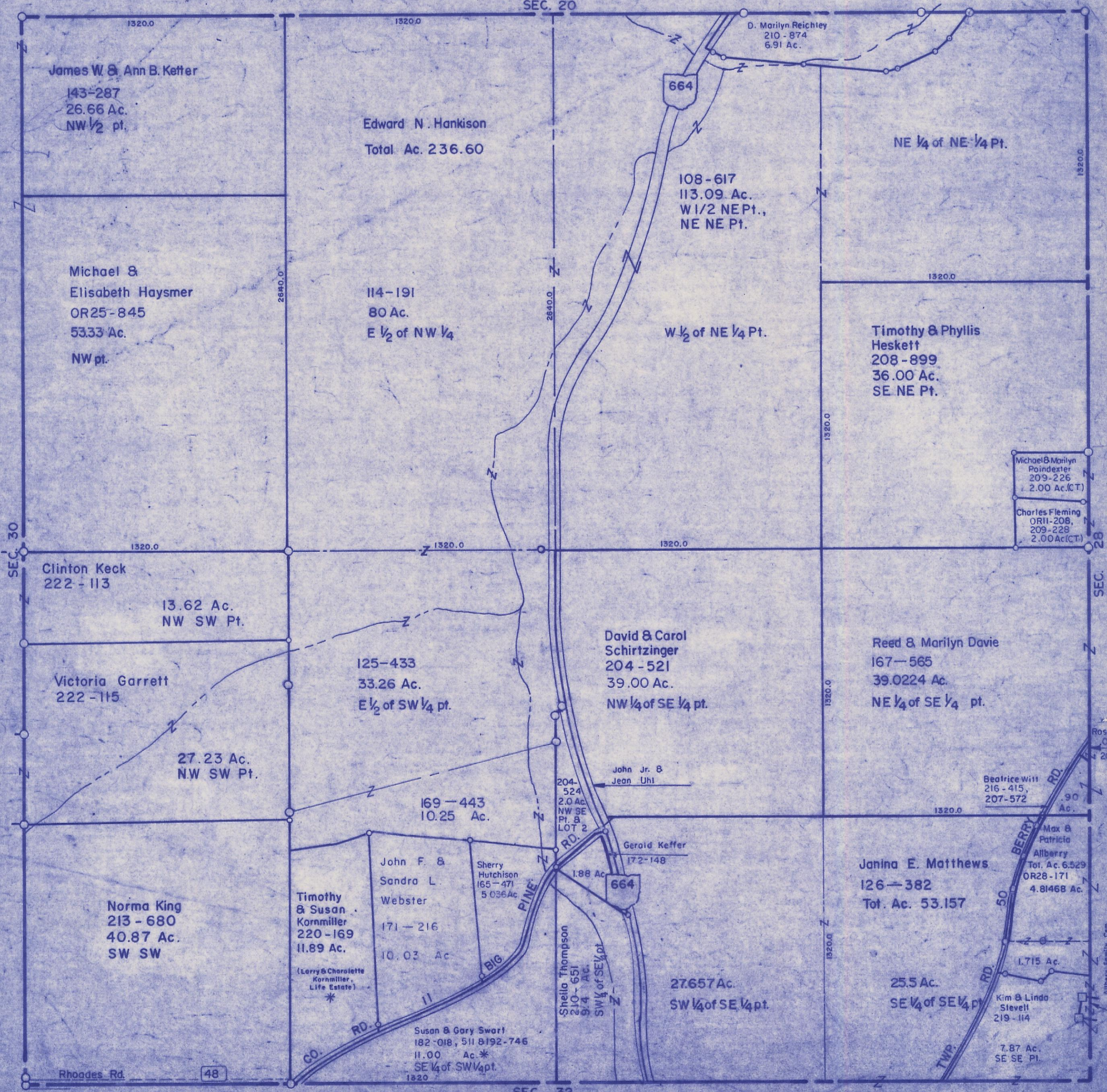
HOCKING COUNTY

Sec. 29 T14 R17

FALLS TWP.

Scale 1"=400

SEC. 20



James W. & Ann B. Keffer
143-287
26.66 Ac.
NW 1/2 pt.

Edward N. Hankison
Total Ac. 236.60

D. Marilyn Reichley
210-874
6.91 Ac.

108-617
113.09 Ac.
W 1/2 NE Pt.,
NE NE Pt.

NE 1/4 of NE 1/4 Pt.

Michael &
Elisabeth Haysmer
OR25-845
53.33 Ac.
NW pt.

114-191
80 Ac.
E 1/2 of NW 1/4

W 1/2 of NE 1/4 Pt.

Timothy & Phyllis
Heskett
208-899
36.00 Ac.
SE NE Pt.

Michael & Marilyn
Poindexter
209-226
2.00 Ac.(CT)

Charles Fleming
OR11-208,
209-228
2.00 Ac.(CT)

Clinton Keck
222-113

13.62 Ac.
NW SW Pt.

David & Carol
Schirtzinger
204-521
39.00 Ac.
NW 1/4 of SE 1/4 pt.

Reed & Marilyn Davie
167-565
39.0224 Ac.
NE 1/4 of SE 1/4 pt.

Victoria Garrett
222-115

125-433
33.26 Ac.
E 1/2 of SW 1/4 pt.

27.23 Ac.
NW SW Pt.

John Jr. &
Jean Uhl

204-524
2.0 Ac.
NW SE
Pt. B.
LOT 2

Beatrice Will
216-415,
207-572
Ac.

169-443
10.25 Ac.

Gerald Keffer
172-148

Max &
Patricia
Alberry
Tot. Ac. 6.529
OR28-171
4.81468 Ac.

Norma King
213-680
40.87 Ac.
SW SW

Timothy
& Susan
Kornmiller
220-169
11.89 Ac.

John F. &
Sandra L.
Webster
171-216
10.03 Ac.

Sherry
Hutchison
165-471
5.036 Ac.

Shella Thompson
210-651
9.4 Ac.
SW 1/4 of SE 1/4 pt.

Janina E. Matthews
126-382
Tot. Ac. 53.157

(Larry & Charlotte
Kornmiller,
Life Estate)

Susan & Gary Swart
182-018, 511 & 192-746
11.00 Ac.*
SE 1/4 of SW 1/4 pt.

27.657 Ac.
SW 1/4 of SE 1/4 pt.

25.5 Ac.
SE 1/4 of SE 1/4 pt.

1.715 Ac.
Kim & Linda
Stevell
219-114

7.87 Ac.
SE SE Pt.

Rhodes Rd. 48

SEC. 32

SEC. 29