

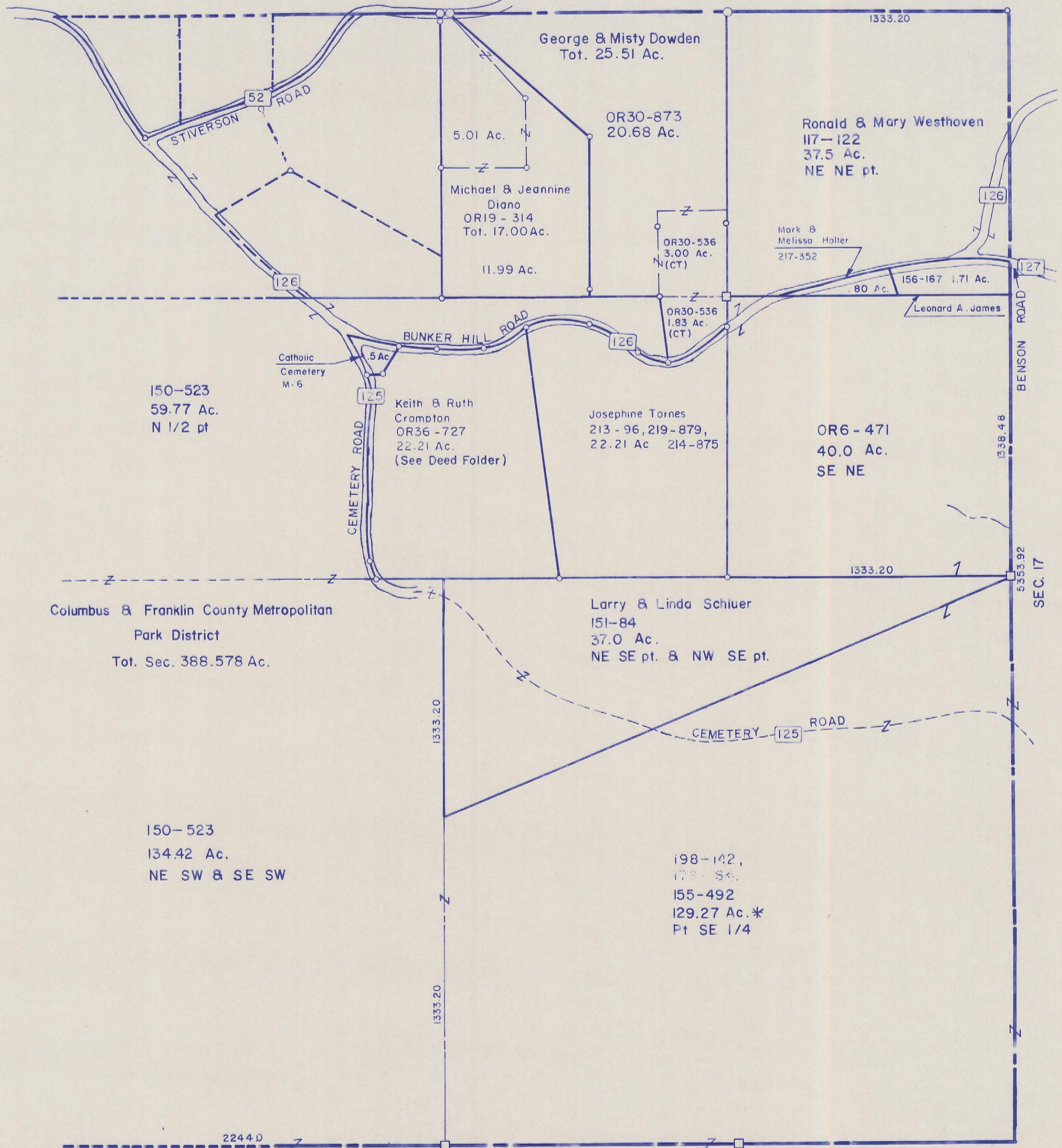
HOCKING COUNTY

GOOD HOPE

SEC. 18 Pt. T 13 R 18

Scale 1"=400'

FAIRFIELD COUNTY



George & Misty Dowden
Tot. 25.51 Ac.

OR30-873
20.68 Ac.

Ronald & Mary Westhoven
117-122
37.5 Ac.
NE NE pt.

Michael & Jeannine
Diano
OR19-314
Tot. 17.00 Ac.

11.99 Ac.

Mark &
Melissa Haller
217-352

OR30-536
3.00 Ac.
N (CT)

OR30-536
1.83 Ac.
(CT)

156-167 1.71 Ac.

Leonard A. James

150-523
59.77 Ac.
N 1/2 pt

Catholic
Cemetery
M-6

Keith & Ruth
Crompton
OR36-727
22.21 Ac.
(See Deed Folder)

Josephine Tornes
213-96, 219-879,
22.21 Ac 214-875

OR6-471
40.0 Ac.
SE NE

Columbus & Franklin County Metropolitan
Park District
Tot. Sec. 388.578 Ac.

Larry & Linda Schluer
151-84
37.0 Ac.
NE SE pt. & NW SE pt.

150-523
134.42 Ac.
NE SW & SE SW

198-142,
178-84,
155-492
129.27 Ac.*
Pt SE 1/4

SEC 19

Sec 18 pt.