

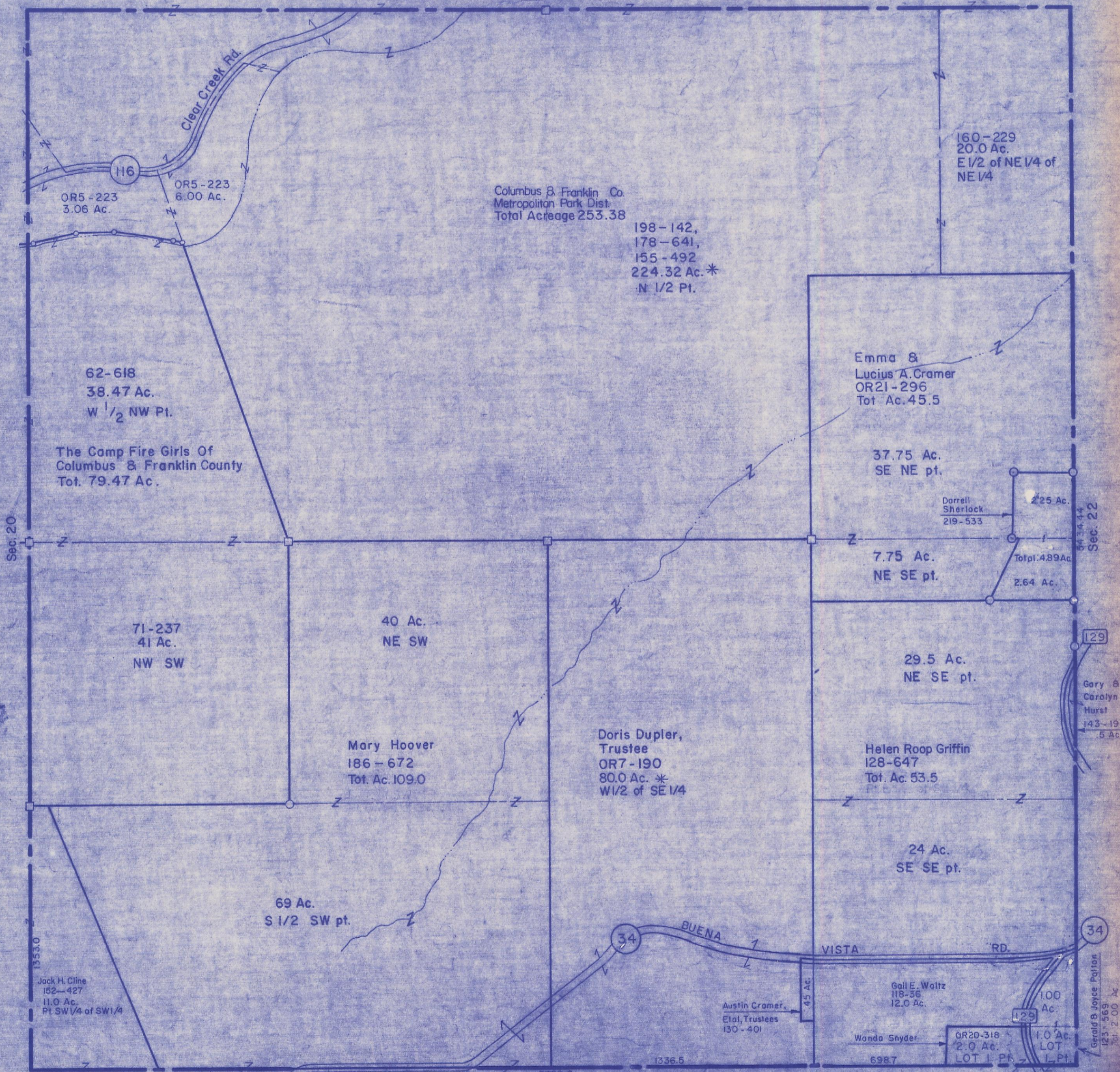
HOCKING COUNTY

Sec. 21 T13 R18

GOOD HOPE TWP.

Scale=1"=400'

Sec. 16



OR5-223  
3.06 Ac.

OR5-223  
6.00 Ac.

Columbus & Franklin Co.  
Metropolitan Park Dist.  
Total Acreage 253.38

198-142,  
178-641,  
155-492  
224.32 Ac.\*  
N 1/2 Pt.

160-229  
20.0 Ac.  
E 1/2 of NE 1/4 of  
NE 1/4

62-618  
38.47 Ac.  
W 1/2 NW Pt.

The Camp Fire Girls Of  
Columbus & Franklin County  
Tot. 79.47 Ac.

Emma &  
Lucius A. Cramer  
OR21-296  
Tot. Ac. 45.5

37.75 Ac.  
SE NE pt.

Darrell  
Sherlock  
219-533  
2.25 Ac.  
Tot. 4.89 Ac.  
2.64 Ac.

7.75 Ac.  
NE SE pt.

71-237  
41 Ac.  
NW SW

40 Ac.  
NE SW

Mary Hoover  
186-672  
Tot. Ac. 109.0

Doris Dupler,  
Trustee  
OR7-190  
80.0 Ac.\*  
W 1/2 of SE 1/4

29.5 Ac.  
NE SE pt.

Helen Roop Griffin  
128-647  
Tot. Ac. 53.5

Gary &  
Carolyn  
Hurst  
143-19  
5 Ac.

69 Ac.  
S 1/2 SW pt.

24 Ac.  
SE SE pt.

Jack H. Cline  
152-427  
11.0 Ac.  
Pt. SW 1/4 of SW 1/4

Austin Cramer,  
Etal, Trustees  
130-401

Gail E. Waltz  
118-36  
12.0 Ac.

Wanda Snyder  
OR20-318  
2.0 Ac.  
LOT 1 Pt.

100  
Ac.  
1.0 Ac.  
LOT  
1 Pt.

Gerald & Joyce Patton  
123-569  
Tot. 2.00 Ac.

5359.2  
Sec. 28

BUENA VISTA RD.

Sec. 21