

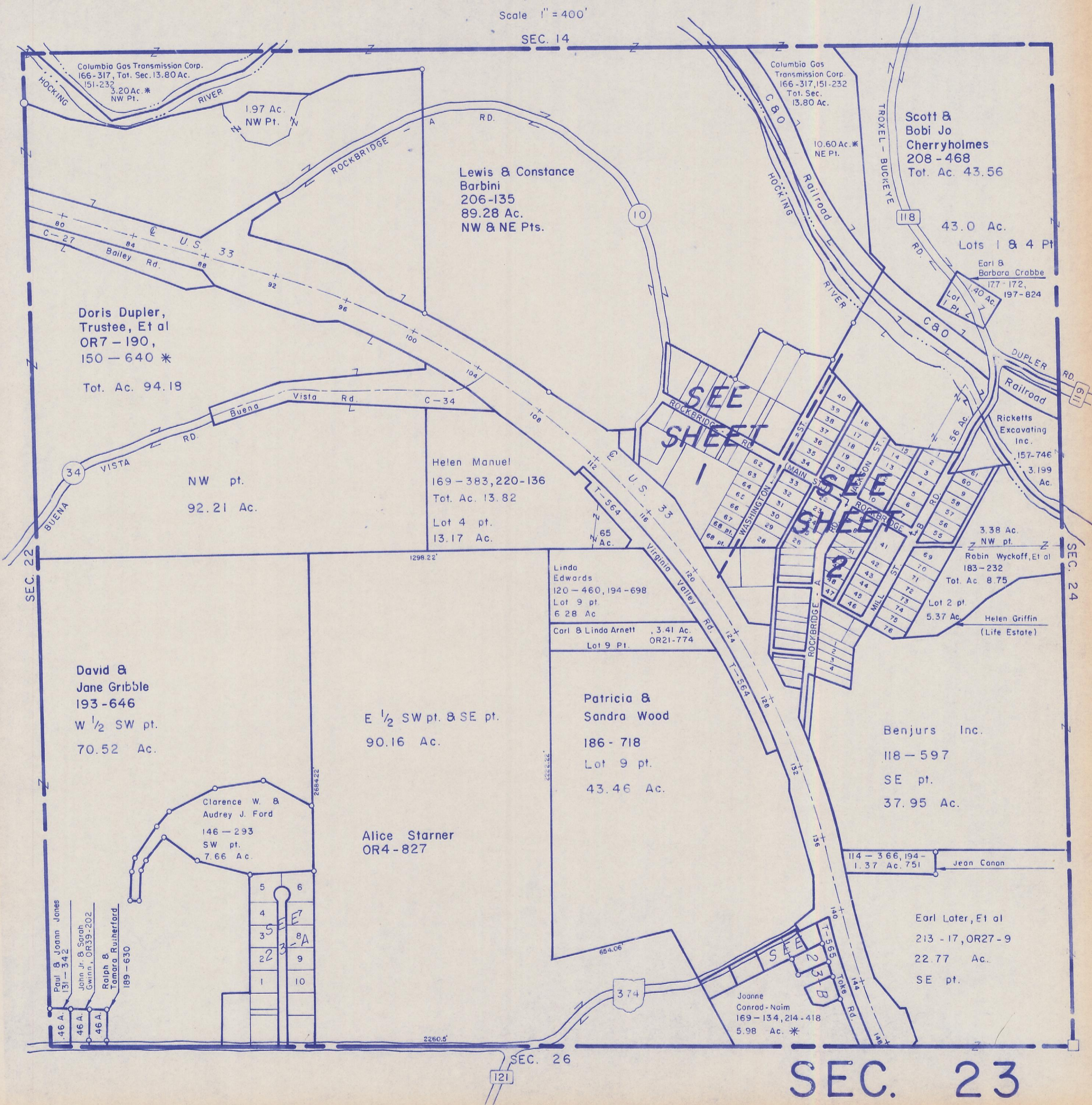
HOCKING COUNTY

GOOD HOPE

SEC. 23 T13 R18

Scale 1" = 400'

SEC. 14



Columbia Gas Transmission Corp.
166-317, Tot. Sec. 13.80 Ac.
151-233
3.20 Ac. *
NW Pt.

1.97 Ac.
NW Pt.

Columbia Gas
Transmission Corp.
166-317, 151-232
Tot. Sec.
13.80 Ac.

Scott &
Bobi Jo
Cherryholmes
208-468
Tot. Ac. 43.56

Lewis & Constance
Barbini
206-135
89.28 Ac.
NW & NE Pts.

Doris Dupler,
Trustee, Et al
OR7-190,
150-640 *
Tot. Ac. 94.18

43.0 Ac.
Lots 1 & 4 Pt
Earl &
Barbara Crabbe
177-172,
197-824
Lot 1 Pt.

NW pt.
92.21 Ac.

Helen Manuel
169-383, 220-136
Tot. Ac. 13.82
Lot 4 pt.
13.17 Ac.

SEE
SHEET
1

SEE
SHEET
2

Ricketts
Excavating
Inc.
157-746
3.199
Ac.

Linda
Edwards
120-460, 194-698
Lot 9 pt.
6.28 Ac.

Carl & Linda Arnett
3.41 Ac.
OR21-774
Lot 9 Pt.

3.38 Ac.
NW pt.
Robin Wyckoff, Et al
183-232
Tot. Ac. 8.75
Lot 2 pt.
5.37 Ac.

David &
Jane Gribble
193-646
W 1/2 SW pt.
70.52 Ac.

E 1/2 SW pt. & SE pt.
90.16 Ac.

Patricia &
Sandra Wood
186-718
Lot 9 pt.
43.46 Ac.

Benjurs Inc.
118-597
SE pt.
37.95 Ac.

Clarence W. &
Audrey J. Ford
146-293
SW pt.
7.66 Ac.

Alice Starner
OR4-827

114-366, 194-
1.37 Ac. 751
Jean Canon

Earl Later, Et al
213-17, OR27-9
22.77 Ac.
SE pt.

Paul & Joann Jones
131-342
46 A.
John Jr. & Sarah
Gwinn, OR39-202
46 A.
Ralph &
Tamara Rutherford
189-630
46 A.

Joanne
Conrad-Naim
169-134, 214-418
5.98 Ac. *

SEC. 23

SEC. 26

121