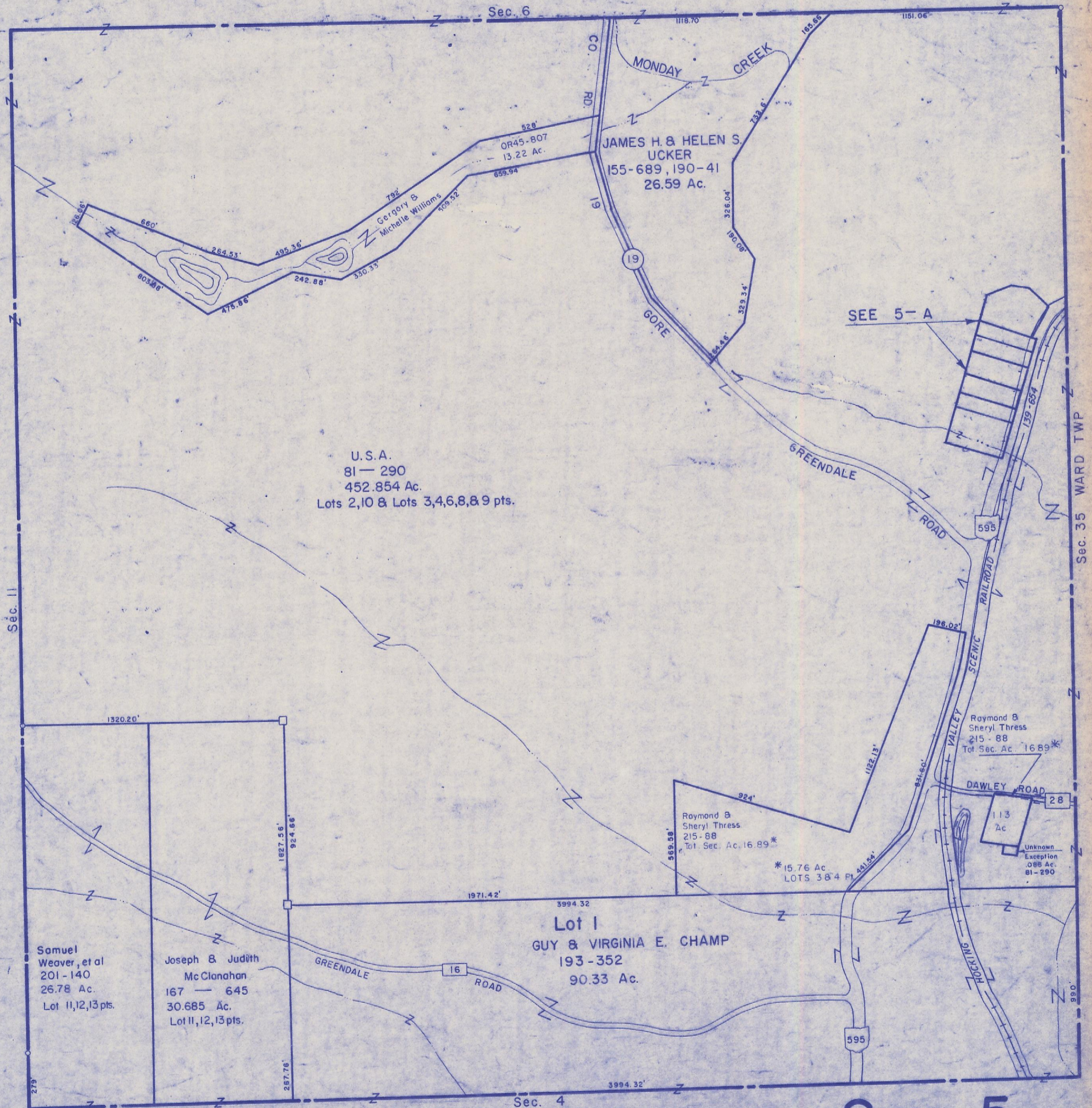


HOCKING COUNTY

Sec. 5 T13 R16

GREEN TWP.

Scale 1"=400'



U.S.A.
81 - 290
452.854 Ac.
Lots 2, 10 & Lots 3, 4, 6, 8, & 9 pts.

Samuel
Weaver, et al
201 - 140
26.78 Ac.
Lot 11, 12, 13 pts.

Joseph & Judith
McClanahan
167 - 645
30.685 Ac.
Lot 11, 12, 13 pts.

Lot 1
GUY & VIRGINIA E. CHAMP
193 - 352
90.33 Ac.

JAMES H. & HELEN S.
UCKER
155 - 689, 190 - 41
26.59 Ac.

Raymond B
Sheryl Thress
215 - 88
Tot. Sec. Ac. 16.89*

Raymond B
Sheryl Thress
215 - 88
Tot. Sec. Ac. 16.89*

113
Ac

Unknown
Exception
.088 Ac.
81 - 290

Sec. 5