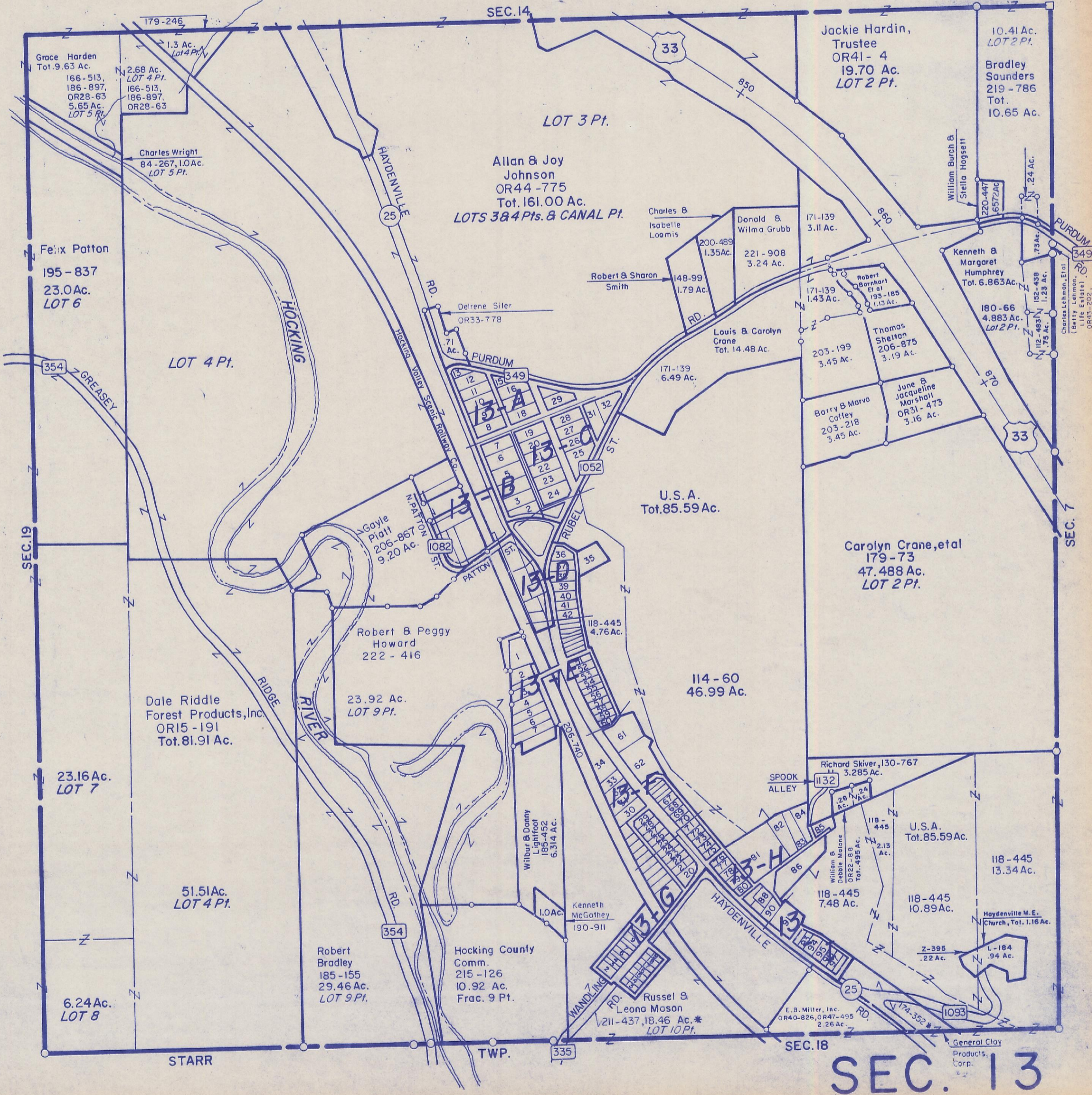


HOCKING COUNTY

GREEN TWP.

SEC. 13 T-13 R-16

Scale 1" = 400'



SEC. 13

STARR

TWP.

SEC. 18

SEC. 7

SEC. 19

SEC. 14

33

33

354

354

335

25

349

Allan & Joy
Johnson
OR44-775
Tot. 161.00 Ac.
LOTS 3 & 4 Pts. & CANAL Pt.

Jackie Hardin,
Trustee
OR41-4
19.70 Ac.
LOT 2 Pt.

10.41 Ac.
LOT 2 Pt.
Bradley
Saunders
219-786
Tot.
10.65 Ac.

Grace Harden
Tot. 9.63 Ac.
166-513,
186-897,
OR28-63
5.65 Ac.
LOT 5 Pt.

2.68 Ac.
LOT 4 Pt.
166-513,
186-897,
OR28-63

Charles Wright
84-267, 1.0 Ac.
LOT 5 Pt.

Felix Patton
195-837
23.0 Ac.
LOT 6

LOT 4 Pt.

Delrene Siler
OR33-778
71 Ac.

Robert & Sharon
Smith
148-99
1.79 Ac.

Charles &
Isabelle
Loomis
200-489
1.35 Ac.

Donald &
Wilma Grubb
221-908
3.24 Ac.

171-139
3.11 Ac.

William Burch &
Stella Hogsett
220-447
6.572 Ac.

Kenneth &
Margaret
Humphrey
Tot. 6.863 Ac.

180-66
4.883 Ac.
Lot 2 Pt.

Robert
Barnhart
193-185
1.13 Ac.

Thomas
Shelton
206-875
3.19 Ac.

203-199
3.45 Ac.

Barry & Marva
Coffey
203-218
3.45 Ac.

June &
Jacqueline
Marshall
OR31-473
3.16 Ac.

U.S.A.
Tot. 85.59 Ac.

Carolyn Crane, et al
179-73
47.488 Ac.
LOT 2 Pt.

Gayle
Platt
206-867
9.20 Ac.

Robert & Peggy
Howard
222-416

23.92 Ac.
LOT 9 Pt.

Dale Riddle
Forest Products, Inc.
OR15-191
Tot. 81.91 Ac.

23.16 Ac.
LOT 7

51.51 Ac.
LOT 4 Pt.

6.24 Ac.
LOT 8

Hocking County
Comm.
215-126
10.92 Ac.
Frac. 9 Pt.

Robert
Bradley
185-155
29.46 Ac.
LOT 9 Pt.

Wilbur & Donny
Lightfoot
185-452
6.314 Ac.

Kenneth
McGathey
190-911

Russel &
Leona Mason
211-437, 18.46 Ac.*
LOT 10 Pt.

Richard Skiver,
130-767
3.285 Ac.

SPOOK
ALLEY

118-445
7.48 Ac.

U.S.A.
Tot. 85.59 Ac.

118-445
13.34 Ac.

118-445
10.89 Ac.

Haydenville M.E.
Church, Tot. 1.16 Ac.

Z-395
.22 Ac.

E. B. Miller, Inc.
OR40-826, OR47-495
2.26 Ac.

General Clay
Products,
Corp.