

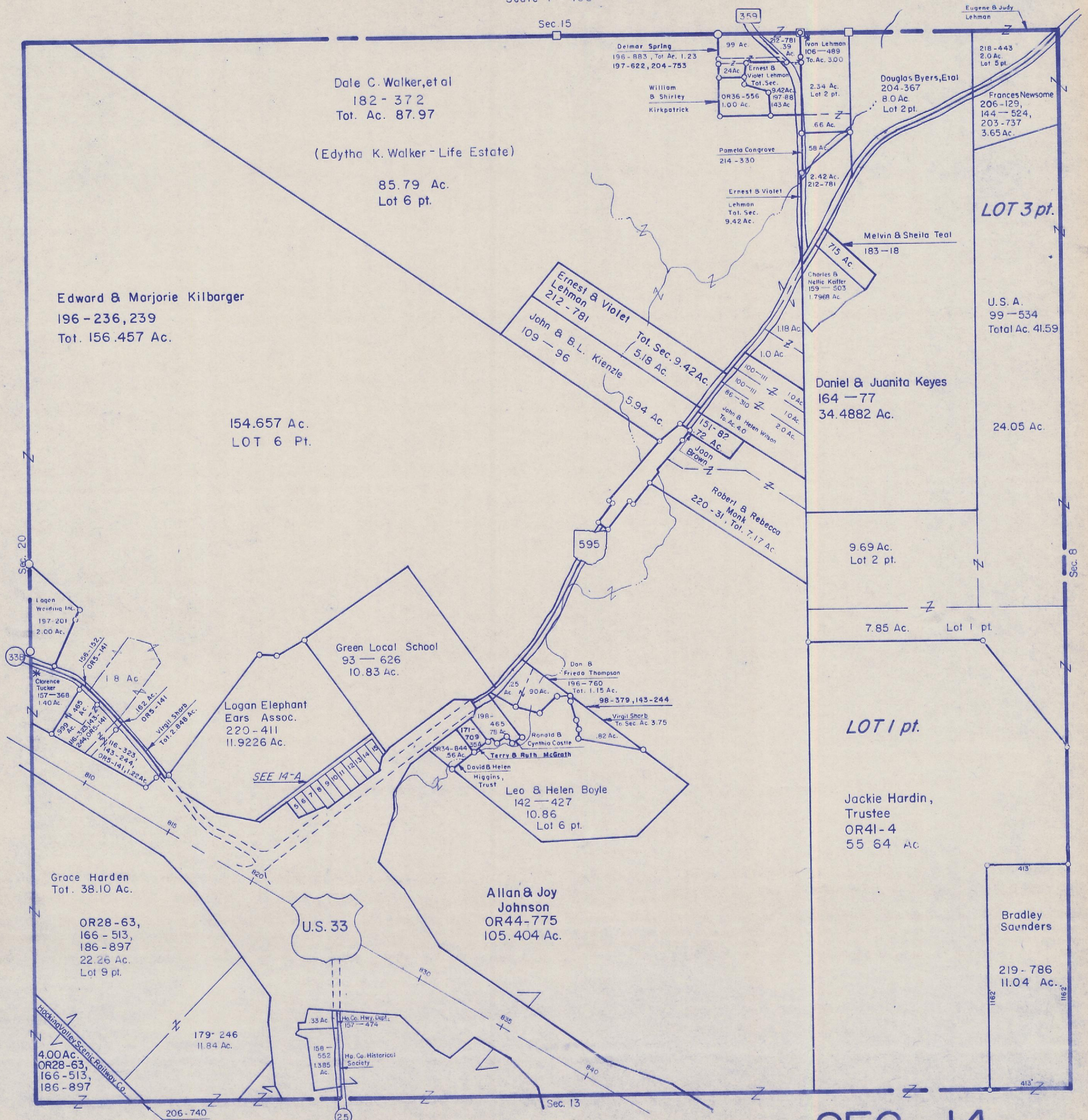
HOCKING COUNTY

GREEN TWP.

SEC. 14 T 13 R 16

Scale 1" = 400'

(14)



Dale C. Walker, et al  
182 - 372  
Tot. Ac. 87.97

(Edytha K. Walker - Life Estate)

85.79 Ac.  
Lot 6 pt.

Edward & Marjorie Kilbarger  
196 - 236, 239  
Tot. 156.457 Ac.

154.657 Ac.  
LOT 6 Pt.

Sec. 15

Delmar Spring  
196 - 883, Tot. Ac. 1.23  
197 - 622, 204 - 753

William  
B. Shirley  
Kirkpatrick

Ernest & Violet  
Lehman  
Tot. Sec.  
9.42 Ac.  
197 - 88  
143 Ac.

2.34 Ac.  
Lot 2 pt.

Douglas Byers, et al  
204 - 367  
8.0 Ac.  
Lot 2 pt.

Eugene & Judy  
Lehman

218 - 443  
2.0 Ac.  
Lot 5 pt.

Frances Newsome  
206 - 129,  
144 - 524,  
203 - 737  
3.65 Ac.

Pamela Congrove  
214 - 330

Ernest & Violet  
Lehman  
Tot. Sec.  
9.42 Ac.

2.42 Ac.  
212 - 781

Melvin & Sheila Teal  
183 - 18

LOT 3 pt.

Ernest & Violet  
Lehman  
212 - 781  
Tot. Sec. 9.42 Ac.  
5.18 Ac.

John & B.L. Kienzie  
109 - 96  
5.94 Ac.

Daniel & Juanita Keyes  
164 - 77  
34.4882 Ac.

U.S. A.  
99 - 534  
Total Ac. 41.59

24.05 Ac.

9.69 Ac.  
Lot 2 pt.

7.85 Ac. Lot 1 pt.

LOT 1 pt.

Jackie Hardin,  
Trustee  
OR41 - 4  
55.64 Ac.

Bradley  
Saunders

219 - 786  
11.04 Ac.

Green Local School  
93 - 626  
10.83 Ac.

Logan Elephant  
Ears Assoc.  
220 - 411  
11.9226 Ac.

Allan & Joy  
Johnson  
OR44 - 775  
105.404 Ac.

Grace Harden  
Tot. 38.10 Ac.

OR28 - 63,  
166 - 513,  
186 - 897  
22.26 Ac.  
Lot 9 pt.

4.00 Ac.  
OR28 - 63,  
166 - 513,  
186 - 897

179 - 246  
11.84 Ac.

U.S. 33

33 Ac.

158 -  
552  
1.385  
Ac.

Ho. Co. Hwy. Dept.  
157 - 474

Ho. Co. Historical  
Society

Sec. 13

SEC. 14

Sec. 8

Sec. 20

33B

33B

33B

33B

33B

33B

25

413

413

413

413

413

413

413

413

413

413

413

413

413

413

413

413

413

413

413

413

413

413

413

413

413

413

413

413

413

413

413

413

413

413

413

413

413

413

413

413

413

413

413

413

413

413

413

413

413

413

413

413

413

413

413

413

413

413

413

413

413

413

413

413

413

413

413

413

413

413

413

413

413

413

413

413

413

413

413

413

413

413

413

413

413

413

413

413

413

413

413

413

413

413

413

413

413

413

413

413

413

413

413

413

413

413

413

413

413

413

413

413

413

413

413

413

413

413

413

413

413

413

413

413

413

413

413

413

413

413

413

413

413

413

413

413

413

413

413

413

413

413

413

413

413

413

413

413

413

413

413

413

413

413

413

413

413

413

413

413

413

413

413

413

413

413

413

413

413

413

413

413

413

413

413

413

413

413

413

413

413

413

413

413

413

413

413

413

413

413

413

413

413

413

413

413

413

413

413

413

413

413

413

413

413

413

413

413

413

413

413

413

413

413

413

413

413