

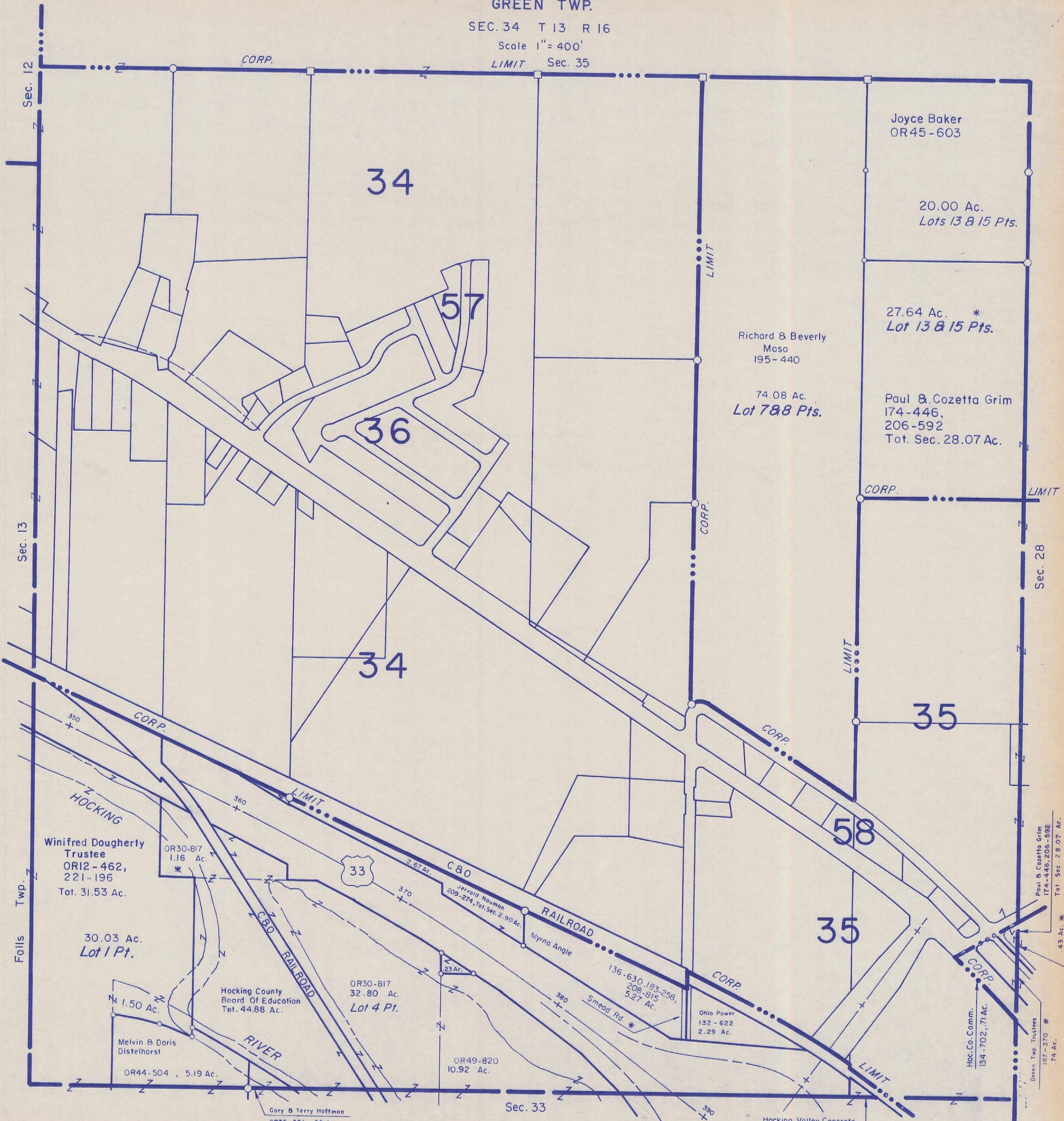
HOCKING COUNTY

GREEN TWP.

SEC. 34 T 13 R 16

Scale 1" = 400'

LIMIT Sec. 35



34

57

36

34

Joyce Baker  
OR45-603

20.00 Ac.  
Lots 13 & 15 Pts.

27.64 Ac. \*  
Lot 13 & 15 Pts.

Richard & Beverly  
Masa  
195-440

74.08 Ac.  
Lot 7 & 8 Pts.

Paul & Cozetta Grim  
174-446,  
206-592  
Tot. Sec. 28.07 Ac.

Winifred Dougherty  
Trustee  
OR12-462,  
221-196  
Tot. 31.53 Ac.

OR30-817  
1.16 Ac.  
\*

30.03 Ac.  
Lot 1 Pt.

1.50 Ac.

Melvin B Doris  
Distelhorst

OR44-504, 5.19 Ac.

Hocking County  
Board Of Education  
Tot. 44.88 Ac.

OR30-817  
32.80 Ac.  
Lot 4 Pt.

Gary B Terry Hoffman  
OR36-321, .55 Ac.

Jerrold Nauman  
209-274, Tot. Sec. 2.90 Ac.

Myrna Angle

136-630, 183-258,  
208-815  
5.27 Ac.

OR49-820  
10.92 Ac.

Ohio Power  
132-622  
2.29 Ac.

Hocking Valley Concrete  
124-386, .18 Ac.

Hoc. Co. Comm.  
134-702, .71 Ac.

Paul & Cozetta Grim  
174-446, 206-592  
Tot. Sec. 28.07 Ac.  
\*.43 Ac.

Green Twp. Trustees  
187-370 \*  
74 Ac.

SEC. 34