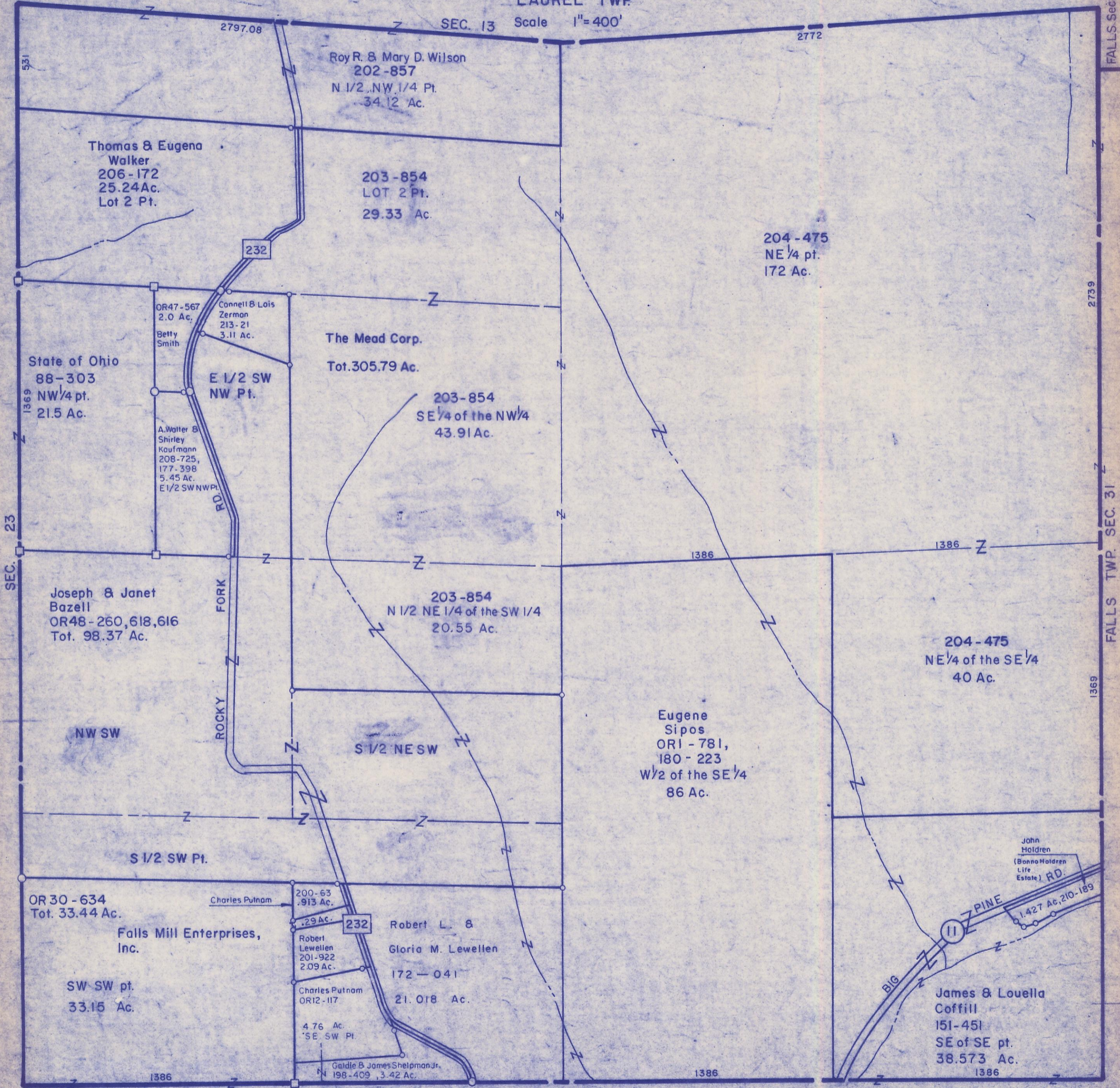


HOCKING COUNTY

Sec. 24 T12 R18

LAUREL TWP.

SEC. 13 Scale 1"=400'



Roy R. & Mary D. Wilson
202-857
N 1/2 NW 1/4 Pt.
34.12 Ac.

Thomas & Eugena
Walker
206-172
25.24 Ac.
Lot 2 Pt.

203-854
LOT 2 Pt.
29.33 Ac.

204-475
NE 1/4 pt.
172 Ac.

OR47-567
2.0 Ac.
Betty
Smith

Connell & Lois
Zerman
213-21
3.11 Ac.

The Mead Corp.
Tot. 305.79 Ac.

State of Ohio
88-303
NW 1/4 pt.
21.5 Ac.

E 1/2 SW
NW Pt.

203-854
SE 1/4 of the NW 1/4
43.91 Ac.

A. Walter B.
Shirley
Kaufmann
208-725,
177-398
5.45 Ac.
E 1/2 SW NW Pt.

Joseph & Janet
Bazell
OR48-260, 618, 616
Tot. 98.37 Ac.

203-854
N 1/2 NE 1/4 of the SW 1/4
20.55 Ac.

NW SW

S 1/2 NE SW

Eugene
Sipos
ORI-781,
180-223
W 1/2 of the SE 1/4
86 Ac.

204-475
NE 1/4 of the SE 1/4
40 Ac.

S 1/2 SW Pt.

OR 30-634
Tot. 33.44 Ac.

Charles Putnam

200-63
.913 Ac.

.29 Ac.

Robert
Lewellen
201-922
2.09 Ac.

Charles Putnam
OR12-117

4.76 Ac.
SE SW Pt.

Galdie & James Shelpman Jr.
198-409, 3.42 Ac.

Robert L. &
Gloria M. Lewellen
172-041
21.018 Ac.

SW SW pt.
33.15 Ac.

Falls Mill Enterprises,
Inc.

John
Holdren
(Bonno Holdren
Life
Estate) RD.

1.427 Ac. 210-189

James & Louella
Coffill
151-451
SE of SE pt.
38.573 Ac.

SEC. 24