

HOCKING COUNTY

SEC. 3 T.15 R.17

MARION TWP.

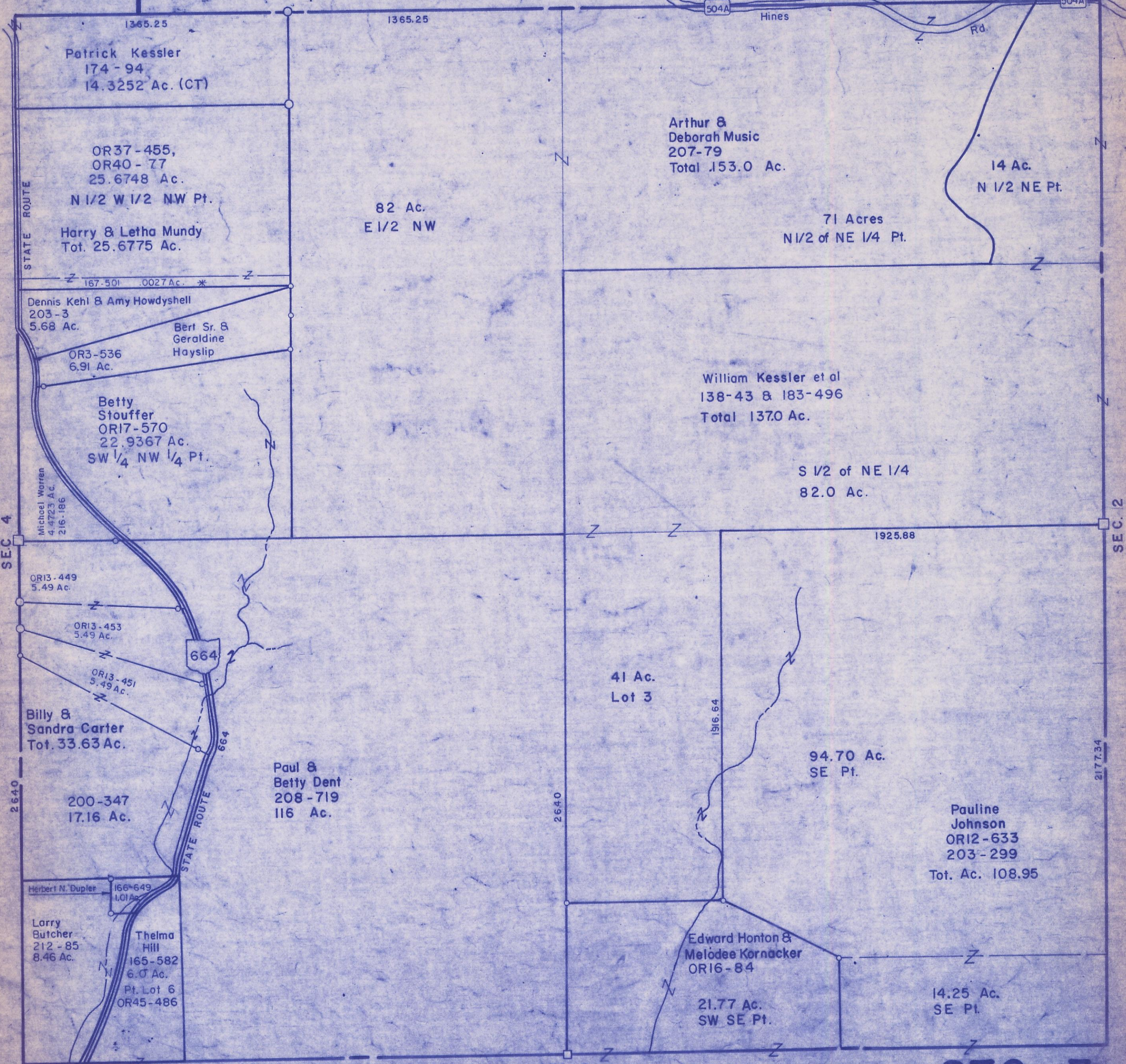
Scale 1"=400'

SEC. 33

RUSH CREEK TOWNSHIP

Fairfield County

SEC. 34



Patrick Kessler
174-94
14.3252 Ac. (CT)

OR37-455,
OR40-77
25.6748 Ac.
N 1/2 W 1/2 NW Pt.
Harry & Letha Mundy
Tot. 25.6775 Ac.

STATE ROUTE

167-501 .0027 Ac. *

Dennis Kehl & Amy Howdysell
203-3
5.68 Ac.

OR3-536
6.91 Ac.

Bert Sr. &
Geraldine
Hayslip

Betty
Stouffer
OR17-570
22.9367 Ac.
SW 1/4 NW 1/4 Pt.

Michael Warren
4-723 Ac.
216-186

OR13-449
5.49 Ac.

OR13-453
5.49 Ac.

OR13-451
5.49 Ac.

Billy &
Sandra Carter
Tot. 33.63 Ac.

200-347
17.16 Ac.

Herbert N. Dupler
166-649
1.01 Ac.

Larry
Butcher
212-85
8.46 Ac.

Thelma
Hill
165-582
6.0 Ac.
Pt. Lot 6
OR45-486

82 Ac.
E 1/2 NW

Arthur &
Deborah Music
207-79
Total 153.0 Ac.

71 Acres
N 1/2 of NE 1/4 Pt.

14 Ac.
N 1/2 NE Pt.

William Kessler et al
138-43 & 183-496
Total 1370 Ac.

S 1/2 of NE 1/4
82.0 Ac.

1925.88

41 Ac.
Lot 3

1316.64

94.70 Ac.
SE Pt.

Pauline
Johnson
OR12-633
203-299
Tot. Ac. 108.95

Edward Honton &
Melodee Kornacker
OR16-84

21.77 Ac.
SW SE Pt.

14.25 Ac.
SE Pt.

SEC. 10

SEC 3