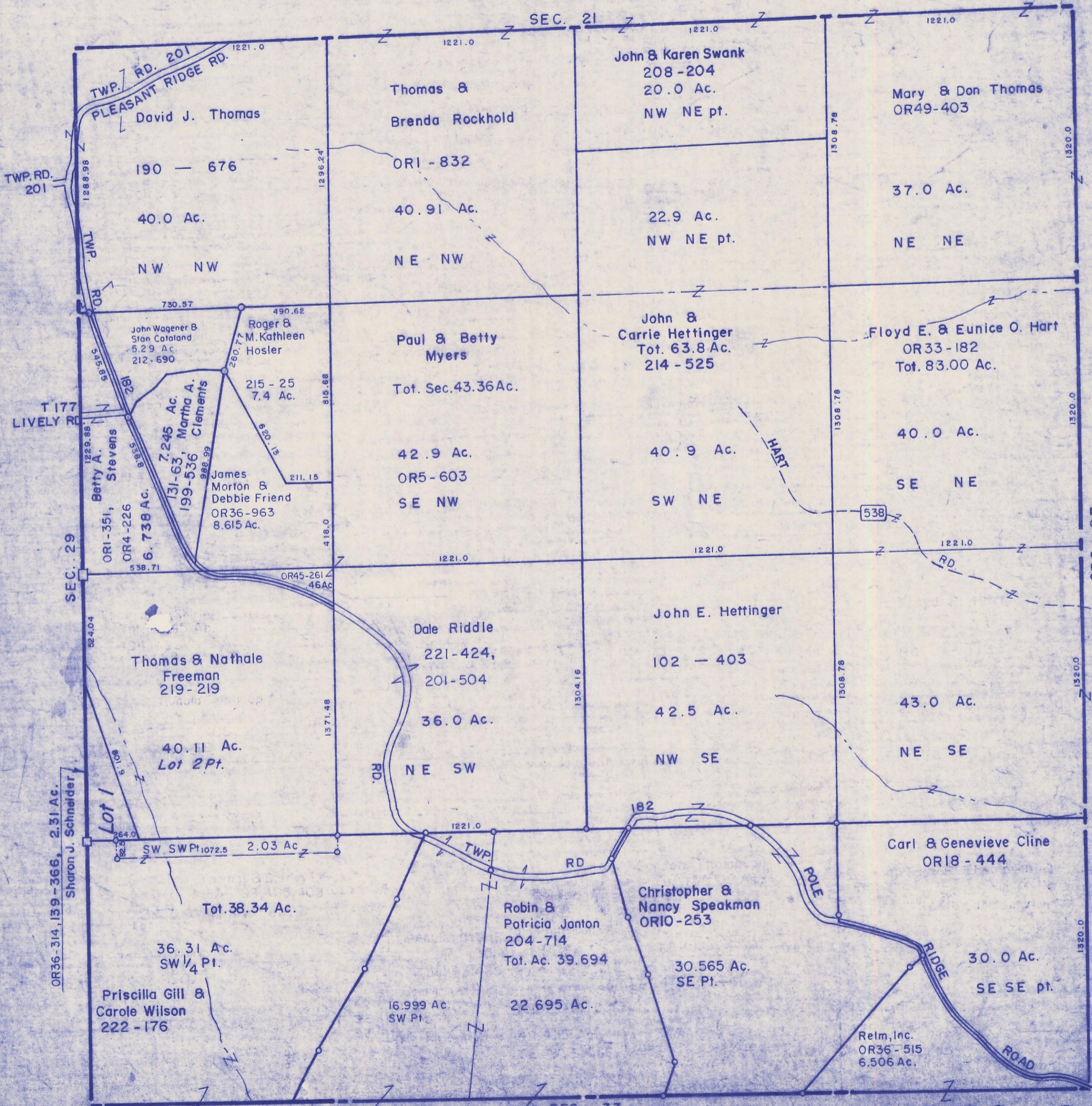


HOCKING COUNTY

Sec. 28 T11 R19

SALT CREEK TWP.

Scale 1" = 400'



SEC. 21

John & Karen Swank
208-204
20.0 Ac.
NW NE pt.

Mary & Don Thomas
OR49-403
37.0 Ac.
NE NE

Thomas & Brenda Rockhold
ORI-832
40.91 Ac.
NE NW

John & Carrie Hettinger
Tot. 63.8 Ac.
214-525
40.9 Ac.
SW NE

Floyd E. & Eunice O. Hart
OR33-182
Tot. 83.00 Ac.
40.0 Ac.
SE NE

Paul & Betty Myers
Tot. Sec. 43.36 Ac.
42.9 Ac.
OR5-603
SE NW

John E. Hettinger
102-403
42.5 Ac.
NW SE

John Wagener & Stan Cataland
5.29 Ac.
212-690

Roger & M. Kathleen Hosler
215-25
7.4 Ac.

James Morton & Debbie Friend
OR36-963
8.615 Ac.

Dale Riddle
221-424,
201-504
36.0 Ac.
NE SW

John E. Hettinger
102-403
42.5 Ac.
NW SE

Carl & Genevieve Cline
OR18-444
30.0 Ac.
SE SE pt.

Relm, Inc.
OR36-515
6.506 Ac.

David J. Thomas
190-676
40.0 Ac.
NW NW

John & Betty A. Stevens
ORI-351,
OR4-226
6.738 Ac.

Martha A. Clements
7.245 Ac.
131-63,
199-536

Thomas & Nathale Freeman
219-219
40.11 Ac.
Lot 2 Pt.

Sharon J. Schneider
OR36-314, 139-366,
2.31 Ac.

Priscilla Gill & Carole Wilson
222-176
36.31 Ac.
SW 1/4 Pt.

Robin & Patricia Janton
204-714
Tot. Ac. 39.694
22.695 Ac.
SW Pt.

Christopher & Nancy Speakman
OR10-253
30.565 Ac.
SE Pt.

SEC. 27

SEC. 33

SEC. 28