

HOCKING COUNTY

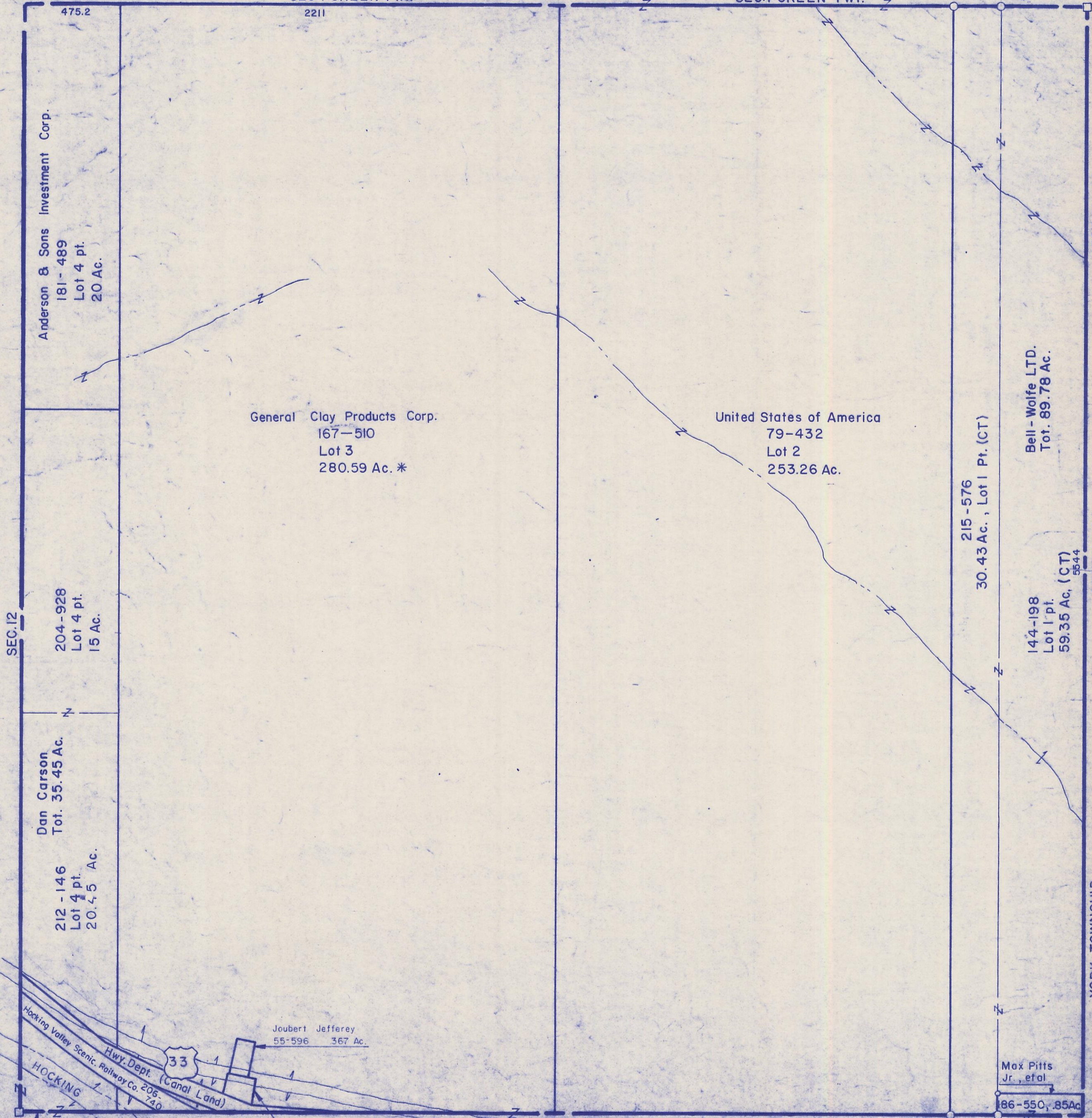
Sec. 6 T 12 R 16

STARR TWP.

Scale: 1" = 400'

SEC. 1 GREEN TWP.

SEC. 1 GREEN TWP.



Anderson & Sons Investment Corp.  
181-489  
Lot 4 pt.  
20 Ac.

General Clay Products Corp.  
167-510  
Lot 3  
280.59 Ac. \*

United States of America  
79-432  
Lot 2  
253.26 Ac.

Bell-Wolfe LTD.  
Tot. 89.78 Ac.

SEC. 12

204-928  
Lot 4 pt.  
15 Ac.

Dan Carson  
Tot. 35.45 Ac.

212-146  
Lot 4 pt.  
20.55 Ac.

215-576  
30.43 Ac., Lot 1 Pt. (CT)

144-198  
Lot 1 pt.  
59.35 Ac. (CT)  
5544

SECTION 36

ATHENS CO.

YORK TOWNSHIP

Joubert Jefferey  
55-596 367 Ac.

OR32-763, Madeline Kepple  
87-612 333 Ac. \*

John & Marian Tansky  
OR9-397  
4.00 Ac.

Max Pitts Jr., et al  
186-550, 85Ac

SEC. 5

SEC. 6