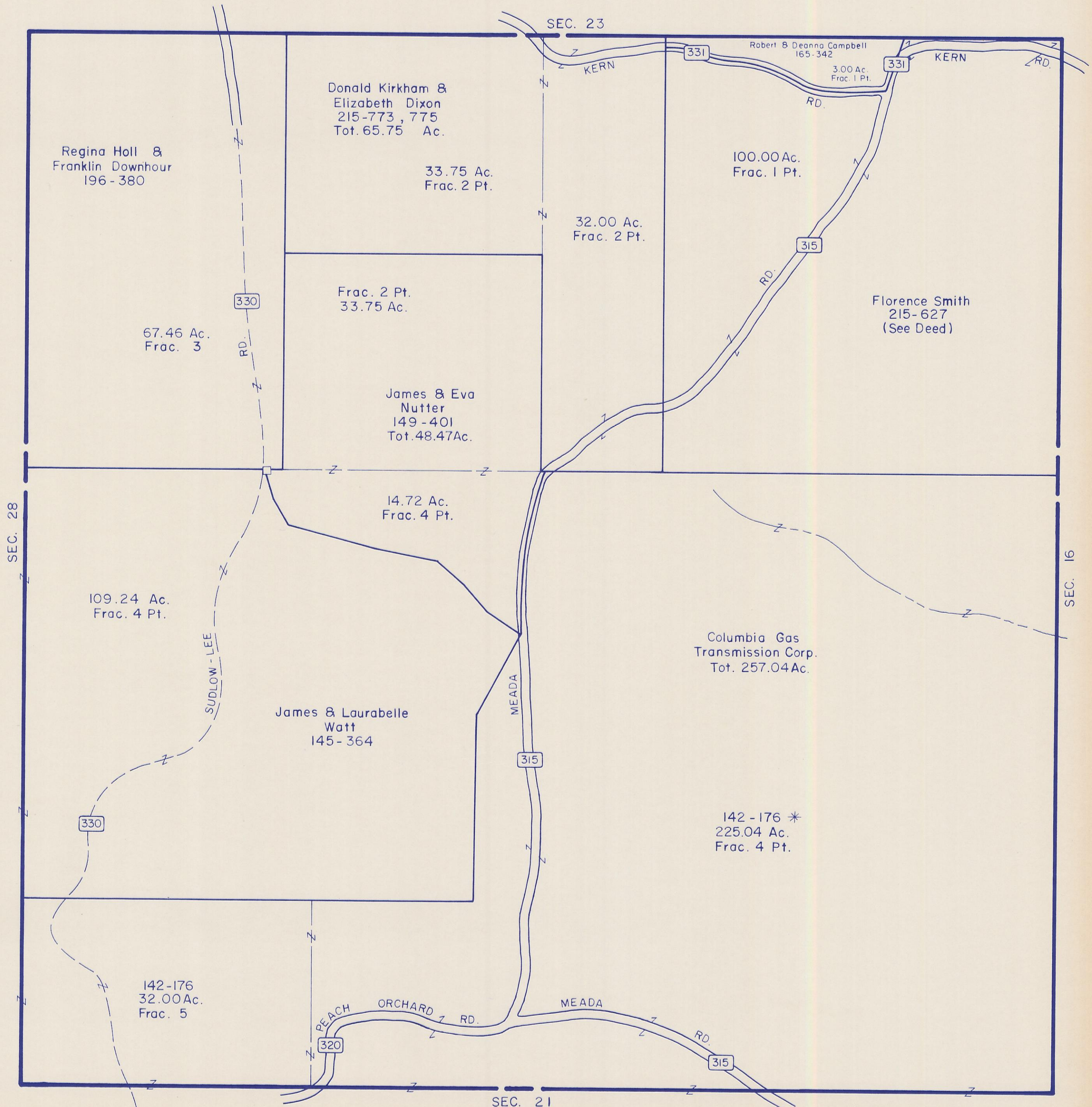


HOCKING COUNTY

STARR TWP.

SEC. 22 T12 R16

Scale 1" = 400'



Regina Holl & Franklin Downhour
196 - 380

Donald Kirkham & Elizabeth Dixon
215-773, 775
Tot. 65.75 Ac.

Robert & Deanna Campbell
165-342
3.00 Ac.
Frac. 1 Pt.

33.75 Ac.
Frac. 2 Pt.

100.00 Ac.
Frac. 1 Pt.

Florence Smith
215-627
(See Deed)

67.46 Ac.
Frac. 3

Frac. 2 Pt.
33.75 Ac.

James & Eva Nutter
149-401
Tot. 48.47 Ac.

14.72 Ac.
Frac. 4 Pt.

Columbia Gas Transmission Corp.
Tot. 257.04 Ac.

109.24 Ac.
Frac. 4 Pt.

James & Laurabelle Watt
145-364

142-176 *
225.04 Ac.
Frac. 4 Pt.

142-176
32.00 Ac.
Frac. 5

SEC. 22