

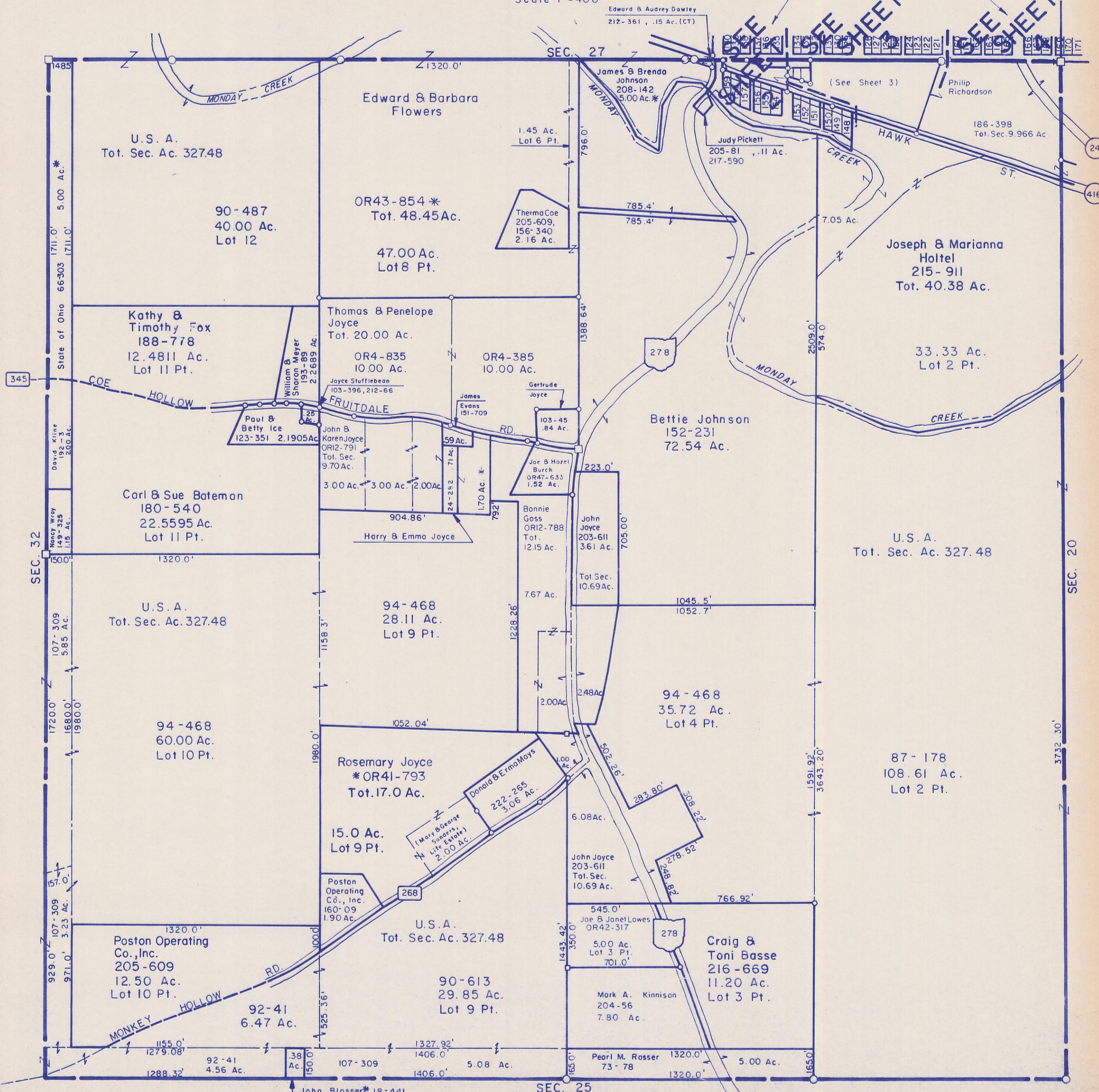
HOCKING COUNTY

WARD TWP.

SEC. 26 T-13 R-15

Scale 1"=400'

CARBONHILL



1485
1711.0' 5.00 Ac.*
1711.0'
66303
State of Ohio
345
COE HOLLOW
David Kline 192-31 2.00 Ac.
Nancy Wray 149-325 1.15 Ac.
1500'
107-309 5.85 Ac.
1720.0'
1680.0'
1980.0'

U.S. A. Tot. Sec. Ac. 327.48
90-487 40.00 Ac. Lot 12
Kathy & Timothy Fox 188-778 12.4811 Ac. Lot 11 Pt.
Carl & Sue Bateman 180-540 22.5595 Ac. Lot 11 Pt.
U.S. A. Tot. Sec. Ac. 327.48
94-468 60.00 Ac. Lot 10 Pt.
94-468 28.11 Ac. Lot 9 Pt.
94-468 35.72 Ac. Lot 4 Pt.
92-41 6.47 Ac.
Poston Operating Co., Inc. 205-609 12.50 Ac. Lot 10 Pt.
92-41 4.56 Ac.
1155.0'
1279.08'
1288.32'

Edward & Barbara Flowers 47.00 Ac. Lot 8 Pt.
OR43-854* Tot. 48.45 Ac.
Thomas & Penelope Joyce Tot. 20.00 Ac.
OR4-835 10.00 Ac.
OR4-385 10.00 Ac.
Joyce Stufflebean 103-396, 212-66
John & Karen Joyce OR12-791 Tot. Sec. 9.70 Ac.
3.00 Ac. 3.00 Ac. 2.00 Ac.
904.86'
Harry & Emma Joyce
1158.3'
1980.0'
1000.0'
1320.0'
1327.92'
1406.0'
1406.0'
5.08 Ac.
John Blosser* 18-441 Lot 1 Pt.

Edward B. Audrey Dawley 212-361, .15 Ac. (CT)
James & Brenda Johnson 208-142 5.00 Ac.*
1.45 Ac. Lot 6 Pt.
Therma Coe 205-609, 156-340 2.16 Ac.
796.0'
785.4'
785.4'
7.05 Ac.
Judy Pickett 205-81, .11 Ac. 217-590
HAWK CREEK
Philip Richardson 186-398 Tot. Sec. 9.966 Ac.
Joseph & Marianna Holtel 215-911 Tot. 40.38 Ac.
33.33 Ac. Lot 2 Pt.
Bettie Johnson 152-231 72.54 Ac.
Joe B. Hazel Burch OR47-633 1.52 Ac.
Bonnie Goss OR12-788 Tot. 12.15 Ac.
John Joyce 203-611 3.61 Ac.
705.00'
7.67 Ac.
1045.5'
1052.7'
2.00 Ac.
2.48 Ac.
1228.36'
1223.0'
792'
1.70 Ac.*
103-45 .84 Ac.
Gertrude Joyce
103-45 .84 Ac.
103-45 .84 Ac.
223.0'
705.00'
2.00 Ac.
2.48 Ac.
1228.36'
1052.04'
502.26'
283.80'
308.22'
228.82'
228.82'
6.08 Ac.
John Joyce 203-611 Tot. Sec. 10.69 Ac.
545.0'
Joe B. Janet Lowes OR42-317
5.00 Ac. Lot 3 Pt. 701.0'
Craig & Toni Basse 216-669 11.20 Ac. Lot 3 Pt.
Mark A. Kinnison 204-56 7.80 Ac.
1443.42'
350.0'
145.0'

U.S. A. Tot. Sec. Ac. 327.48
87-178 108.61 Ac. Lot 2 Pt.
1591.92'
3643.20'
3732.30'
SEC. 20

SEC. 26