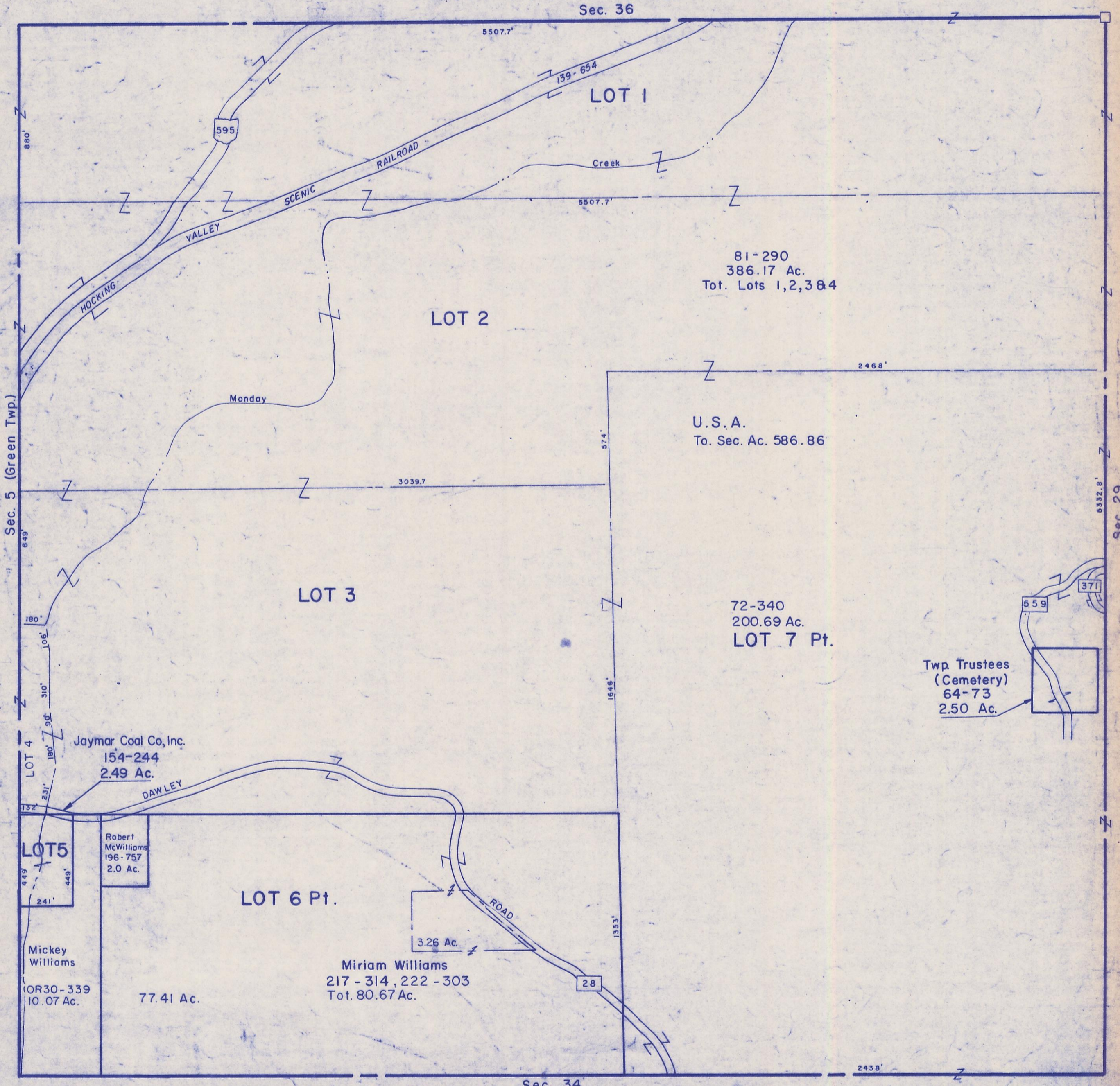


HOCKING COUNTY

Sec. 35 T13 R15

WARD TWP

Scale 1" = 400'



Sec. 36

5507.7'

139-654

LOT 1

Creek

5507.7'

81-290
386.17 Ac.
Tot. Lots 1,2,3 & 4

LOT 2

2468'

U.S.A.
To. Sec. Ac. 586.86

3039.7

LOT 3

72-340
200.69 Ac.
LOT 7 Pt.

Twp. Trustees
(Cemetery)
64-73
2.50 Ac.

Jaymar Coal Co., Inc.
154-244
2.49 Ac.

Robert
McWilliams
196-757
2.0 Ac.

LOT 5

Mickey
Williams
OR30-339
10.07 Ac.

LOT 6 Pt.

77.41 Ac.

Miriam Williams
217-314, 222-303
Tot. 80.67 Ac.

3.26 Ac.

28

Sec. 34

2438'

Sec. 35