

4-5-00

HOCKING COUNTY

FALLS GORE

SEC. 26 T 14 R 16

HAMLINVILLE
(NOW GORE)

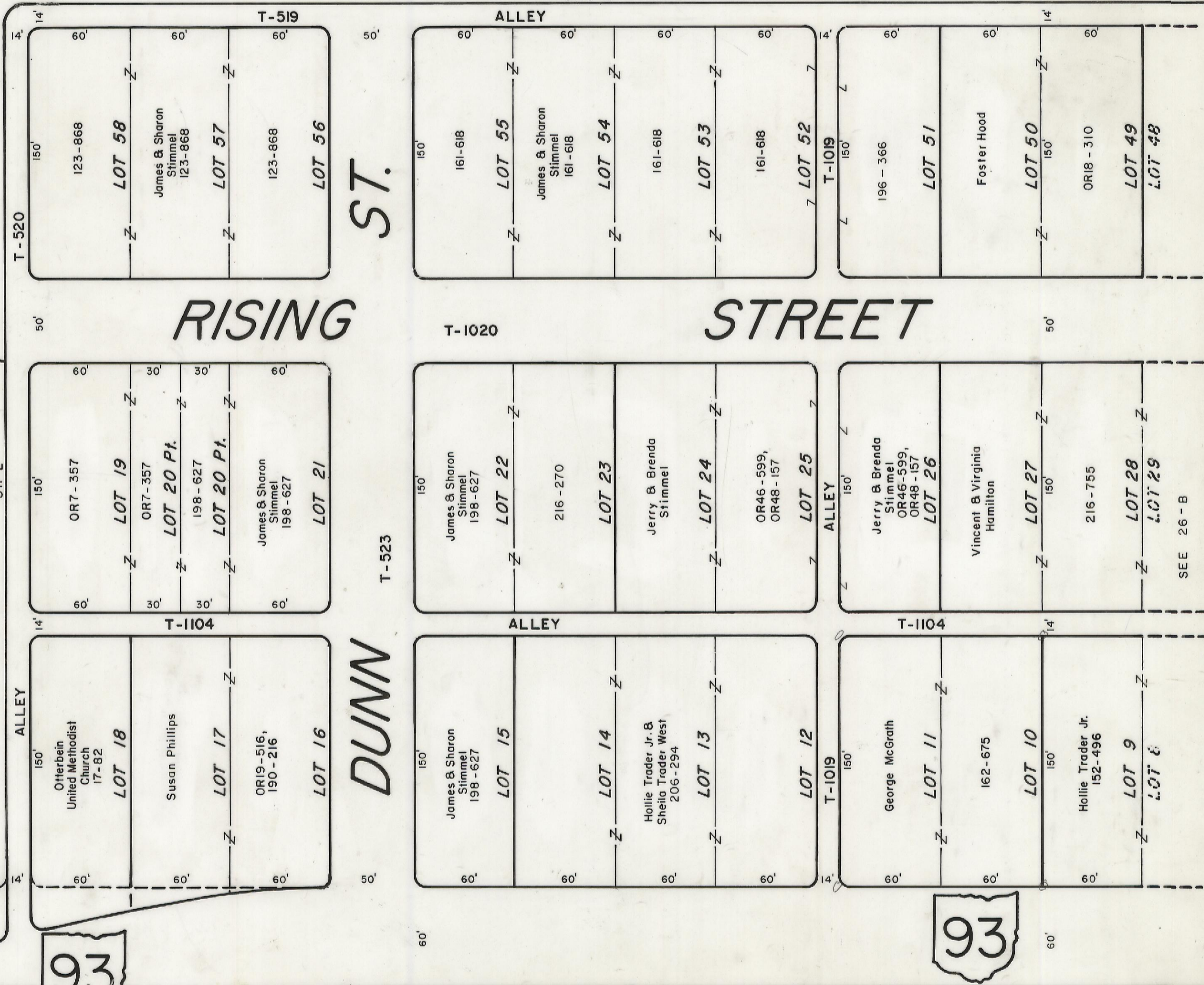
26 - A

U.S.A.



U.S.A.

S 79° W



S 11° E

T-523

DUNN

SEE 26 - B



N 79° E

U.S.A.

U.S.A.

(NOW GORE)

HAMLINVILLE 26-A