

HOCKING COUNTY

FALLS GORE TWP.

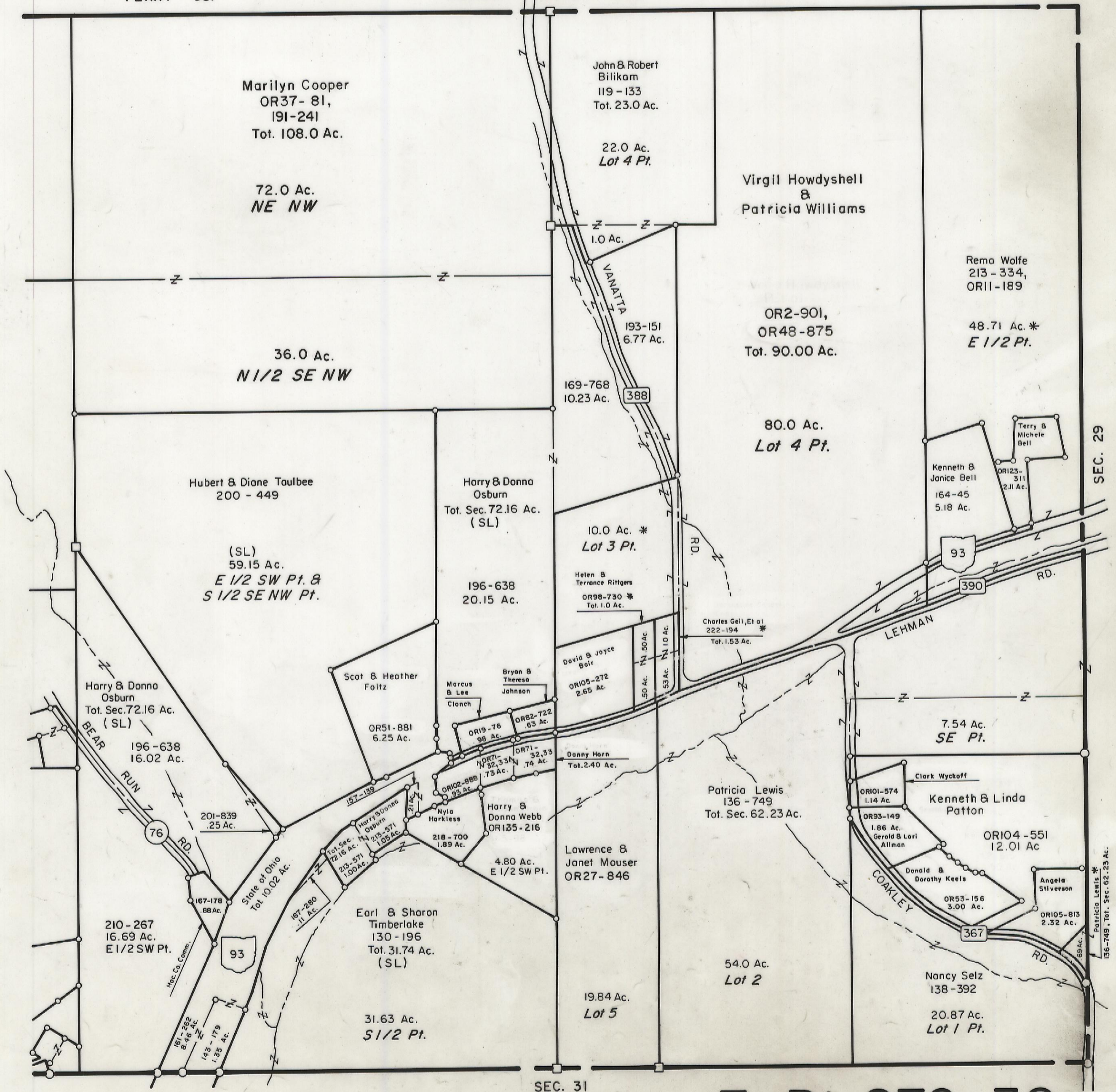
E Pt. SEC. 30 T 14 R 16

Scale 1" = 400'

PERRY CO.

MONDAY CREEK TWP.

SEC. 19



Marilyn Cooper
OR37- 81,
191-241
Tot. 108.0 Ac.

72.0 Ac.
NE NW

36.0 Ac.
N 1/2 SE NW

Hubert & Diane Taulbee
200 - 449

(SL)
59.15 Ac.
E 1/2 SW Pt. &
S 1/2 SE NW Pt.

Harry & Donna
Osburn
Tot. Sec. 72.16 Ac.
(SL)

196-638
16.02 Ac.

210-267
16.69 Ac.
E 1/2 SW Pt.

Scot & Heather
Foltz
OR51-881
6.25 Ac.

Marcus
& Lee
Clonch
OR19-76
98 Ac.

Bryan &
Theresa
Johnson
OR82-722
63 Ac.

David & Joyce
Bohr
OR105-272
2.65 Ac.

Helen &
Terrance Rittgers
OR98-730 *
Tot. 1.0 Ac.

Charles Geil, Et al
222-194 *
Tot. 1.53 Ac.

Harry & Donna
Osburn
Tot. Sec. 72.16 Ac.
(SL)

196-638
20.15 Ac.

10.0 Ac. *
Lot 3 Pt.

169-768
10.23 Ac.

John & Robert
Bilikom
119 - 133
Tot. 23.0 Ac.

22.0 Ac.
Lot 4 Pt.

Virgil Howdysheill
&
Patricia Williams

OR2-901,
OR48-875
Tot. 90.00 Ac.

80.0 Ac.
Lot 4 Pt.

Remo Wolfe
213 - 334,
OR11-189

48.71 Ac. *
E 1/2 Pt.

Kenneth &
Janice Bell
164-45
5.18 Ac.

Terry &
Michele
Bell
OR123-
311
2.11 Ac.

7.54 Ac.
SE Pt.

OR101-574
1.14 Ac.

Kenneth & Linda
Patton

OR104-551
12.01 Ac.

OR93-149
1.86 Ac.

Gerold & Lori
Allman

OR53-156
3.00 Ac.

Angela
Silverson
OR105-813
2.32 Ac.

Patricia Lewis
136 - 749
Tot. Sec. 62.23 Ac.

Lawrence &
Janet Mouser
OR27-846

Harry &
Donna Webb
OR135-216

4.80 Ac.
E 1/2 SW Pt.

Earl & Sharon
Timberlake
130 - 196
Tot. 31.74 Ac.
(SL)

31.63 Ac.
S 1/2 Pt.

19.84 Ac.
Lot 5

54.0 Ac.
Lot 2

Nancy Selz
138 - 392

20.87 Ac.
Lot 1 Pt.

SEC. 31

E Pt. SEC. 30

SEC. 29

Patricia Lewis *
136-749, Tot. Sec. 62.23 Ac.