

4-5-00

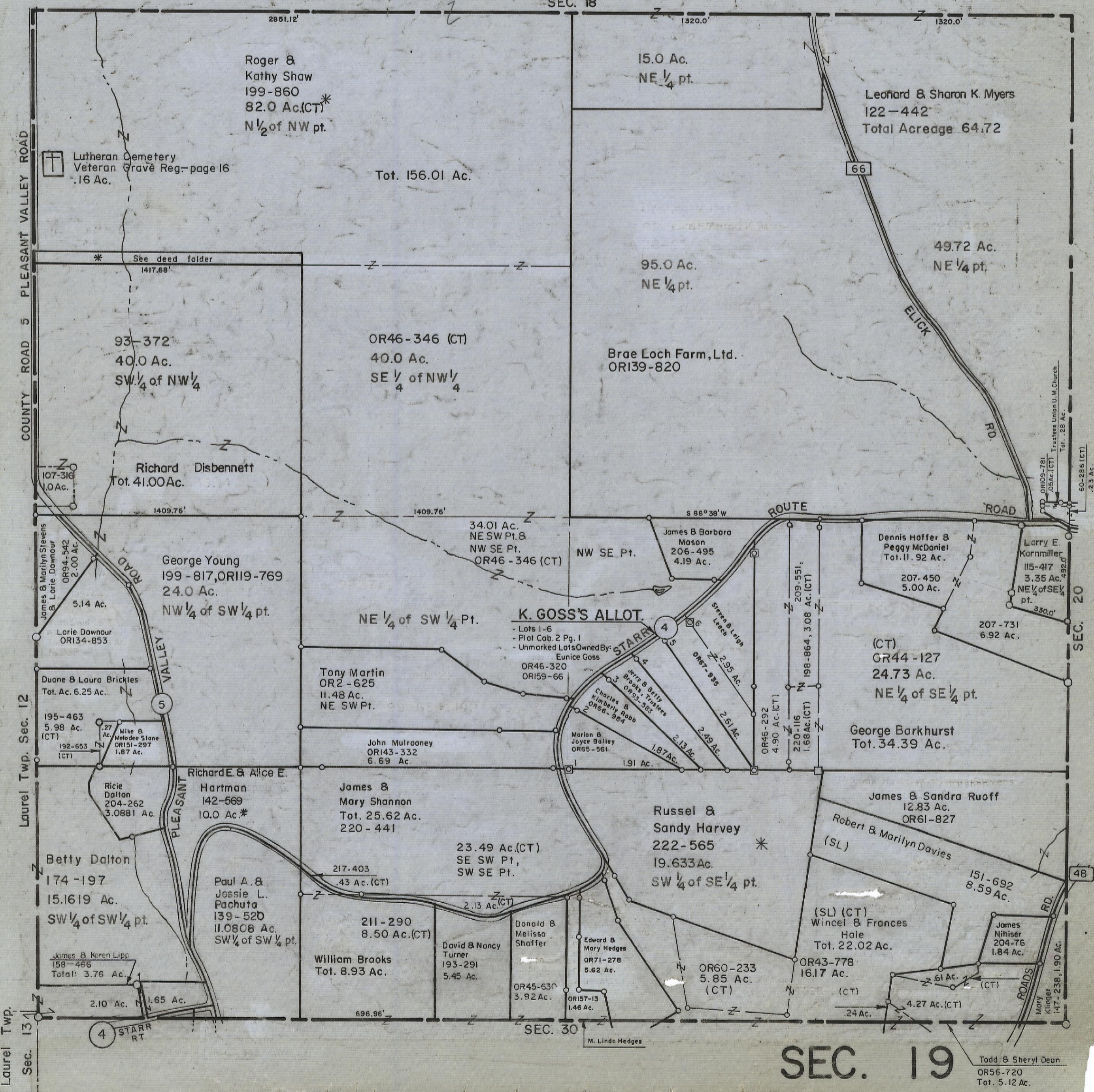
# HOCKING COUNTY

Sec. 19 T.14 R.17

FALLS TWP.

Scale 1" = 400'

SEC. 18



Roger & Kathy Shaw  
199-860  
82.0 Ac.(CT)\*  
N 1/2 of NW pt.

Tot. 156.01 Ac.

15.0 Ac.  
NE 1/4 pt.

Leonard & Sharon K. Myers  
122-442  
Total Acreage 64.72

95.0 Ac.  
NE 1/4 pt.

Brae Loch Farm, Ltd.  
OR139-820

49.72 Ac.  
NE 1/4 pt.

93-372  
40.0 Ac.  
SW 1/4 of NW 1/4

OR46-346 (CT)  
40.0 Ac.  
SE 1/4 of NW 1/4

Richard Disbennett  
Tot. 41.00 Ac.

George Young  
199-817, OR119-769  
24.0 Ac.  
NW 1/4 of SW 1/4 pt.

34.01 Ac.  
NE SW Pt. 8  
NW SE Pt.  
OR46-346 (CT)

NW SE Pt.

James & Barbara Mason  
206-495  
4.19 Ac.

Dennis Hoffer & Peggy McDaniel  
Tot. 11.92 Ac.

Larry E. Kornmiller  
115-417  
3.35 Ac.  
NE 1/4 of SE 1/4 pt.

207-731  
6.92 Ac.

(CT)  
OR44-127  
24.73 Ac.  
NE 1/4 of SE 1/4 pt.

George Barkhurst  
Tot. 34.39 Ac.

K. GOSS'S ALLOT.

- Lots 1-6
- Plat Cob. 2 Pg. 1
- Unmarked Lots Owned By:

Eunice Goss  
OR46-320  
OR159-66

Tony Martin  
OR2-625  
11.48 Ac.  
NE SW Pt.

John Mulrooney  
OR143-332  
6.69 Ac.

James & Mary Shannon  
Tot. 25.62 Ac.  
220-441

23.49 Ac.(CT)  
SE SW Pt.,  
SW SE Pt.

Russel & Sandy Harvey  
222-565  
19.633 Ac.  
SW 1/4 of SE 1/4 pt.

James & Sandra Ruoff  
12.83 Ac.  
OR61-827

Robert & Marilyn Davies  
(SL)  
151-692  
8.59 Ac.

(SL) (CT)  
Wincel & Frances Hale  
Tot. 22.02 Ac.

James Nihiser  
204-76  
1.84 Ac.

William Brooks  
Tot. 8.93 Ac.

David & Nancy Turner  
193-291  
5.45 Ac.

OR45-630  
3.92 Ac.

OR157-13  
1.46 Ac.

OR60-233  
5.85 Ac.  
(CT)

OR43-778  
16.17 Ac.  
(CT)

24 Ac.

4.27 Ac.(CT)

Todd & Sheryl Dean  
OR56-720  
Tot. 5.12 Ac.

# SEC. 19