

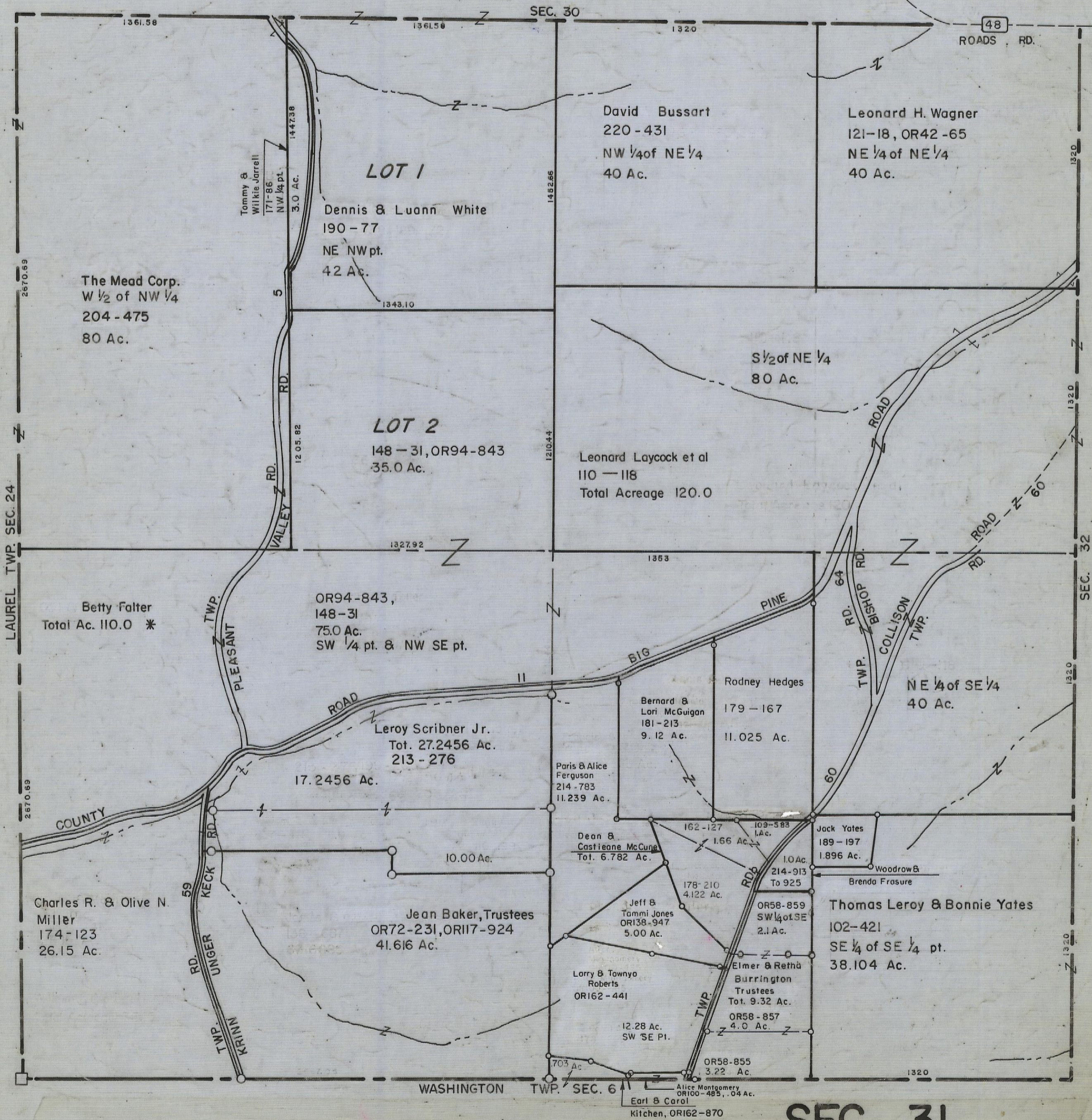
4-5-00

# HOCKING COUNTY

Sec. 31 T.14 R.17

FALLS TWP

Scale 1"=400'



LAUREL TWP. SEC. 24

SEC. 30

SEC. 32

WASHINGTON TWP. SEC. 6

# SEC. 31

The Mead Corp.  
W 1/2 of NW 1/4  
204 - 475  
80 Ac.

### LOT 1

Dennis & Luann White  
190 - 77  
NE NW pt.  
42 Ac.

### LOT 2

148 - 31, OR94-843  
35.0 Ac.

David Bussart  
220 - 431  
NW 1/4 of NE 1/4  
40 Ac.

Leonard H. Wagner  
121-18, OR42-65  
NE 1/4 of NE 1/4  
40 Ac.

Leonard Laycock et al  
110 - 118  
Total Acreage 120.0

S 1/2 of NE 1/4  
80 Ac.

Betty Falter  
Total Ac. 110.0 \*

OR94-843,  
148-31  
75.0 Ac.  
SW 1/4 pt. & NW SE pt.

Leroy Scribner Jr.  
Tot. 27.2456 Ac.  
213 - 276

17.2456 Ac.

Bernard & Lori McGuigan  
181-213  
9.12 Ac.

Rodney Hedges  
179 - 167  
11.025 Ac.

NE 1/4 of SE 1/4  
40 Ac.

Paris & Alice Ferguson  
214 - 783  
11.239 Ac.

Dean & Castieane McCune  
Tot. 6.782 Ac.

162-127  
1.66 Ac.

109-583  
1.0 Ac.

Jack Yates  
189 - 197  
1.896 Ac.

Charles R. & Olive N. Miller  
174-123  
26.15 Ac.

Jean Baker, Trustees  
OR72-231, OR117-924  
41.616 Ac.

Jeff & Tammi Jones  
OR138-947  
5.00 Ac.

Larry & Townyo Roberts  
OR162-441

12.28 Ac.  
SW SE Pt.

Elmer & Retha Burrington  
Trustees  
Tot. 9.32 Ac.  
OR58-857  
4.0 Ac.

Thomas Leroy & Bonnie Yates  
102-421  
SE 1/4 of SE 1/4 pt.  
38.104 Ac.

Alice Montgomery  
OR100-485, .04 Ac.  
Earl & Carol  
Kitchen, OR162-870

OR58-855  
3.22 Ac.