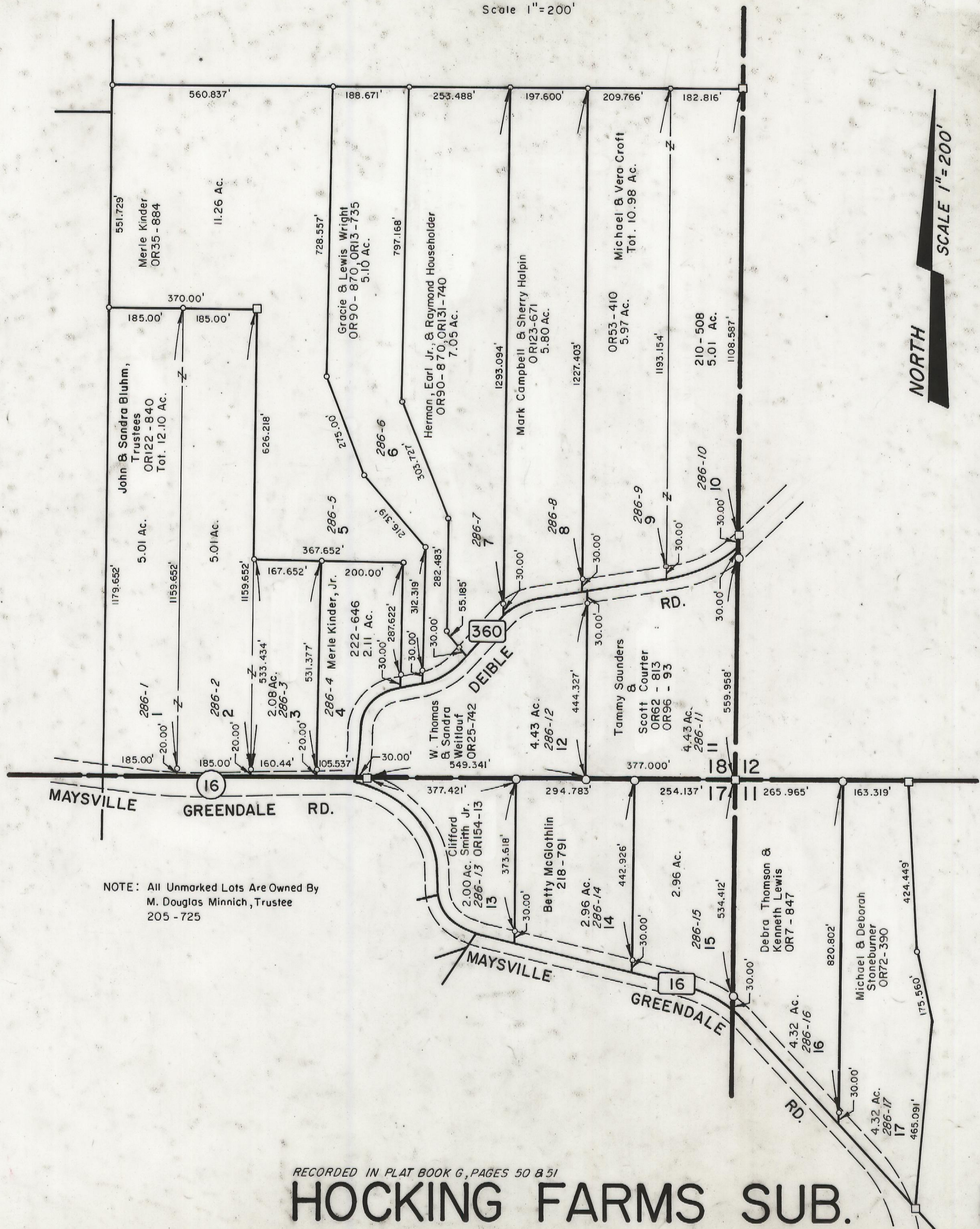


5-1200

HOCKING COUNTY  
GREEN TWP.  
SEC'S. II, 17, & 18, T-13 R-16  
Scale 1"=200'

HOCKING FARMS SUB. 18-B



NOTE: All Unmarked Lots Are Owned By  
M. Douglas Minnich, Trustee  
205 - 725

RECORDED IN PLAT BOOK G, PAGES 50 & 51

HOCKING FARMS SUB. 18-B