

HOCKING COUNTY

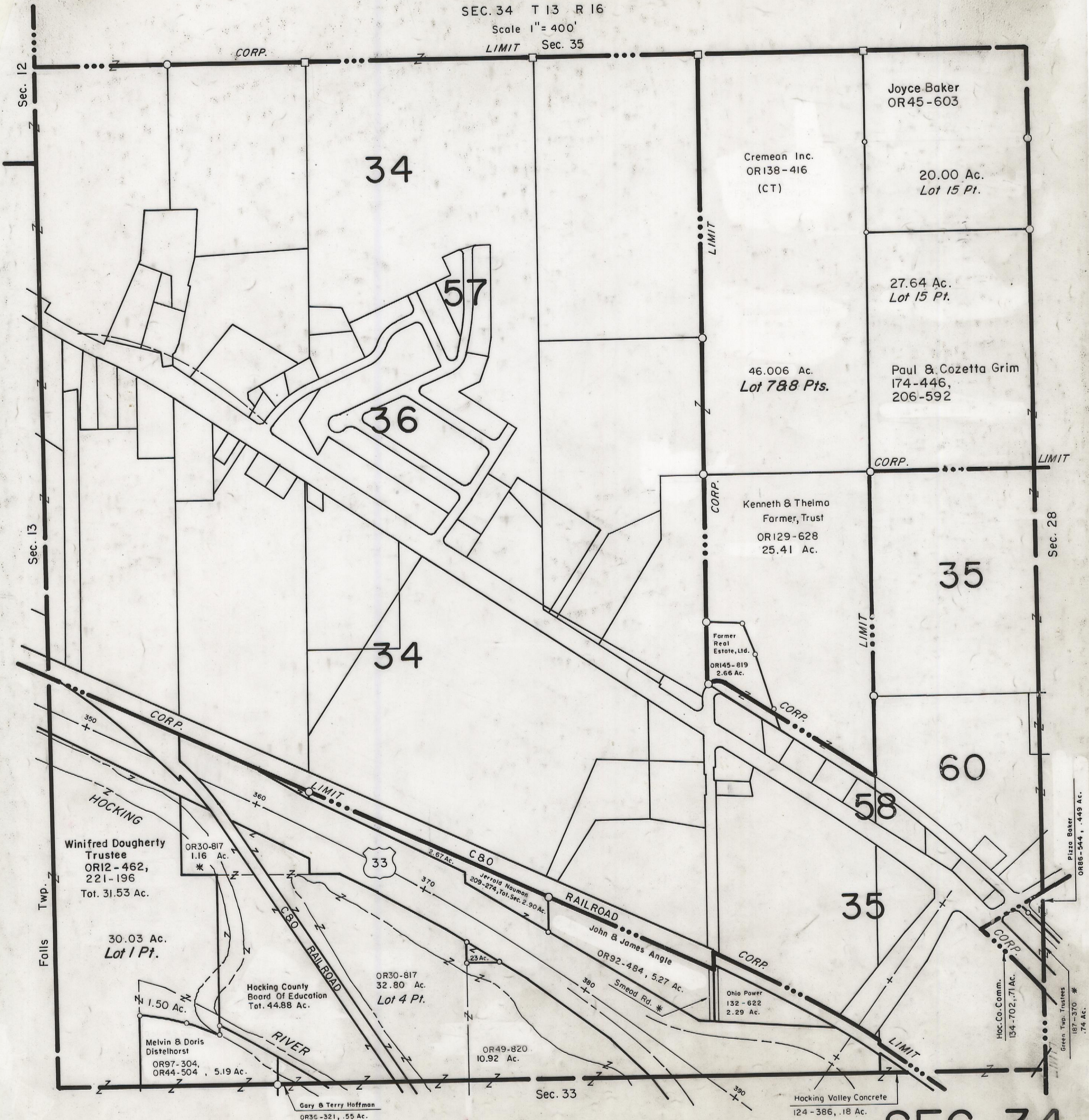
GREEN TWP.

SEC. 34 T 13 R 16

Scale 1" = 400'

LIMIT Sec. 35

5-12-00



34

57

36

34

Joyce Baker
OR45-603

Cremean Inc.
OR138-416
(CT)

20.00 Ac.
Lot 15 Pt.

27.64 Ac.
Lot 15 Pt.

46.006 Ac.
Lot 7&8 Pts.

Paul & Cozetta Grim
174-446,
206-592

Kenneth & Thelma
Farmer, Trust
OR129-628
25.41 Ac.

35

Farmer
Real
Estate, Ltd.
OR145-819
2.66 Ac.

60

58

35

Winifred Dougherty
Trustee
OR12-462,
221-196
Tot. 31.53 Ac.

OR30-817
1.16 Ac.
*

30.03 Ac.
Lot 1 Pt.

Hocking County
Board Of Education
Tot. 44.88 Ac.

OR30-817
32.80 Ac.
Lot 4 Pt.

Melvin & Doris
Distelhorst
OR97-304,
OR44-504, 5.19 Ac.

OR49-820
10.92 Ac.

Gary & Terry Hoffman
OR36-321, .55 Ac.

Ohio Power
132-622
2.29 Ac.

Hoc. Co. Comm.
134-702, .71 Ac.

Pirza Baker
OR86-544, .449 Ac.

Green Twp. Trustees
187-370 *
.74 Ac.

Hocking Valley Concrete
124-386, .18 Ac.

SEC. 34