

4-5-00

HOCKING COUNTY

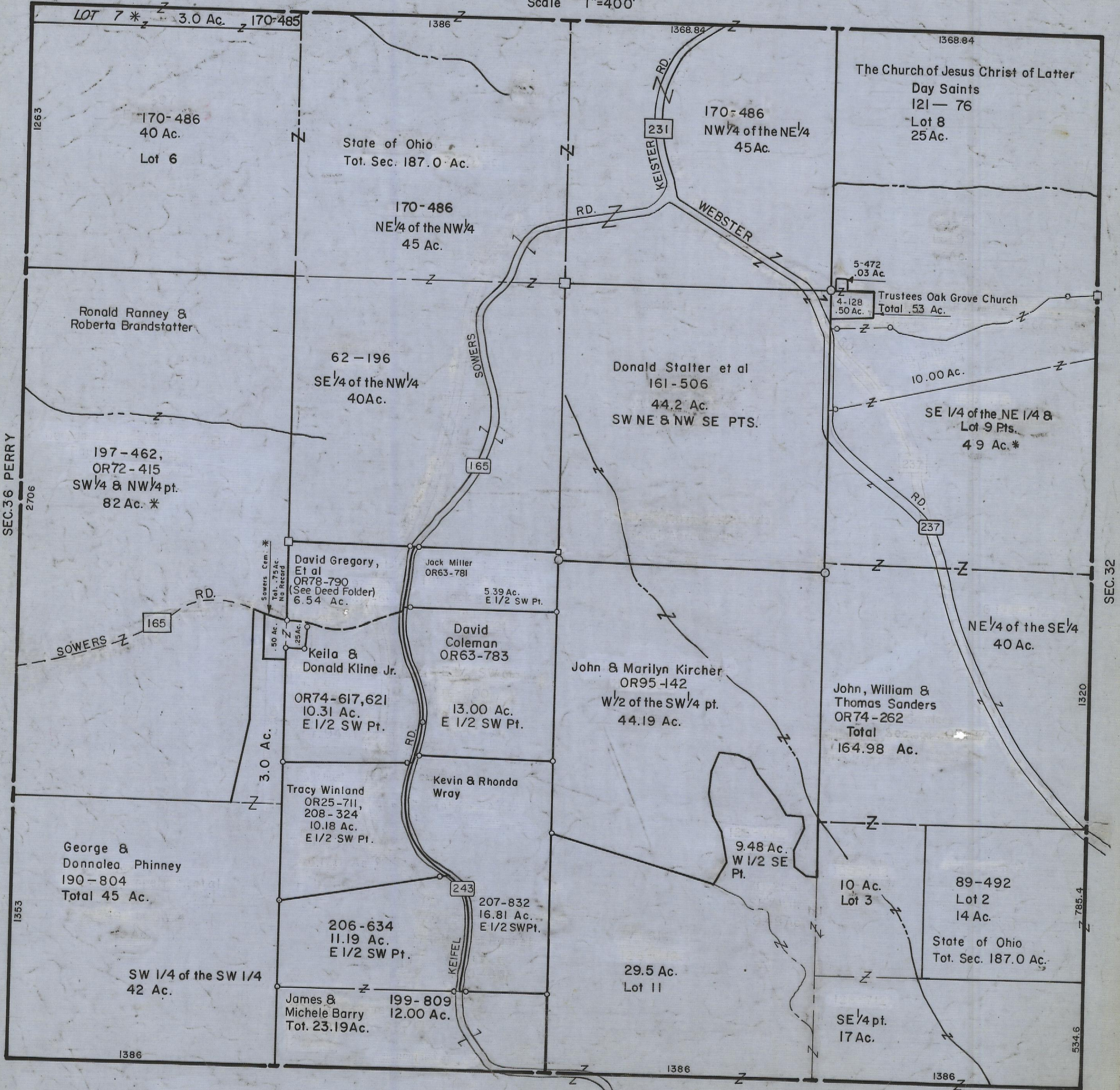
Sec. 31 T12 R 18

LAUREL TWP

Scale 1"=400'

SEC. 30

SEC. 30



SEC. 36 PERRY

SEC. 32

SEC. 6 BENTON

SEC. 31

LOT 7 * 3.0 Ac. 170-485

170-486
40 Ac.
Lot 6

State of Ohio
Tot. Sec. 187.0 Ac.

170-486
NE 1/4 of the NW 1/4
45 Ac.

170-486
NW 1/4 of the NE 1/4
45 Ac.

The Church of Jesus Christ of Latter
Day Saints
121-76
Lot 8
25 Ac.

Ronald Ranney &
Roberta Brandstatter

62-196
SE 1/4 of the NW 1/4
40 Ac.

Donald Stalter et al
161-506
44.2 Ac.
SW NE & NW SE PTS.

Trustees Oak Grove Church
Total .53 Ac.

197-462,
OR72-415
SW 1/4 & NW 1/4 pt.
82 Ac. *

SE 1/4 of the NE 1/4 &
Lot 9 Pts.
49 Ac. *

David Gregory,
Et al
OR78-790
(See Deed Folder)
6.54 Ac.

Jack Miller
OR63-781
5.39 Ac.
E 1/2 SW Pt.

David
Coleman
OR63-783
13.00 Ac.
E 1/2 SW Pt.

John & Marilyn Kircher
OR95-142
W 1/2 of the SW 1/4 pt.
44.19 Ac.

John, William &
Thomas Sanders
OR74-262
Total
164.98 Ac.

Keila &
Donald Kline Jr.
OR74-617,621
10.31 Ac.
E 1/2 SW Pt.

Kevin & Rhonda
Wray

Tracy Winland
OR25-711,
208-324
10.18 Ac.
E 1/2 SW Pt.

9.48 Ac.
W 1/2 SE
Pt.

George &
Donnalea Phinney
190-804
Total 45 Ac.

10 Ac.
Lot 3

89-492
Lot 2
14 Ac.

206-634
11.19 Ac.
E 1/2 SW Pt.

207-832
16.81 Ac.
E 1/2 SW Pt.

29.5 Ac.
Lot 11

State of Ohio
Tot. Sec. 187.0 Ac.

SW 1/4 of the SW 1/4
42 Ac.

James &
Michele Barry
Tot. 23.19 Ac.

SE 1/4 pt.
17 Ac.

1386

1386

1386

534.6

1320

1263

2706

1353

785.4