

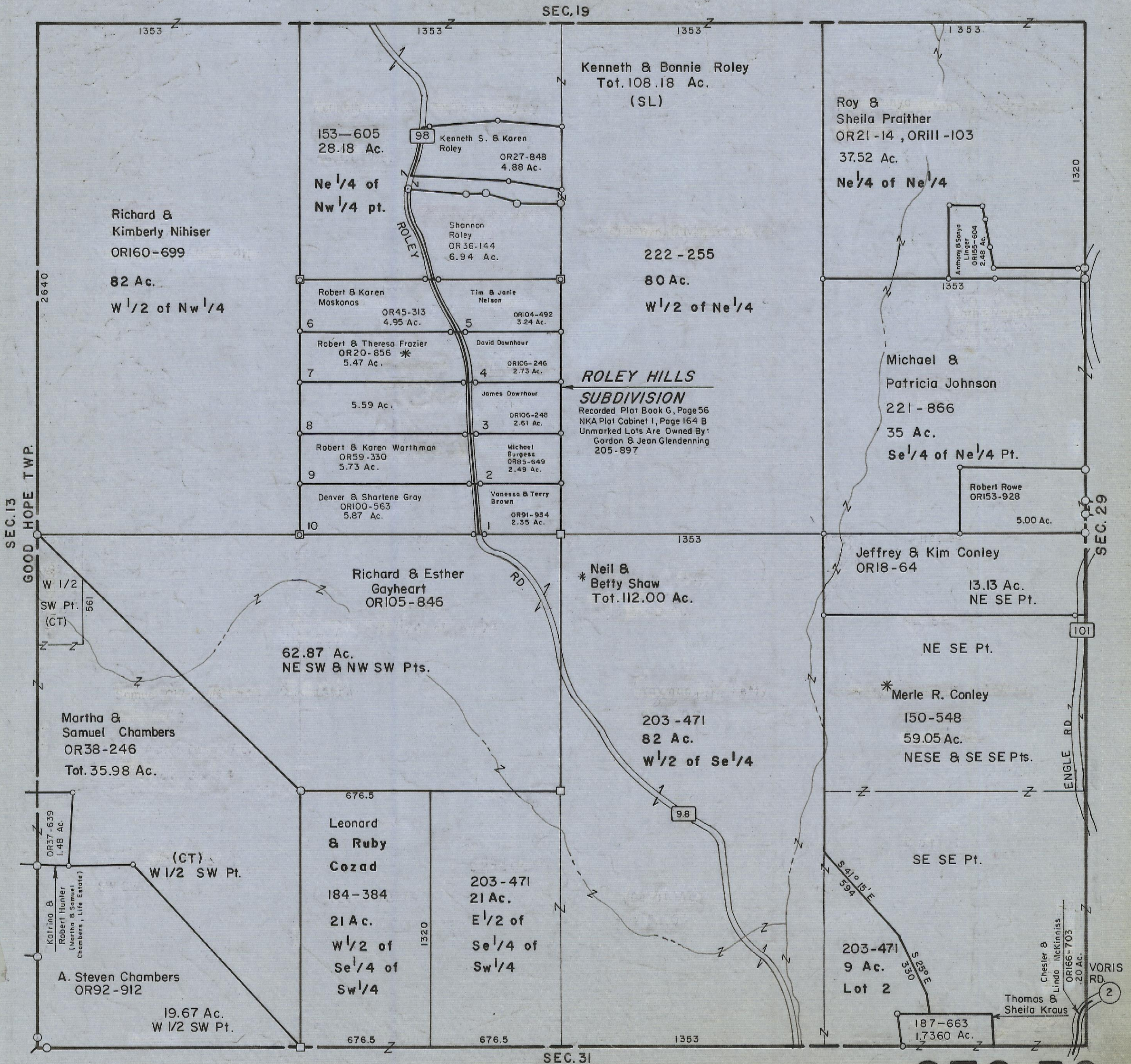
5-10-68

HOCKING COUNTY

Sec. 30 T.15 R.17

MARION TWP.

Scale 1" = 400'



Kenneth & Bonnie Roley
Tot. 108.18 Ac.
(SL)

Roy & Sheila Praither
OR21-14, OR111-103
37.52 Ac.
Ne 1/4 of Ne 1/4

Richard & Kimberly Nihiser
OR160-699
82 Ac.
W 1/2 of Nw 1/4

153-605
28.18 Ac.
Ne 1/4 of Nw 1/4 pt.

98 Kenneth S. & Karen Roley
OR27-848
4.88 Ac.

Shannon Roley
OR36-144
6.94 Ac.

222-255
80 Ac.
W 1/2 of Ne 1/4

6 Robert & Karen Moskonos
OR45-313
4.95 Ac.

5 Tim & Janie Nelson
OR104-492
3.24 Ac.

7 Robert & Theresa Frazier
OR20-856 *
5.47 Ac.

4 David Downhour
OR106-246
2.73 Ac.

ROLEY HILLS SUBDIVISION
Recorded Plat Book G, Page 56
NKA Plat Cabinet 1, Page 164 B
Unmarked Lots Are Owned By:
Gordon & Jean Glendenning
205-897

8 5.59 Ac.

3 James Downhour
OR106-248
2.61 Ac.

9 Robert & Karen Warthman
OR59-330
5.73 Ac.

2 Michael Burgess
OR85-649
2.49 Ac.

10 Denver & Sharlene Gray
OR100-563
5.87 Ac.

1 Vanessa & Terry Brown
OR91-934
2.35 Ac.

Michael & Patricia Johnson
221-866
35 Ac.
Se 1/4 of Ne 1/4 Pt.

Robert Rowe
OR153-928
5.00 Ac.

Jeffrey & Kim Conley
OR18-64
13.13 Ac.
NE SE Pt.

Richard & Esther Gayheart
OR105-846
62.87 Ac.
NE SW & NW SW Pts.

* Neil & Betty Shaw
Tot. 112.00 Ac.

* Merle R. Conley
150-548
59.05 Ac.
NESE & SE SE Pts.

Martha & Samuel Chambers
OR38-246
Tot. 35.98 Ac.

203-471
82 Ac.
W 1/2 of Se 1/4

Leonard & Ruby Cozad
184-384
21 Ac.
W 1/2 of Se 1/4 of Sw 1/4

203-471
21 Ac.
E 1/2 of Se 1/4 of Sw 1/4

203-471
9 Ac.
Lot 2

A. Steven Chambers
OR92-912
19.67 Ac.
W 1/2 SW Pt.

187-663
1,736.0 Ac.

Thomas & Sheila Kraus

SEC 30