

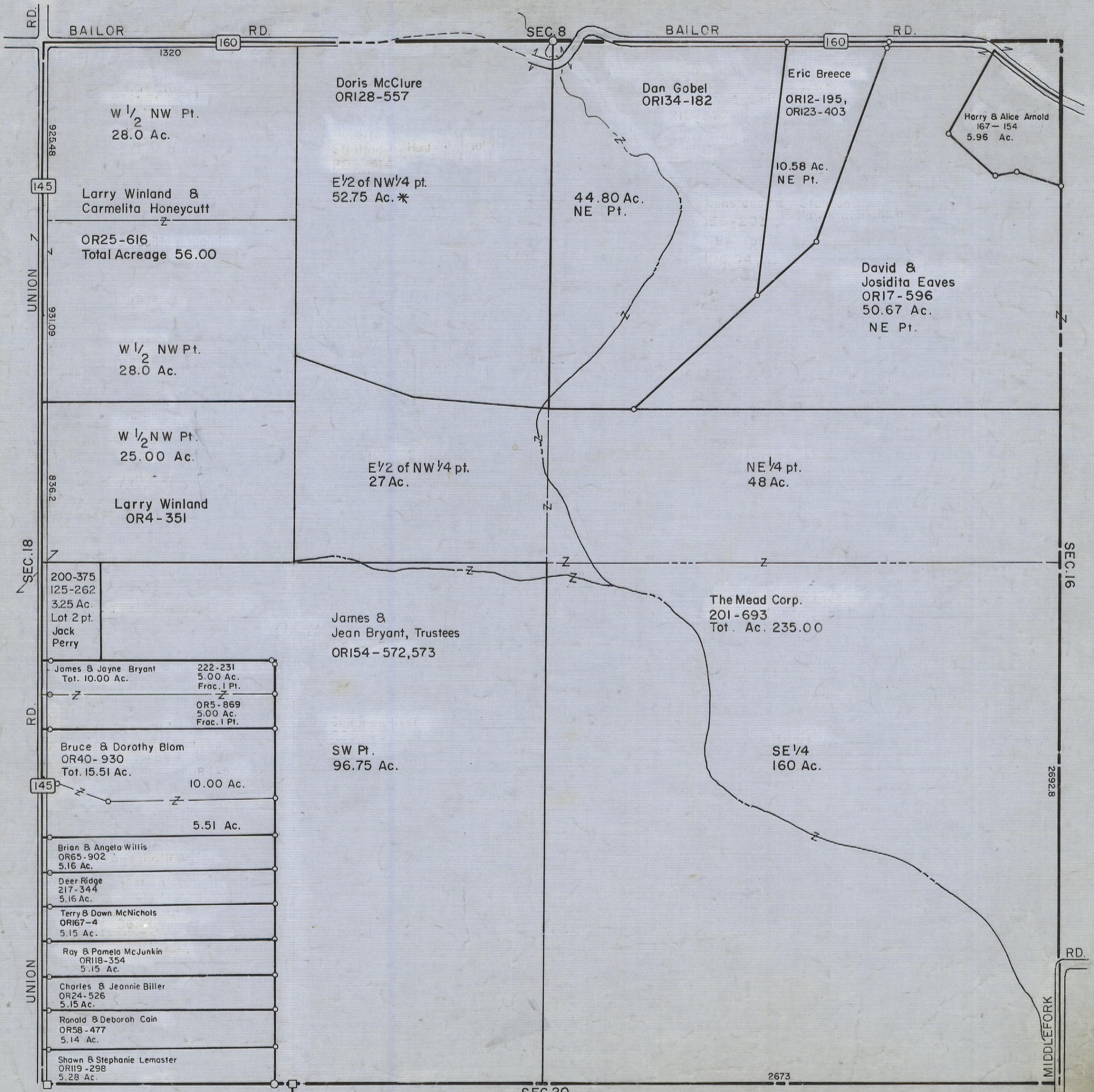
5-12-00

HOCKING COUNTY

Sec. 17 T12 R19

PERRY TWP.

Scale: 1" = 400'



W 1/2 NW Pt.
28.0 Ac.

Doris McClure
OR128-557

Dan Gobel
OR134-182

Eric Breece
OR12-195,
OR123-403

Harry & Alice Arnold
167-154
5.96 Ac.

Larry Winland &
Carmelita Honeycutt

E 1/2 of NW 1/4 pt.
52.75 Ac. *

44.80 Ac.
NE Pt.

10.58 Ac.
NE Pt.

David &
Josidita Eaves
OR17-596
50.67 Ac.
NE Pt.

OR25-616
Total Acreage 56.00

W 1/2 NW Pt.
28.0 Ac.

W 1/2 NW Pt.
25.00 Ac.

Larry Winland
OR4-351

E 1/2 of NW 1/4 pt.
27 Ac.

NE 1/4 pt.
48 Ac.

200-375
125-262
3.25 Ac.
Lot 2 pt.
Jack
Perry

James &
Jean Bryant, Trustees
OR154-572,573

The Mead Corp.
201-693
Tot. Ac. 235.00

James & Jayne Bryant
Tot. 10.00 Ac.
222-231
5.00 Ac.
Frac. 1 Pt.

OR5-869
5.00 Ac.
Frac. 1 Pt.

Bruce & Dorothy Blom
OR40-930
Tot. 15.51 Ac.
10.00 Ac.

SW Pt.
96.75 Ac.

SE 1/4
160 Ac.

5.51 Ac.

Brian & Angela Willis
OR65-902
5.16 Ac.

Deer Ridge
217-344
5.16 Ac.

Terry & Dawn McNichols
OR167-4
5.15 Ac.

Ray & Pamela McJunkin
OR118-354
5.15 Ac.

Charles & Jeannie Biller
OR24-526
5.15 Ac.

Ronald & Deborah Cain
OR58-477
5.14 Ac.

Shawn & Stephanie Lemaster
OR119-298
5.28 Ac.

SEC. 17