

5-12-00

HOCKING COUNTY

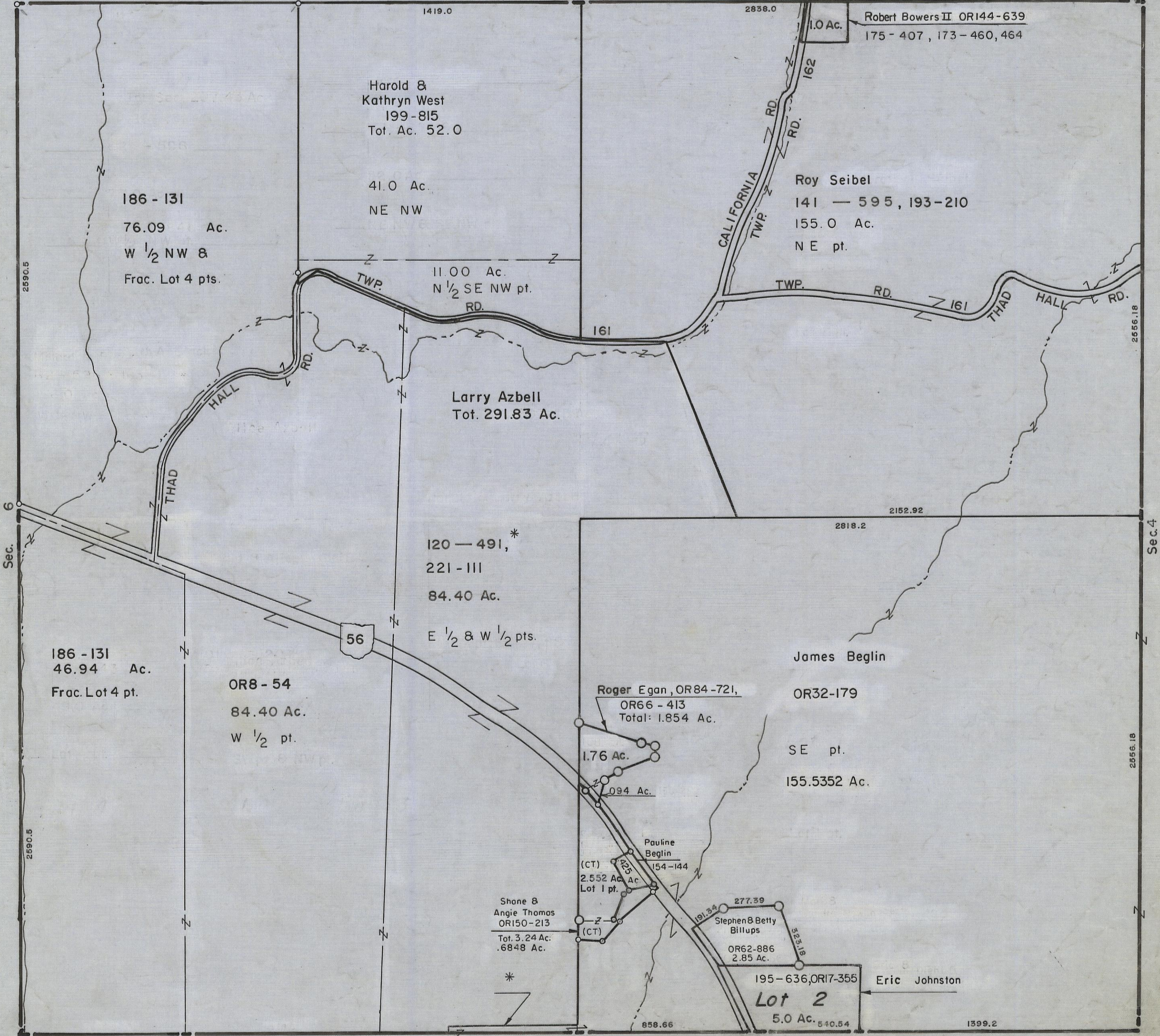
Sec. 5 T11 R19

SALT CREEK TWP.

Scale 1"=400'

Perry Twp.
Sec. 33

Perry Twp. Sec. 32



Harold & Kathryn West
199-815
Tot. Ac. 52.0

186 - 131
76.09 Ac.
W 1/2 NW 8
Frac. Lot 4 pts.

41.0 Ac.
NE NW

11.00 Ac.
N 1/2 SE NW pt.
RD.

Roy Seibel
141 — 595, 193-210
155.0 Ac.
NE pt.

1.0 Ac. Robert Bowers II OR144-639
175-407, 173-460, 464

Larry Azbell
Tot. 291.83 Ac.

120 — 491,*
221 - III
84.40 Ac.
E 1/2 & W 1/2 pts.

186 - 131
46.94 Ac.
Frac. Lot 4 pt.

OR8 - 54
84.40 Ac.
W 1/2 pt.

James Beglin
OR32-179
SE pt.
155.5352 Ac.

Roger Egan, OR84-721,
OR66-413
Total: 1.854 Ac.

1.76 Ac.
.094 Ac.

Pauline Beglin
(CT) 154-144
2.552 Ac. Ac.
Lot 1 pt.

Shane & Angie Thomas
OR150-213
Tot. 3.24 Ac.
.6848 Ac.

Stephen & Betty Billups
OR62-886
2.85 Ac.

Eric Johnston
195-636, OR17-355
Lot 2
5.0 Ac.

SEC. 5

BOTTOM TIER