

5-12-00

HOCKING COUNTY

Sec.19 T12 R16

STARR TWP.

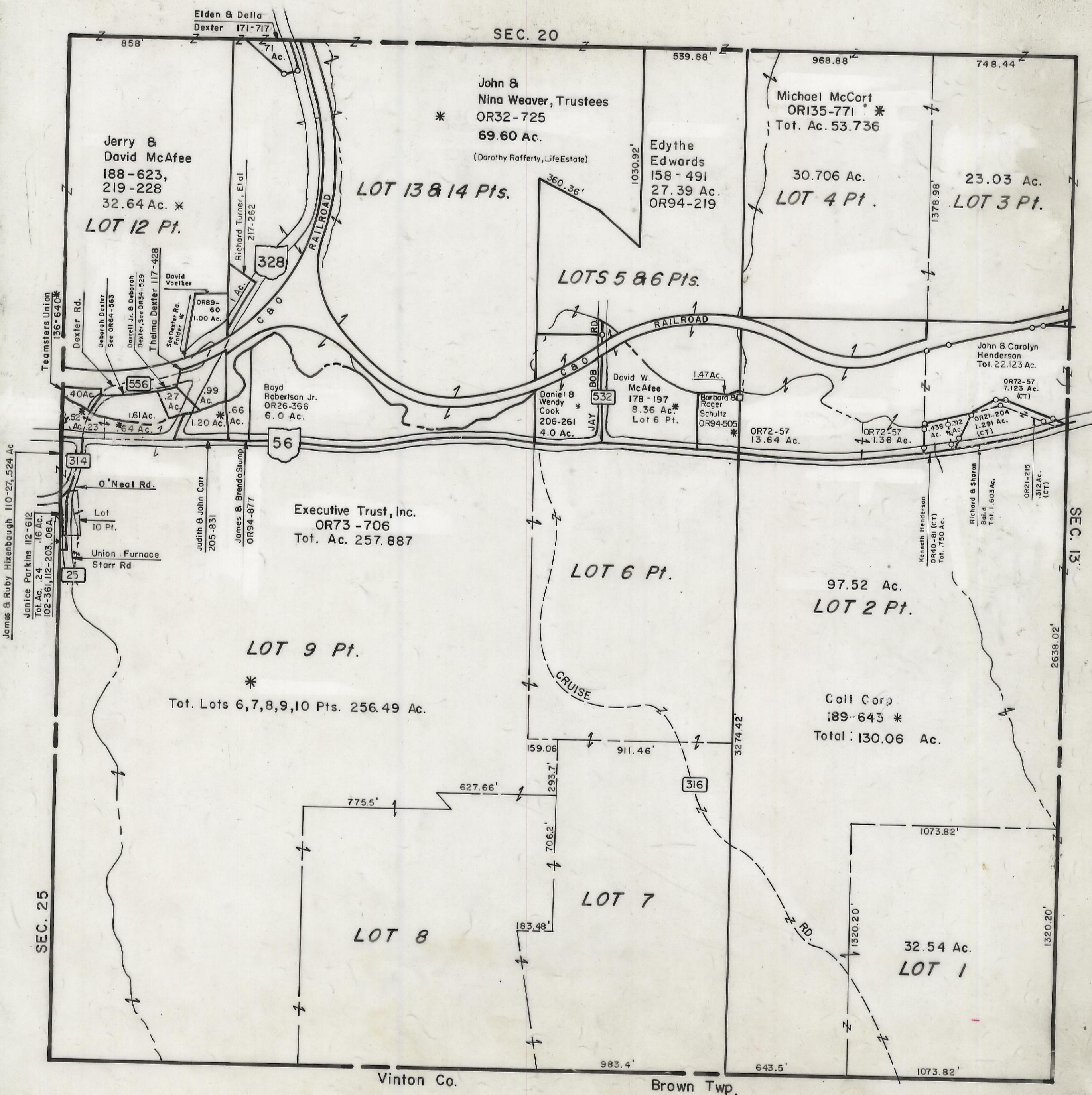
Scale 1" = 400'

SEC. 20

SEC. 13

SEC. 25

SEC. 19



Jerry & David McAfee
188-623,
219-228
32.64 Ac. *
LOT 12 Pt.

John & Nina Weaver, Trustees
*
OR32-725
69.60 Ac.
(Dorothy Rafferty, Life Estate)
LOT 13 & 14 Pts.

Michael McCort
OR135-771 *
Tot. Ac. 53.736
30.706 Ac.
LOT 4 Pt.

23.03 Ac.
LOT 3 Pt.

LOTS 5 & 6 Pts.

John & Carolyn Henderson
Tot. 22.123 Ac.
OR72-57
7.123 Ac. (CT)

Executive Trust, Inc.
OR73-706
Tot. Ac. 257.887

LOT 6 Pt.

97.52 Ac.
LOT 2 Pt.

LOT 9 Pt.
*
Tot. Lots 6,7,8,9,10 Pts. 256.49 Ac.

Coll Corp
189-643 *
Total: 130.06 Ac.

LOT 7

LOT 8

32.54 Ac.
LOT 1

SEC. 19