

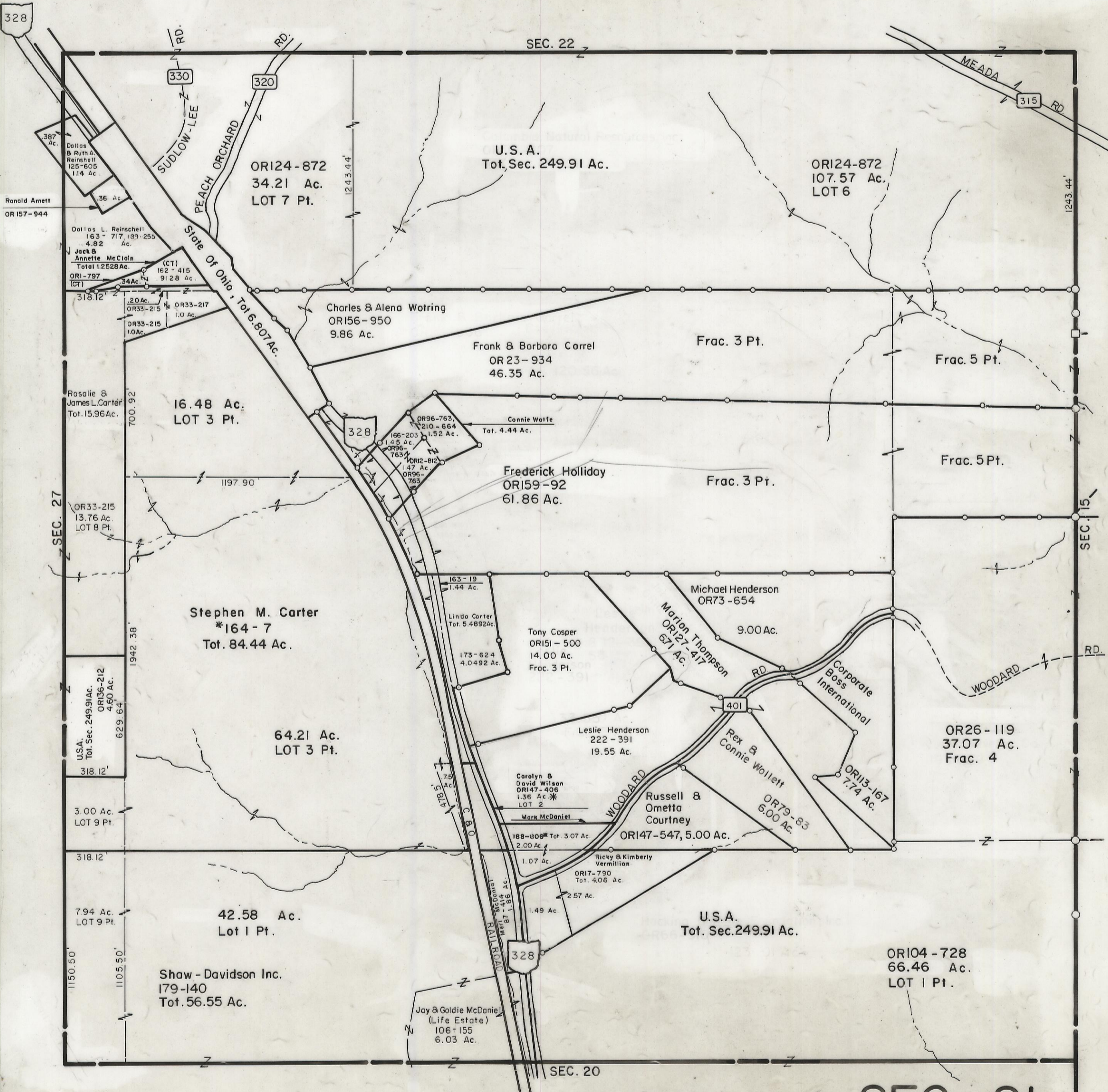
5-12-00

# HOCKING COUNTY

## STARR TWP.

### SEC. 21 T12 R16

Scale 1" = 400'



328

Ronald Arnett  
OR 157-944

SEC. 27

1150.50'

1105.50'

SEC. 21

SEC. 22

U.S.A.  
Tot. Sec. 249.91 Ac.

ORI24-872  
107.57 Ac.  
LOT 6

1243.44'

Dallas L. Reinschell  
163-717, 189-253  
4.82 Ac.  
Jack & Annette McClain  
Total 1.2528 Ac.  
ORI-797  
(CT) 34 Ac.  
162-415  
9128 Ac.

Rosalie & James L. Carter  
Tot. 15.96 Ac.

U.S.A.  
Tot. Sec. 249.91 Ac.  
ORI36-212  
4.60 Ac.

3.00 Ac.  
LOT 9 Pt.

318.12'

7.94 Ac.  
LOT 9 Pt.

1150.50'

1105.50'

SEC. 21

SEC. 21

SEC. 21

SEC. 21

RD.  
330  
SUDLOW-LEE

RD.  
320  
PEACH ORCHARD

State Of Ohio, Tot. 6.807 Ac.

16.48 Ac.  
LOT 3 Pt.

Stephen M. Carter  
\*164-7  
Tot. 84.44 Ac.

64.21 Ac.  
LOT 3 Pt.

42.58 Ac.  
Lot 1 Pt.

Shaw - Davidson Inc.  
179-140  
Tot. 56.55 Ac.

Jay & Goldie McDaniel  
(Life Estate)  
106-155  
6.03 Ac.

ORI24-872  
34.21 Ac.  
LOT 7 Pt.

Charles & Alena Wotring  
ORI56-950  
9.86 Ac.

Frank & Barbara Carrel  
OR 23-934  
46.35 Ac.

Frac. 3 Pt.

Frac. 5 Pt.

328  
OR96-763, 210-664  
1.52 Ac.  
OR96-763  
1.47 Ac.  
OR12-812  
1.47 Ac.  
OR96-763  
1.47 Ac.

Frederick Holliday  
ORI59-92  
61.86 Ac.

Frac. 3 Pt.

Frac. 5 Pt.

163-19  
1.44 Ac.

Linda Carter  
Tot. 5.4892 Ac.

173-624  
4.0492 Ac.

Tony Cosper  
ORI51-500  
14.00 Ac.  
Frac. 3 Pt.

Michael Henderson  
OR73-654  
9.00 Ac.

Marion Thompson  
ORI27-417  
671 Ac.

Corporate  
Boss  
International

OR26-119  
37.07 Ac.  
Frac. 4

WOODWARD RD.

Leslie Henderson  
222-391  
19.55 Ac.

Carolyn & David Wilson  
ORI47-406  
1.36 Ac.\*  
LOT 2

Mark McDaniel

188-006 Tot. 3.07 Ac.  
2.00 Ac.

1.07 Ac.

1.49 Ac.

2.57 Ac.

ORI17-790  
Tot. 4.06 Ac.

1.49 Ac.

1.49 Ac.

1.49 Ac.

1.49 Ac.

1.49 Ac.

1.49 Ac.

1.49 Ac.

Russell & Ometta  
Courtney  
ORI47-547, 5.00 Ac.

Rex & Connie Wollett  
OR79-83  
6.00 Ac.

ORI13-167  
7.74 Ac.

U.S.A.  
Tot. Sec. 249.91 Ac.

ORI04-728  
66.46 Ac.  
LOT 1 Pt.

SEC. 20

SEC. 15

# SEC. 21