

5-12-00

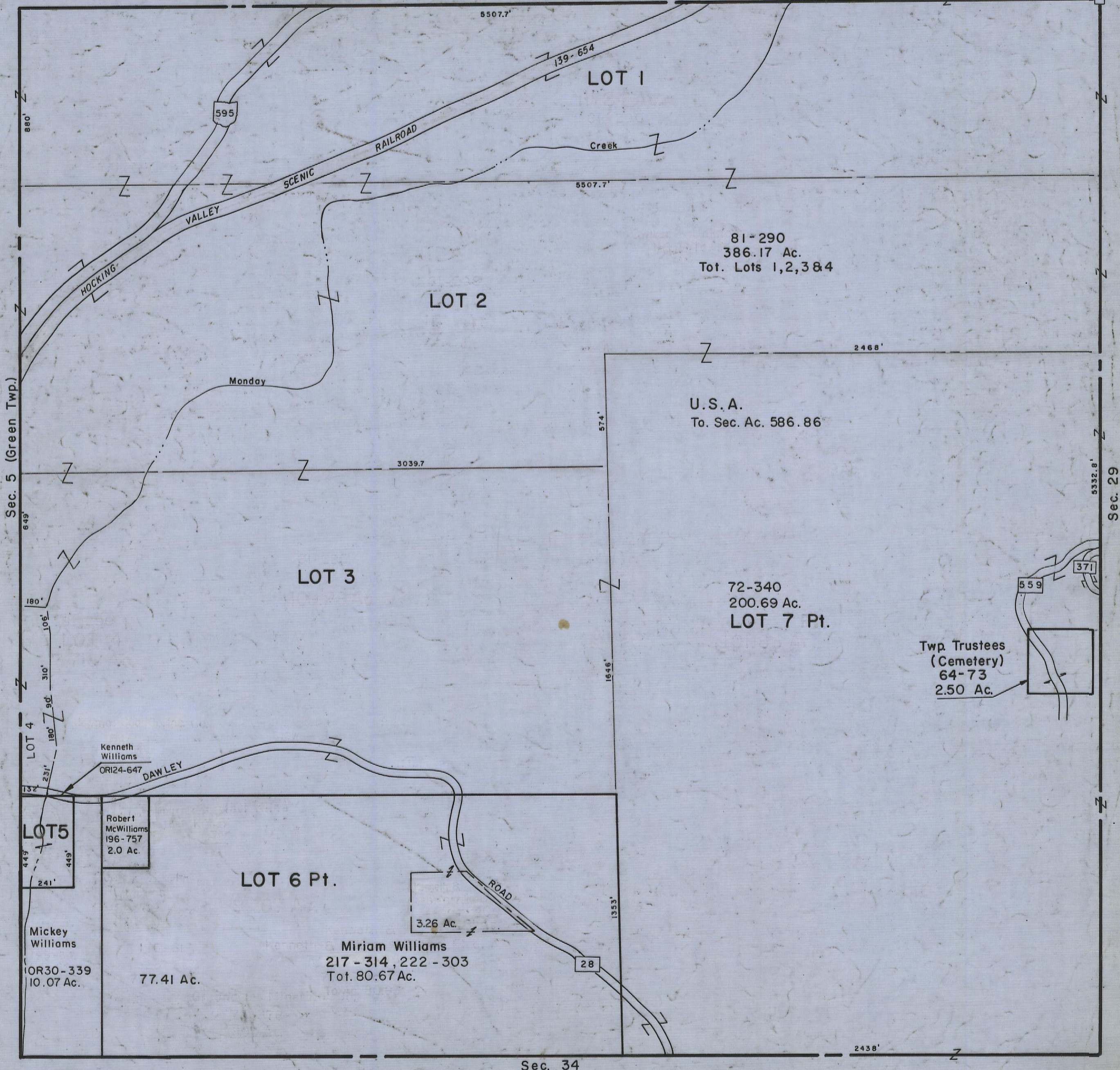
# HOCKING COUNTY

Sec. 35 T13 R15

WARD TWP

Scale 1" = 400'

Sec. 36



Sec. 5 (Green Twp.)

Sec. 29

Sec. 34

# Sec. 35

81-290  
386.17 Ac.  
Tot. Lots 1,2,3&4

U.S.A.  
To. Sec. Ac. 586.86

72-340  
200.69 Ac.  
LOT 7 Pt.

Twp. Trustees  
(Cemetery)  
64-73  
2.50 Ac.

Kenneth Williams  
OR124-647

Robert McWilliams  
196-757  
2.0 Ac.

Mickey Williams  
OR30-339  
10.07 Ac.

Miriam Williams  
217-314, 222-303  
Tot. 80.67 Ac.

3.26 Ac.

77.41 Ac.

5507.7'

5507.7'

2468'

3039.7

574'

1646'

1353'

2438'

5332.8'

139-654

595

371

559

28