

4-5-00

HOCKING COUNTY

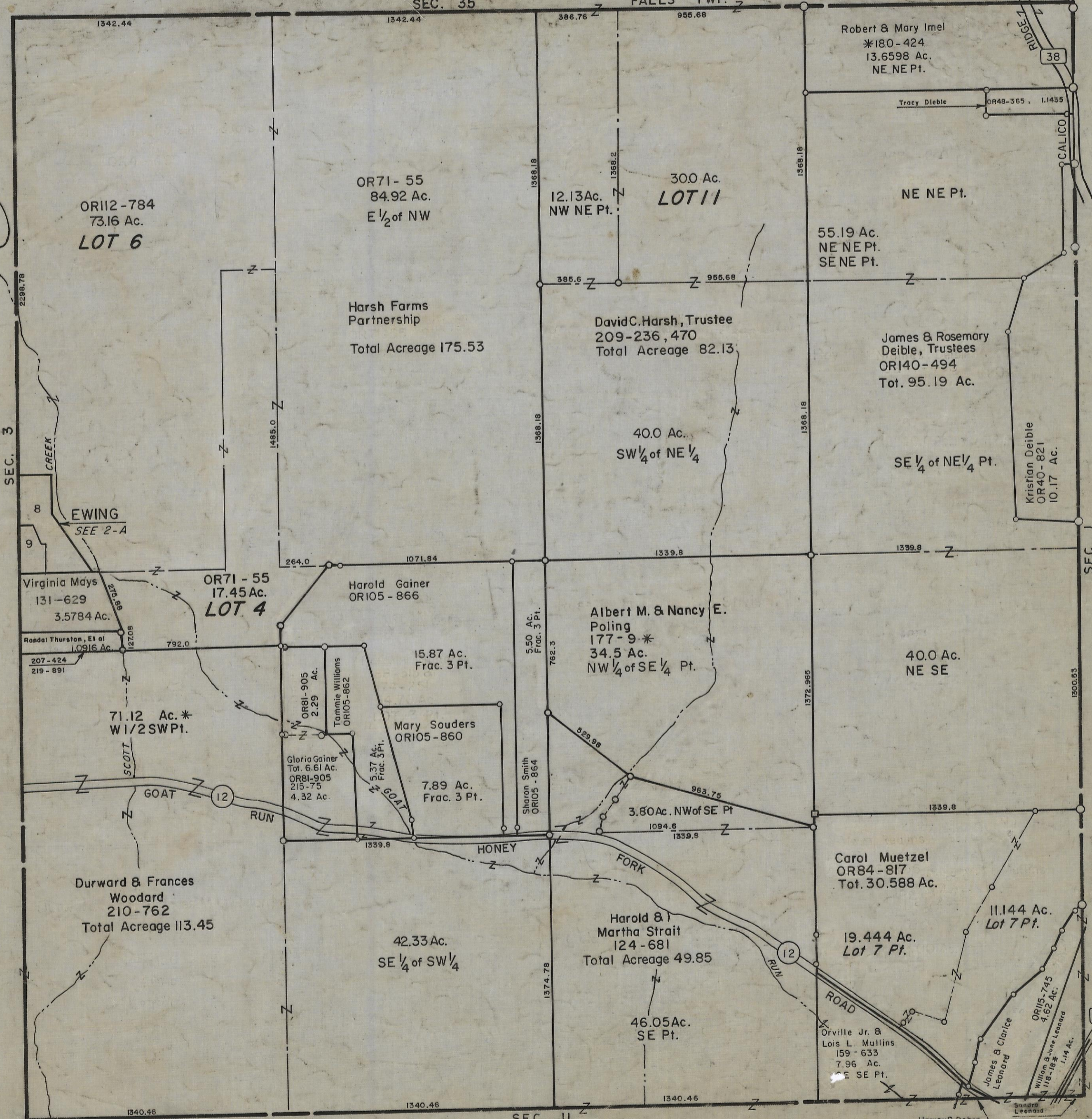
Sec. 2 T13 R17

WASHINGTON TWP.

Scale 1"=400'

SEC. 35

FALLS TWP.



OR112-784
73.16 Ac.
LOT 6

OR71-55
84.92 Ac.
E 1/2 of NW

300 Ac.
LOT 11
12.13 Ac.
NW NE Pt.

Robert & Mary Imel
*180-424
13.6598 Ac.
NE NE Pt.

Harsh Farms
Partnership
Total Acreage 175.53

David C. Harsh, Trustee
209-236, 470
Total Acreage 82.13

James & Rosemary
Deible, Trustees
OR140-494
Tot. 95.19 Ac.

40.0 Ac.
SW 1/4 of NE 1/4

SE 1/4 of NE 1/4 Pt.

Kristian Deible
OR40-821
10.17 Ac.

Virginia Mays
131-629
3.5784 Ac.

OR71-55
17.45 Ac.
LOT 4

Harold Gainer
OR105-866

Albert M. & Nancy E.
Poling
177-9*
34.5 Ac.
NW 1/4 of SE 1/4 Pt.

40.0 Ac.
NE SE

71.12 Ac.*
W 1/2 SW Pt.

OR81-905
2.29 Ac.
Tammie Williams
OR105-862

15.87 Ac.
Frac. 3 Pt.

Mary Souders
OR105-860

7.89 Ac.
Frac. 3 Pt.

Gloria Gainer
Tot. 6.61 Ac.
OR81-905
215-75
4.32 Ac.

5.37 Ac.
Frac. 3 Pt.

Carol Muetzel
OR84-817
Tot. 30.588 Ac.

Durward & Frances
Woodard
210-762
Total Acreage 113.45

42.33 Ac.
SE 1/4 of SW 1/4

Harold & Martha Strait
124-681
Total Acreage 49.85

19.444 Ac.
Lot 7 Pt.

11.144 Ac.
Lot 7 Pt.

46.05 Ac.
SE Pt.

Orville Jr. & Lois L. Mullins
159-633
7.96 Ac.
SE SE Pt.

James & Clarice
Leonard
OR115-745
4.62 Ac.

William & June Leonard
118-18*
1.14 Ac.

Harvey & Debra
Miller, 214-99
.04 Ac.

Sandra Leonard
OR100-760
.07 Ac.

SEC. 2