

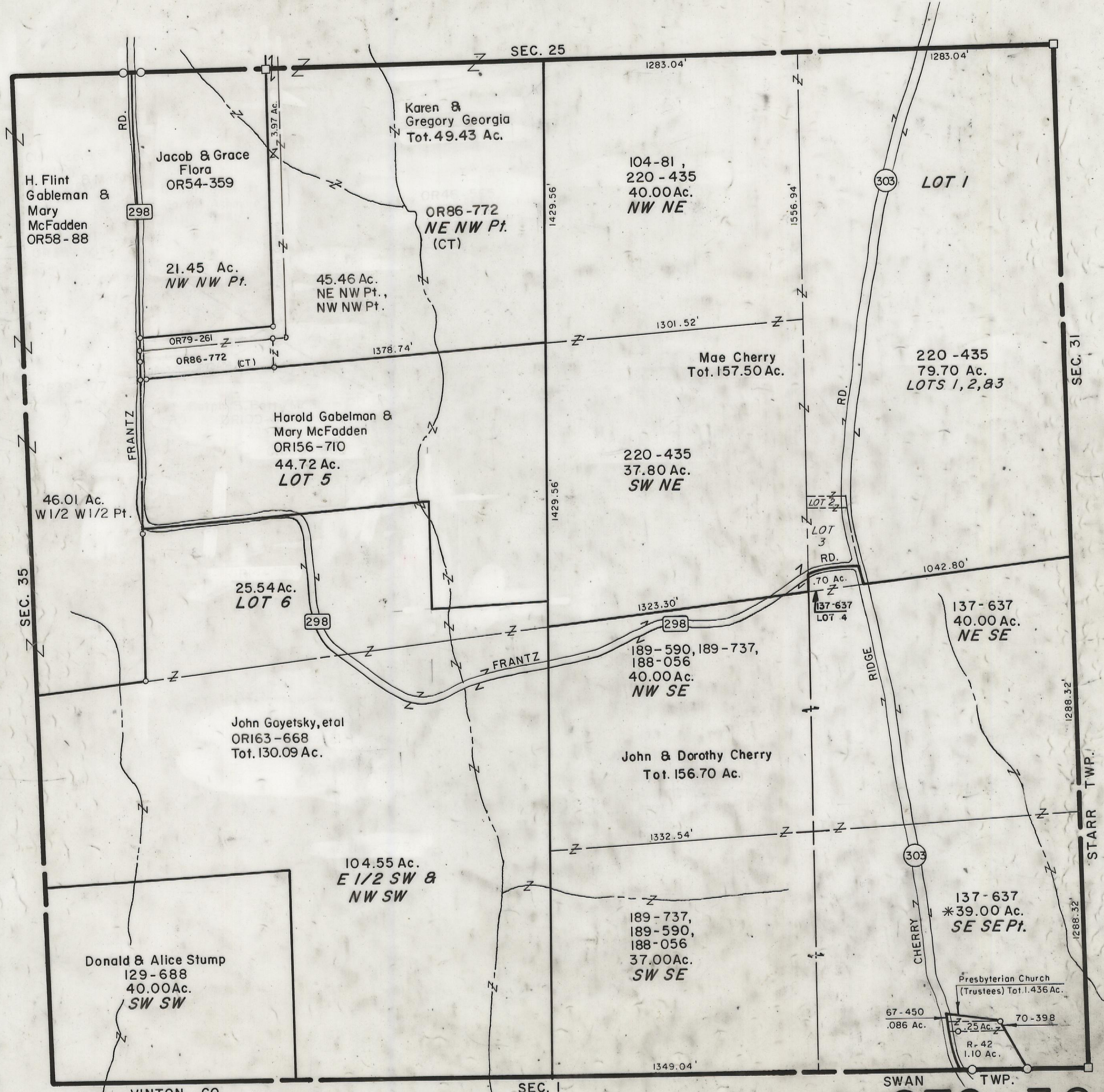
4-5-00

HOCKING COUNTY

WASHINGTON TWP.

SEC. 36 T 13 R 17

Scale 1"=400'



H. Flint Gableman & Mary McFadden OR58-88

Jacob & Grace Flora OR54-359

Karen & Gregory Georgia Tot. 49.43 Ac.

104-81, 220-435 40.00 Ac. NW NE

21.45 Ac. NW NW Pt.

45.46 Ac. NE NW Pt., NW NW Pt.

OR86-772 NE NW Pt. (CT)

Mae Cherry Tot. 157.50 Ac.

220-435 79.70 Ac. LOTS 1, 2, & 3

OR79-261 OR86-772 (CT)

Harold Gabelman & Mary McFadden ORI56-710 44.72 Ac. LOT 5

220-435 37.80 Ac. SW NE

46.01 Ac. W 1/2 W 1/2 Pt.

25.54 Ac. LOT 6

189-590, 189-737, 188-056 40.00 Ac. NW SE

137-637 40.00 Ac. NE SE

John Goyetsky, etal ORI63-668 Tot. 130.09 Ac.

John & Dorothy Cherry Tot. 156.70 Ac.

104.55 Ac. E 1/2 SW & NW SW

189-737, 189-590, 188-056 37.00 Ac. SW SE

137-637 *39.00 Ac. SE SE Pt.

Donald & Alice Stump 129-688 40.00 Ac. SW SW

Presbyterian Church (Trustees) Tot. 1.436 Ac.

67-450 .086 Ac.

.25 Ac.

R-42 1.10 Ac.

70-398

VINTON CO.

SEC. 1

SWAN TWP.

SEC. 36