

136-749
Tot. Sec. 62.23 Ac.
54.00 Ac.
Frac. 2
020025570000

Nancy Selz
138-392
20.87 Ac.
Frac. 1 Pt.
020025920000

Dennis & Brenda
Davis
Tot. 40.00 Ac.

OR321-815
35.00 Ac.
W 1/2 N 1/2 NE Pt.
020025990000

Terry Born, II
OR108-518
25.62 Ac.
NE NE Pt.
020026010000

ience Institute, Inc.
18-764
16 Ac.
ot 4
(CT)
26000208

Scott & Meredith Nice
OR120-338
19.75 Ac.
Lot 6
020026000210

Carlen & Lee
Emanuel
OR251-518
11.00 Ac.
020026500000

Jean Traikovich
OR90-104
193-244
104.00 Ac.
W 1/2 Pt.
020026470000

Charles & Brenda Wilson
209-886
10.67 Ac.
020026510000

Ruth Chapman
170-723
10.67 Ac.
020026510000

PHASE I
- Lot 1 Revised -
- New Lot 1 "A", Lot 1 "B",
- Plat Cabinet 2, Pg. 105 -

Laura Scott
OR104-857
Tot. 1.76 Ac.
020026000211

Richard & Wanda
Carpenter
216-366
1.00 Ac.
020026500000

IGER RD.

Traikovich
99-408
10.00 Ac.
020026190100

00 Ac.
1/2 SE

10.00 Ac.
W 1/2 W 1/2 SE SE

Gerald & Lorene
Jumper
OR169-517
25.67 Ac.
SE pt.
020026150100

Linda Conner & Loren Inboden
OR265-736
23.65 Ac.
020026450000

Linda Conner & Loren Inboden
OR265-736
Tot. 62.98
020026450000

39.33 Ac.
Frac. 4

Harvey, Sarah & Wanda Devore
OR54-328
54.27 Ac.
Frac. 3
020026460000

Terry & Barbara
Warthman
222-133
4.44 Ac.
020026430200

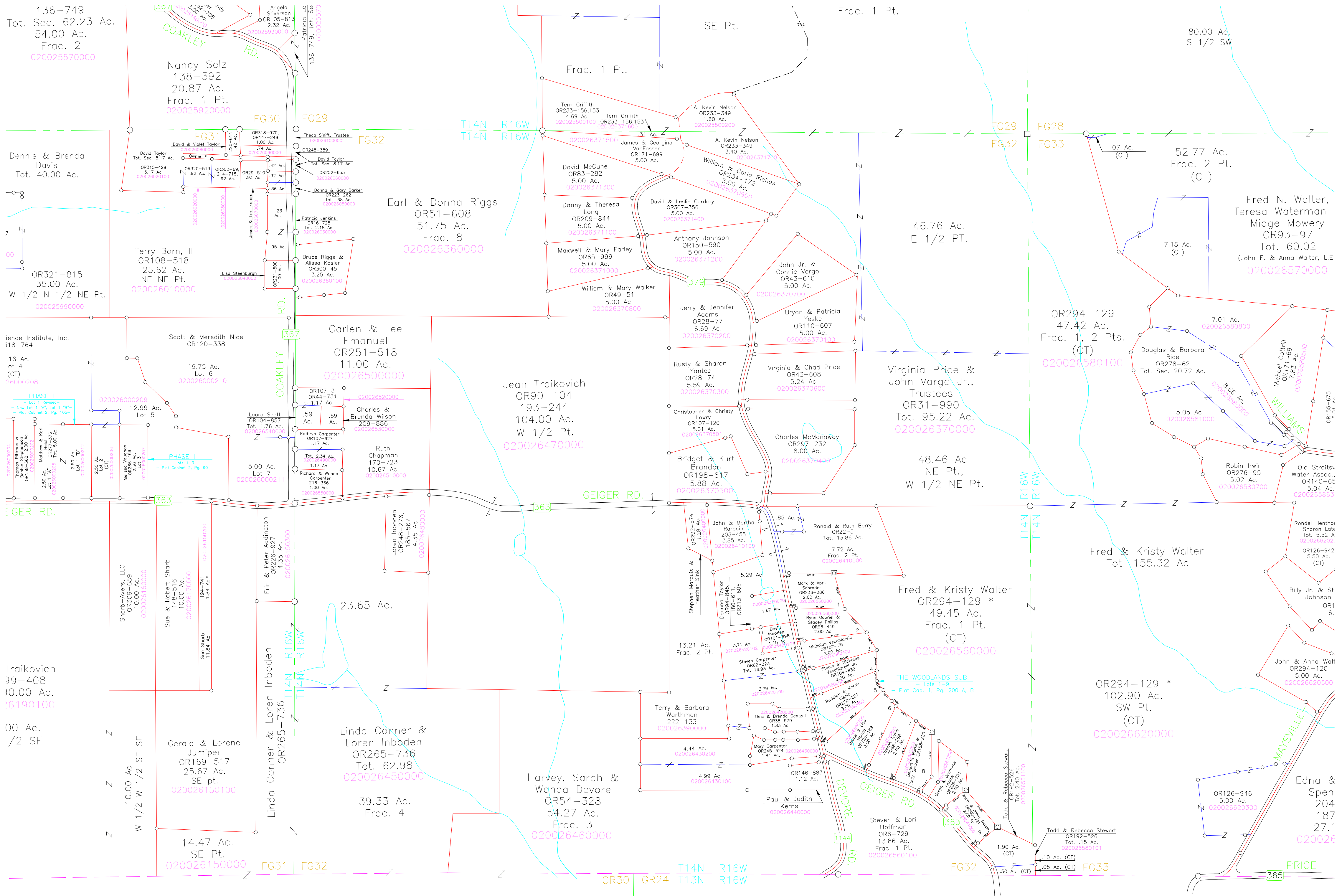
Mary Carpenter
OR245-524
1.84 Ac.
020026430100

Paul & Judith
Kerns
1.12 Ac.
020026440000

Steven & Lori
Hoffman
OR6-729
13.86 Ac.
Frac. 1 Pt.
020026560100

Todd & Rebecca Stewart
OR192-526
Tot. .15 Ac.
020026560100

Edna & Spen
204
187
27.1
020026



Frac. 1 Pt.

SE Pt.

80.00 Ac.
S 1/2 SW

Frac. 1 Pt.

46.76 Ac.
E 1/2 PT.

52.77 Ac.
Frac. 2 Pt.
(CT)

Fred N. Walter,
Teresa Waterman
Midge Mowery
OR93-97
Tot. 60.02
(John F. & Anna Walter, L.E.)
020026570000

OR294-129
47.42 Ac.
Frac. 1, 2 Pts.
(CT)
020026580100

Douglas & Barbara
Rice
OR278-62
Tot. Sec. 20.72 Ac.
020026581000

Michael Cottrell
OR171-69
7.83 Ac.
020026580500

Virginia Price &
John Vargo Jr.,
Trustees
OR31-990
Tot. 95.22 Ac.
020026370000

48.46 Ac.
NE Pt.,
W 1/2 NE Pt.
020026370000

Robin Irwin
OR276-95
5.02 Ac.
020026580700

Old Straits
Water Assoc.,
OR140-6E
5.04 Ac.
0200265863

Fred & Kristy Walter
Tot. 155.32 Ac

Fred & Kristy Walter
OR294-129 *
49.45 Ac.
Frac. 1 Pt.
(CT)
020026560000

OR294-129 *
102.90 Ac.
SW Pt.
(CT)
020026620000

Rondel Henthorn
Sharon Latz
Tot. 5.52 A
0200266202

Billy Jr. & St
Johnson
OR1
6.

John & Anna Walt
OR294-120
5.00 Ac.
020026620500

Edna & Spen
204
187
27.1
020026

GR30 GR24 T14N R16W T13N R16W

FG32

PRICE 365