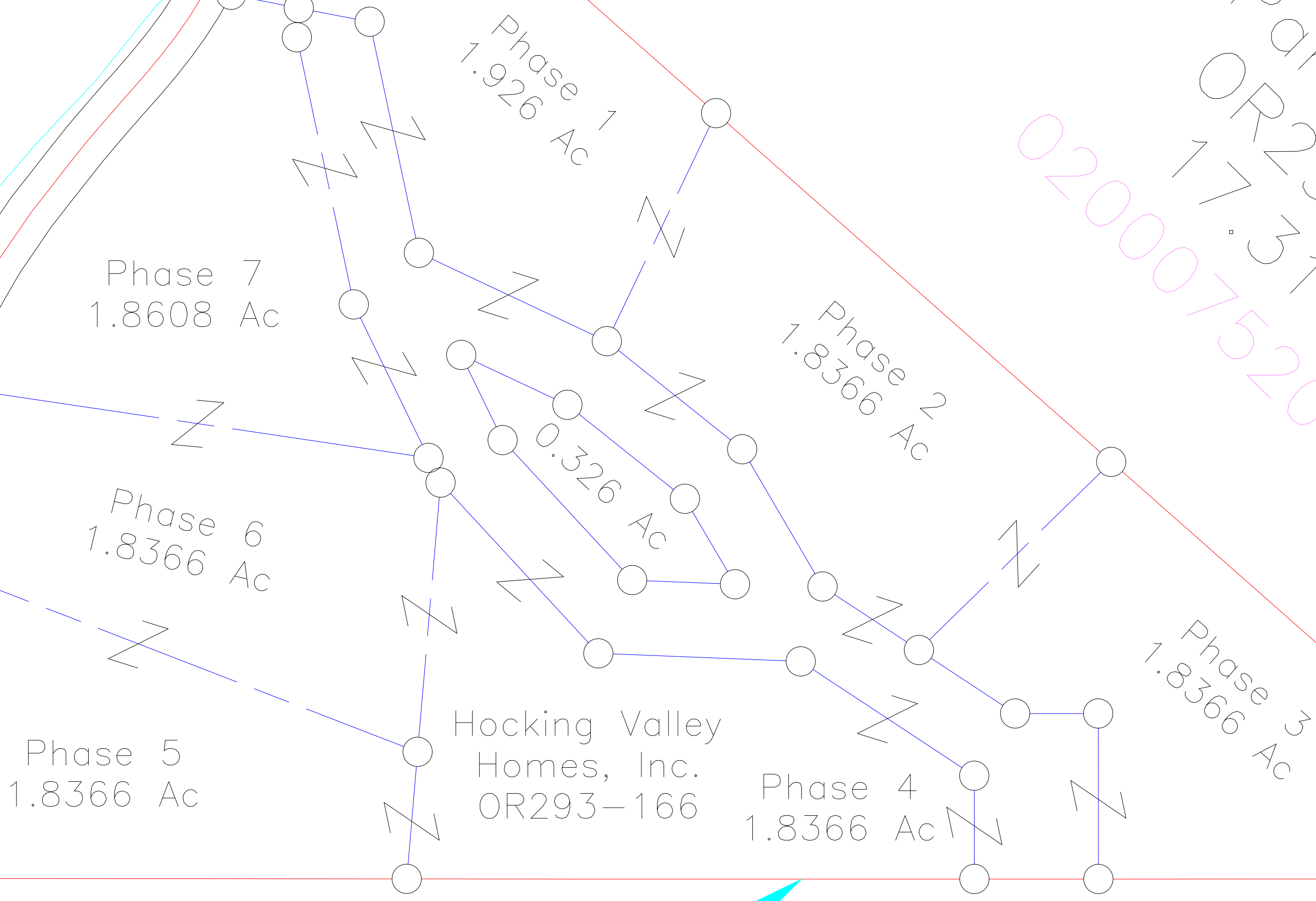


Angela Boelk
167-765
0.00 Ac.
1/2 NE Pt.
007520201

10.1
SE 1
02000

Judith Paris & Anna Noble
OR292-916
17.31 Ac.
020007520500

01
762
Pt.
Pt.
00



EZ Living Estates
- Phase 1-7
- Plat Cab. 2, Pgs. 119