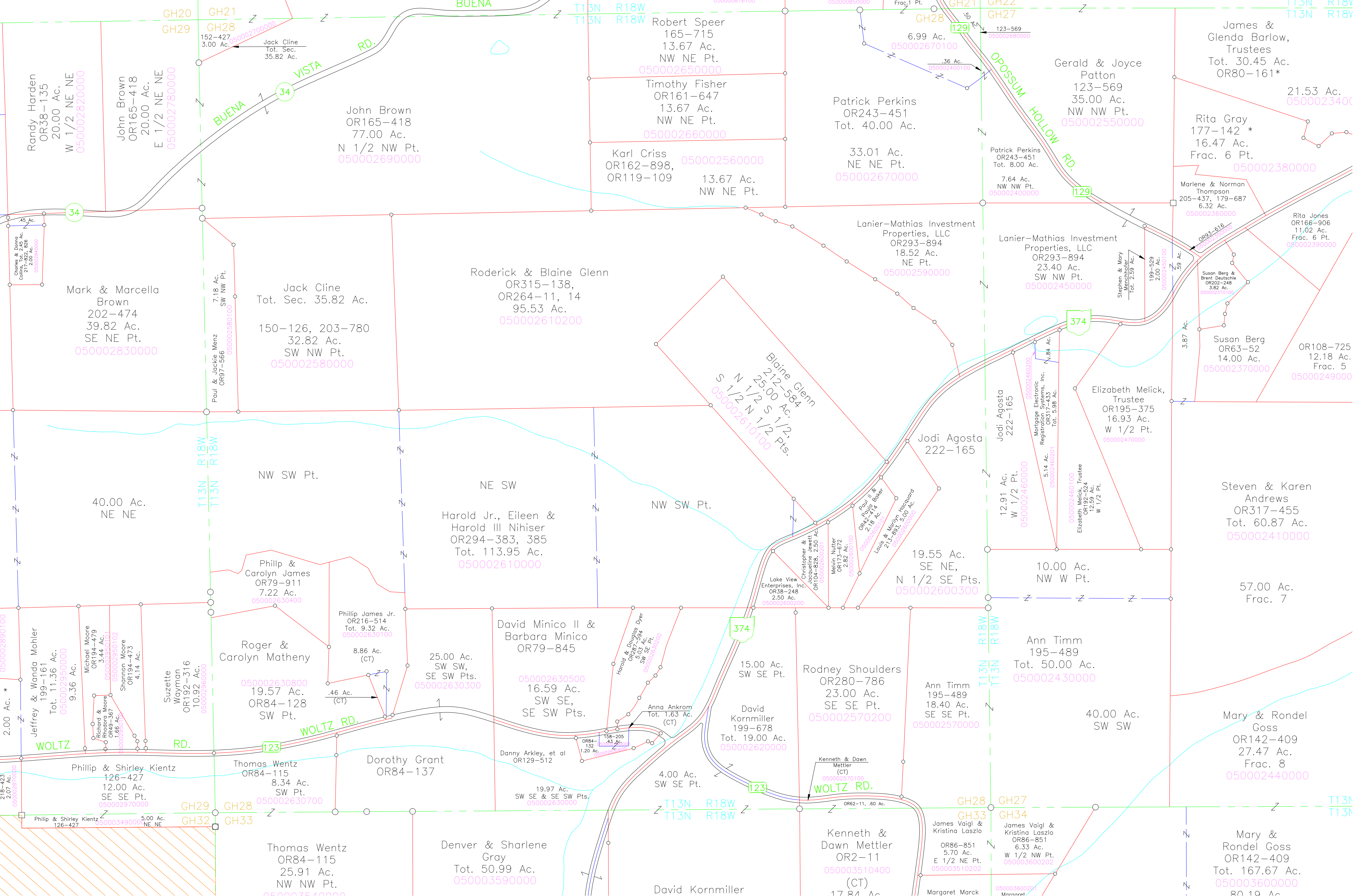


.00 Ac.
E, SW SE

OR165-418
Tot. 109.00 Ac.
050000830000

91.93 Ac.
NW SW Pt..
S 1/2 SW Pt.



Randy Harden
OR38-135
20.00 Ac.
W 1/2 NE NE
050002820000

John Brown
OR165-418
20.00 Ac.
E 1/2 NE NE
050002780000

Mark & Marcella Brown
202-474
39.82 Ac.
SE NE Pt.
050002830000

Jack Cline
Tot. Sec. 35.82 Ac.
150-126, 203-780
SW NW Pt.
050002580000

40.00 Ac.
NE NE

Harold Jr., Eileen & Harold III Nihiser
OR294-383, 385
Tot. 113.95 Ac.
050002610000

Phillip & Carolyn James
OR79-911
7.22 Ac.
050002630400

Roger & Carolyn Matheny
OR84-128
19.57 Ac.
SW Pt.
050002630800

Phillip & Shirley Kientz
OR84-128
12.00 Ac.
SE SE Pt.
050002970000

Thomas Wentz
OR84-115
8.34 Ac.
SW Pt.
050002630700

John Brown
OR165-418
77.00 Ac.
N 1/2 NW Pt.
050002690000

Timothy Fisher
OR161-647
13.67 Ac.
NW NE Pt.
050002660000

Roderick & Blaine Glenn
OR315-138,
OR264-11, 14
95.53 Ac.
050002610200

Blaine Glenn
212-584
25.00 Ac.
S 1/2 S 1/2 Pt.
050002610100

Harold Jr., Eileen & Harold III Nihiser
OR294-383, 385
Tot. 113.95 Ac.
050002610000

Phillip James Jr.
OR216-514
Tot. 9.32 Ac.
050002630100

David Minico II & Barbara Minico
OR79-845
16.59 Ac.
SW SE, SE SW Pts.
050002630500

Anna Ankrom
Tot. 1.63 Ac.
(CT)
050002630000

Thomas Wentz
OR84-115
25.91 Ac.
NW NW Pt.
050002630000

Denver & Sharlene Gray
Tot. 50.99 Ac.
050003590000

Robert Speer
165-715
13.67 Ac.
NW NE Pt.
050002650000

Karl Criss
OR162-898,
OR119-109
13.67 Ac.
NW NE Pt.
050002560000

Lanier-Mathias Investment Properties, LLC
OR293-894
18.52 Ac.
NE Pt.
050002590000

Lanier-Mathias Investment Properties, LLC
OR293-894
23.40 Ac.
SW NW Pt.
050002450000

Harold & Douglas Dyer
OR297-894
SW SE Pt.
050002630000

Anna Ankrom
Tot. 1.63 Ac.
(CT)
050002630000

David Kornmiller
199-678
Tot. 19.00 Ac.
050002620000

Rodney Shoulders
OR280-786
23.00 Ac.
SE SE Pt.
050002570200

David Kornmiller
17 RA Ac.
050003510400

Kenneth & Dawn Mettler
OR2-11
(CT)
050003510400

Gail & Phyllis Woltz
OR140-233
12.00 Ac.
050000810000

Patrick Perkins
OR243-451
2.00 Ac.
Frac. Pt.
050002670100

Jodi Agosta
222-165
12.91 Ac.
W 1/2 Pt.
050002460000

Elizabeth Melick, Trustee
OR195-375
16.93 Ac.
W 1/2 Pt.
050002470000

Ann Timm
195-489
Tot. 50.00 Ac.
050002430000

Mary & Rondel Goss
OR142-409
27.47 Ac.
Frac. 8
050002440000

Ann Timm
195-489
18.40 Ac.
SE SE Pt.
050002570000

Ann Timm
195-489
Tot. 50.00 Ac.
050002430000

James Vaigl & Kristina Laszlo
OR86-851
5.70 Ac.
E 1/2 NE Pt.
050003510202

James Vaigl & Kristina Laszlo
OR86-851
6.33 Ac.
W 1/2 NW Pt.
050003600202

Gerald & Joyce Patton
123-269, Tot. 2.00 Ac.
050000850000

Gerald & Joyce Patton
123-569
35.00 Ac.
NW NW Pt.
050002550000

Rita Gray
177-142 *
16.47 Ac.
Frac. 6 Pt.
050002380000

Rita Jones
OR166-906
11.02 Ac.
Frac. 6 Pt.
050002390000

Elizabeth Melick, Trustee
OR195-375
16.93 Ac.
W 1/2 Pt.
050002470000

Steven & Karen Andrews
OR317-455
Tot. 60.87 Ac.
050002410000

Ann Timm
195-489
18.40 Ac.
SE SE Pt.
050002570000

Ann Timm
195-489
Tot. 50.00 Ac.
050002430000

James Vaigl & Kristina Laszlo
OR86-851
5.70 Ac.
E 1/2 NE Pt.
050003510202

James Vaigl & Kristina Laszlo
OR86-851
6.33 Ac.
W 1/2 NW Pt.
050003600202