

Rocky Brands Inc.  
OR467-828  
Tot. 17.05 Ac.  
060001980300

Bradley Saunders  
219-786  
11.04 Ac.  
060001880000

Aaron Zaleski  
OR504-525  
8.735 Ac.  
060000610200

U.S.A.  
Tot. Sec. 387.42 Ac.  
73-410  
5.99 Ac.  
060000618000

Bradley Saunders,  
Rentals, LTD  
OR185-876  
19.70 Ac.  
Frac. 2 Pt.  
060001510200

Bradley Saunders  
219-786  
Tot. 10.65 Ac.  
060001530000

Ralph Evans  
195-610, .67 Ac.  
Lot 131  
060000540000

Diana Schoonover  
060001440000

Robert & Sharon  
Smith  
060001450000

171-139  
3.11 Ac.  
060001770000

Charles Lehman,  
LLC  
OR410-285  
060001570000

Michael  
Humphrey  
OR422-370,  
OR153-244  
2.40 Ac.  
060001580100

Robert & Sharon  
Smith  
060001450000

Louis & Carolyn  
Crane  
Tot. 14.48 Ac.  
060001330000

171-139  
6.49 Ac.  
060001770000

Robert Bennett, et al.  
060001300000

Margaret Humphrey  
(T.O.D. 6-4-84)  
060001300000

U.S.A.  
Tot. 85.59 Ac.  
060001506000

U.S.A.  
Tot. 647.38 Ac.  
060000526000

78-216  
611.99 Ac.

John Fuller,  
Trustee  
OR168-838  
47.49 Ac.  
Frac. 2 Pt.  
060001510000

114-60  
46.99 Ac.

Haydenville Allot.  
Out Lots 130, 132, 133  
In Plat Book D, Pg. 77  
nka Plat Cabinet 1, Pg. 75 A

Mike (Michael) Jenkins  
OR439-3  
OR73-726  
Lot 133  
060000540000

118-445  
24.13 Ac.

HAYDENVILLE

Richard Skiver, 130-767  
3.29 Ac.  
060001600000

U.S.A.  
Tot. 85.59 Ac.

114-60  
13.34 Ac.

Debbie Malone  
OR22-88, OR78-72  
Tot. .50 Ac.  
060001300000

114-60  
7.48 Ac.

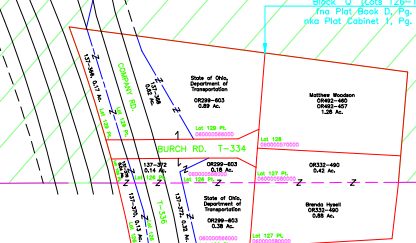
Trustees of M.E. Church,  
Tot. .18 Ac.  
060001300000

L-184  
.94 Ac.

Leona Mason  
OR470-145, 211-437  
(T.O.D. OR470-330)  
18.46 Ac. (calc.)  
060001420000

Sawmiller, LLC  
OR460-495  
2.261 Ac.  
060001420100

HOWARD RD.



336