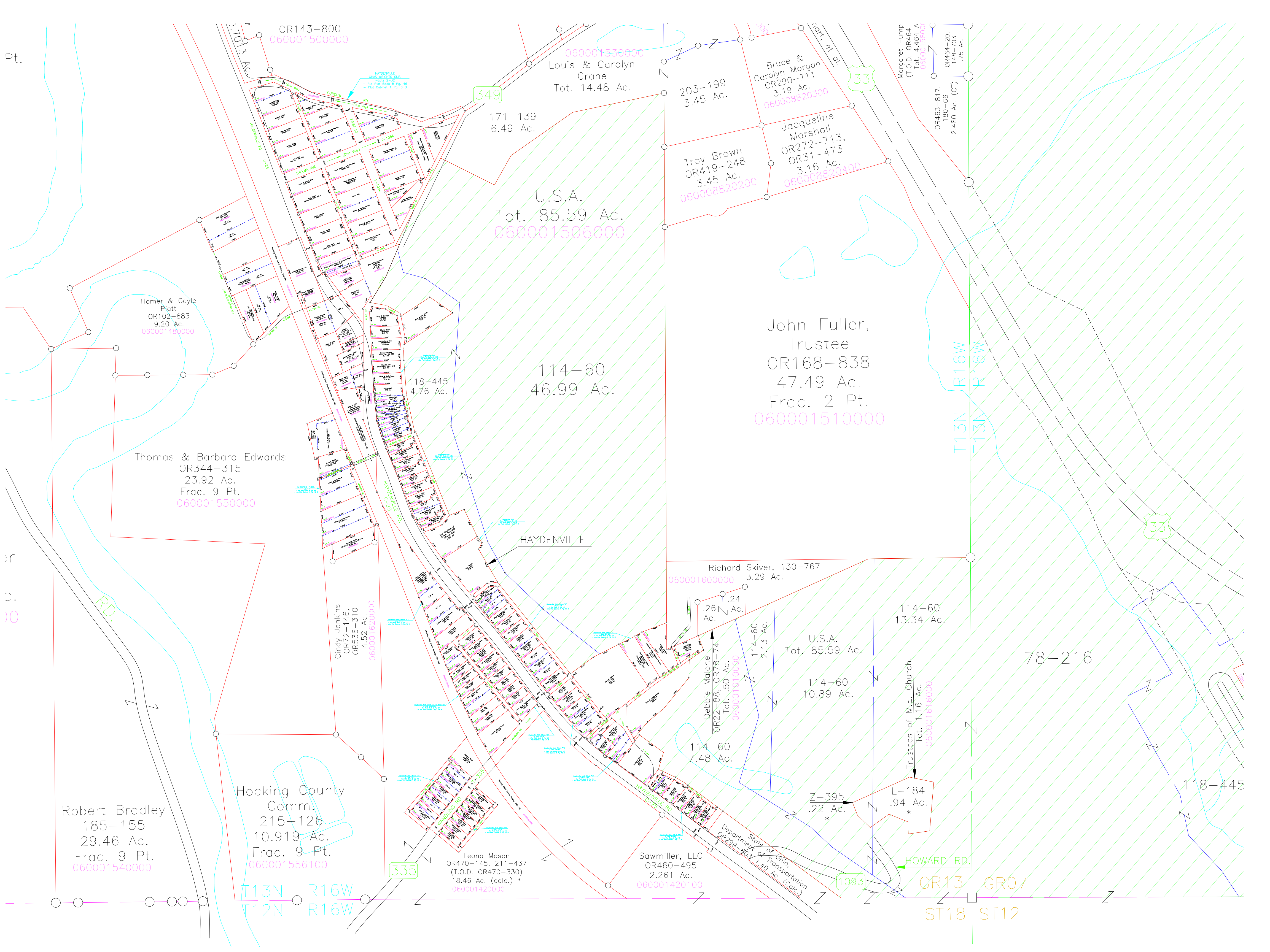


Pt.

r
c.
0



OR143-800
060001500000

060001530000
Louis & Carolyn
Crane
Tot. 14.48 Ac.

203-199
3.45 Ac.

Bruce &
Carolyn Morgan
OR290-711
3.19 Ac.
060008820300

Margaret Hump
(T.O.D. OR464-
Tot. 4.464 Ac.
060001550000
OR463-817,
OR464-20,
148-703
2.480 Ac. (CT)

171-139
6.49 Ac.

U.S.A.
Tot. 85.59 Ac.
060001506000

Troy Brown
OR419-248
3.45 Ac.
060008820200

Jacqueline
Marshall
OR272-713,
OR31-473
3.16 Ac.
060008820400

Homer & Gayle
Piatt
OR102-883
9.20 Ac.
060001480000

118-445
4.76 Ac.

114-60
46.99 Ac.

John Fuller,
Trustee
OR168-838
47.49 Ac.
Frac. 2 Pt.
060001510000

Thomas & Barbara Edwards
OR344-315
23.92 Ac.
Frac. 9 Pt.
060001550000

Cindy Jenkins
OR72-146,
OR536-310
4.52 Ac.
060001620000

HAYDENVILLE

Richard Skiver, 130-767
060001600000 3.29 Ac.

114-60
13.34 Ac.

U.S.A.
Tot. 85.59 Ac.
114-60
10.89 Ac.

78-216

Debbie Malone
OR22-88, OR78-74
Tot. 50 Ac.
060001510000

114-60
7.48 Ac.

Trustees of M.E. Church,
Tot. 1.16 Ac.
060001616000

Robert Bradley
185-155
29.46 Ac.
Frac. 9 Pt.
060001540000

Hocking County
Comm.
215-126
10.919 Ac.
Frac. 9 Pt.
060001556100

Leona Mason
OR470-145, 211-437
(T.O.D. OR470-330)
18.46 Ac. (calc.) *
060001420000

Sawmiller, LLC
OR460-495
2.261 Ac.
060001420100

Z-395
.22 Ac.
*

L-184
.94 Ac.
*

State of Ohio,
Department of Transportation
OR299-603 1.40 Ac. (Calc.)

HOWARD RD.

ST18 ST12

T13N R16W
T12N R16W

GR13 GR07

349

33

33

335

1093