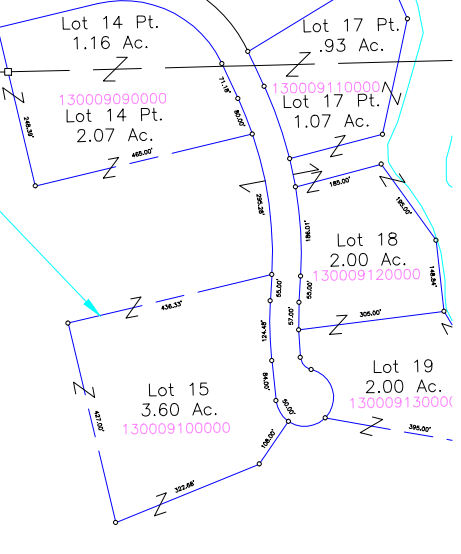


MADISON27 PE34TT
MADISON26 PE35TT

FAIRFIELD COUNTY T13N R19W
T13N R19W

MADISON26 PE35TT
MADISON25 PE36TT

SNORTIN RIDGE SUB.
- Lots 14-19 (Hocking County)
- (fka Plat Book G, Pgs. 5, 6, 7)
- Plat Cab. 1, pgs. 139 A,B, 140 A,B



Donald Werner Jr.
168-616
Tot. 79.00 Ac.
130006490000

188-122
21.04 Ac.
NW Pt.

OR186-754
4.5 Ac.
Snortin Ridge
Company, LLC
Tot. 73.80 Ac.

OR186-754
26.82 Ac.
Frac. 1, 2 Pts.
130006510000

Snortin Ridge
Subdivision
OR186-754
148-374
36.81 Ac.
"Reserve Area"
130006380000

Snortin Ridge
Subdivision
OR186-754
70.625 Ac.
"Reserve Area"
130006690000

Darrin & Shelby Davis
OR262-315
OR74-26
80.16 Ac.
E 1/2 NE
130006130000

30.00 Ac.
SW NW Pt.

182-668, 670
54.35 Ac.
NW Pt.

William & Katherine Wisse
Tot. 75.39 Ac.
130006410000

Wendell & S.
Ellen Williams
OR67-625
14.27 Ac.
NE Pt.
130006390100

Linda Strohm &
Charles Sahr
OR159-303
17.30 Ac.
NE Pt.
130006390000

Snortin Ridge
Company, LLC
Tot. 73.80 Ac.

OR186-750
42.48 Ac.
130006400000

Snortin Ridge
Company, LLC
OR186-750
134.02 Ac.
W 1/2 Pt.
130006680000

Frac. 6 9.00 Ac.

17.00 Ac.
SW NE, NW SE Pts.

Robin Gofberg
190-355
Tot. 37.00 Ac.
130006430000

James & Wendy
Thomson
OR230-737
20.26 Ac.
NE SE Pt.
130006500100

James & Wendy
Thomson
OR230-737
Tot. 28.29 Ac.
130006740100

6.00 Ac.
W 1/2 SW
130006820000

75.00 Ac.
SW Pt.

40.00 Ac.
W 1/2 E 1/2
SW

17.91 Ac.
N 1/2, Frac. 4

20.00 Ac.
SW NE, NW SE Pts.

David Thomas
OR212-900
Tot. 18.55 Ac.
130006450000
16.02 Ac.

Benny &
Patricia Nichols
OR85-490
Tot. 16.60 Ac.
130006500000

Morgan Chapel
U.M. Church
Trustees
Tot. 1.50 Ac.
(CT)
130006748400

Teresa
Azbell
OR76-247
OR160-874
12.00 Ac.
SW Pt.
130006810000

Joe Stump & Jodi S
OR205-783
14.33 Ac.
SE SW Pt.
130006790400

Ethelyn Carrol
OR8-307
2.99 Ac.
130006200100

Carlene Carroll
OR103-194, 207-533,
OR52-604
62.76 Ac.
S 1/2 SE Pt.
130006200000

Donald & Ronald Nida
OR19-511
Tot. 190.22 Ac.
130006440000

4.00 Ac. E 1/2 SW Pt.

4.00 Ac. E 1/2 E 1/2 SW Pt.

44.75 Ac.
SW SE, S 1/2
Frac. 4 Pt.

Dorothy &
Roy Young
217-574
21.19 Ac.
SE Pt.
130006520000

4.43 Ac.
NE SE Pt.

Benny &
Patricia Nichols
OR85-490
7.57 Ac.
130006740200

Virginia Corder
OR5-521,
OR228-203
12.00 Ac.
130006740300

Deighto
197
13.2
SE S
130006790000

Terry & Tammy Mosher
218-709
2.00 Ac.
130006200000

Ricky Jr. & Monica Hoover
OR244-832, 2.53 Ac.
130006200000

John & Debbie Grambo
OR282-54, 2.27 Ac.
130006210000

Randy & Brenda
Azbell
OR9-917
4.49 Ac.
130000480000

Donald &
Ronald Nida
Tot. 29.41 Ac.
Frac. 8 Pt.

Ronald Glick Jr.
OR5-248, 250
1.44 Ac.
130006470000

Robin &
Jerry Cassell
197-523
2.81 Ac.
130006270000

Raymond J.
Marie H. North
Trustees
OR160-702
3.50 Ac.
130006480000

Jeremy & Lisa
Dennis
OR255-776
4.61 Ac.
130006480000

Edgar M. & Donna B. Stump
129-388
13.00 Ac.
SE SE Pt.
130006530000

Homer Carrel
127-307
2.50 Ac.
SE Pt. *

Michael Justice
OR175-462
7.46 Ac.
130006540000

John McKinley
OR276-198
8.54 Ac.
130006740600

Jack D. &
Wretha Malone
138-676 *
Tot. 8.66 Ac.
130006800000

Christopher &
Kimberly Stump
OR35-497
2.00 Ac.
130006790200

Donald &
Ronald Nida
Tot. 29.41 Ac.
Frac. 8 Pt.

Donald &
Ronald Nida
Tot. 29.41 Ac.
Frac. 8 Pt.

Ronald Glick Jr.
OR5-248, 250
1.44 Ac.
130006470000

Robin &
Jerry Cassell
197-523
2.81 Ac.
130006270000

Raymond J.
Marie H. North
Trustees
OR160-702
3.50 Ac.
130006480000

Jeremy & Lisa
Dennis
OR255-776
4.61 Ac.
130006480000

Edgar M. & Donna B. Stump
129-388
13.00 Ac.
SE SE Pt.
130006530000

Homer Carrel
127-307
2.50 Ac.
SE Pt. *

Michael Justice
OR175-462
7.46 Ac.
130006540000

John McKinley
OR276-198
8.54 Ac.
130006740600

Jack D. &
Wretha Malone
138-676 *
Tot. 8.66 Ac.
130006800000

Christopher &
Kimberly Stump
OR35-497
2.00 Ac.
130006790200

Randy & Brenda
Azbell
OR9-917
4.49 Ac.
130000480000

Donald &
Ronald Nida
Tot. 29.41 Ac.
Frac. 8 Pt.

Ronald Glick Jr.
OR5-248, 250
1.44 Ac.
130006470000

Robin &
Jerry Cassell
197-523
2.81 Ac.
130006270000

Raymond J.
Marie H. North
Trustees
OR160-702
3.50 Ac.
130006480000

Jeremy & Lisa
Dennis
OR255-776
4.61 Ac.
130006480000

Edgar M. & Donna B. Stump
129-388
13.00 Ac.
SE SE Pt.
130006530000

Homer Carrel
127-307
2.50 Ac.
SE Pt. *

Michael Justice
OR175-462
7.46 Ac.
130006540000

John McKinley
OR276-198
8.54 Ac.
130006740600

Jack D. &
Wretha Malone
138-676 *
Tot. 8.66 Ac.
130006800000

Christopher &
Kimberly Stump
OR35-497
2.00 Ac.
130006790200

Randy & Brenda
Azbell
OR9-917
4.49 Ac.
130000480000

Donald &
Ronald Nida
Tot. 29.41 Ac.
Frac. 8 Pt.

Ronald Glick Jr.
OR5-248, 250
1.44 Ac.
130006470000

Robin &
Jerry Cassell
197-523
2.81 Ac.
130006270000

Raymond J.
Marie H. North
Trustees
OR160-702
3.50 Ac.
130006480000

Jeremy & Lisa
Dennis
OR255-776
4.61 Ac.
130006480000

Edgar M. & Donna B. Stump
129-388
13.00 Ac.
SE SE Pt.
130006530000

Homer Carrel
127-307
2.50 Ac.
SE Pt. *

Michael Justice
OR175-462
7.46 Ac.
130006540000

John McKinley
OR276-198
8.54 Ac.
130006740600

Jack D. &
Wretha Malone
138-676 *
Tot. 8.66 Ac.
130006800000

Christopher &
Kimberly Stump
OR35-497
2.00 Ac.
130006790200

Randy & Brenda
Azbell
OR9-917
4.49 Ac.
130000480000

Donald &
Ronald Nida
Tot. 29.41 Ac.
Frac. 8 Pt.

Ronald Glick Jr.
OR5-248, 250
1.44 Ac.
130006470000

Robin &
Jerry Cassell
197-523
2.81 Ac.
130006270000

Raymond J.
Marie H. North
Trustees
OR160-702
3.50 Ac.
130006480000

Jeremy & Lisa
Dennis
OR255-776
4.61 Ac.
130006480000

Edgar M. & Donna B. Stump
129-388
13.00 Ac.
SE SE Pt.
130006530000

Homer Carrel
127-307
2.50 Ac.
SE Pt. *

Michael Justice
OR175-462
7.46 Ac.
130006540000

John McKinley
OR276-198
8.54 Ac.
130006740600

Jack D. &
Wretha Malone
138-676 *
Tot. 8.66 Ac.
130006800000

Christopher &
Kimberly Stump
OR35-497
2.00 Ac.
130006790200

Randy & Brenda
Azbell
OR9-917
4.49 Ac.
130000480000

Donald &
Ronald Nida
Tot. 29.41 Ac.
Frac. 8 Pt.

Ronald Glick Jr.
OR5-248, 250
1.44 Ac.
130006470000

Robin &
Jerry Cassell
197-523
2.81 Ac.
130006270000

Raymond J.
Marie H. North
Trustees
OR160-702
3.50 Ac.
130006480000

Jeremy & Lisa
Dennis
OR255-776
4.61 Ac.
130006480000

Edgar M. & Donna B. Stump
129-388
13.00 Ac.
SE SE Pt.
130006530000

Homer Carrel
127-307
2.50 Ac.
SE Pt. *

Michael Justice
OR175-462
7.46 Ac.
130006540000

John McKinley
OR276-198
8.54 Ac.
130006740600

Jack D. &
Wretha Malone
138-676 *
Tot. 8.66 Ac.
130006800000

Christopher &
Kimberly Stump
OR35-497
2.00 Ac.
130006790200

Randy & Brenda
Azbell
OR9-917
4.49 Ac.
130000480000

Donald &
Ronald Nida
Tot. 29.41 Ac.
Frac. 8 Pt.

Ronald Glick Jr.
OR5-248, 250
1.44 Ac.
130006470000

Robin &
Jerry Cassell
197-523
2.81 Ac.
130006270000

Raymond J.
Marie H. North
Trustees
OR160-702
3.50 Ac.
130006480000

Jeremy & Lisa
Dennis
OR255-776
4.61 Ac.
130006480000

Edgar M. & Donna B. Stump
129-388
13.00 Ac.
SE SE Pt.
130006530000

Homer Carrel
127-307
2.50 Ac.
SE Pt. *

Michael Justice
OR175-462
7.46 Ac.
130006540000

John McKinley
OR276-198
8.54 Ac.
130006740600

Jack D. &
Wretha Malone
138-676 *
Tot. 8.66 Ac.
130006800000

Christopher &
Kimberly Stump
OR35-497
2.00 Ac.
130006790200

Randy & Brenda
Azbell
OR9-917
4.49 Ac.
130000480000

Donald &
Ronald Nida
Tot. 29.41 Ac.
Frac. 8 Pt.

Ronald Glick Jr.
OR5-248, 250
1.44 Ac.
130006470000

Robin &
Jerry Cassell
197-523
2.81 Ac.
130006270000

Raymond J.
Marie H. North
Trustees
OR160-702
3.50 Ac.
130006480000

Jeremy & Lisa
Dennis
OR255-776
4.61 Ac.
130006480000

Edgar M. & Donna B. Stump
129-388
13.00 Ac.
SE SE Pt.
130006530000

Homer Carrel
127-307
2.50 Ac.
SE Pt. *

Michael Justice
OR175-462
7.46 Ac.
130006540000

John McKinley
OR276-198
8.54 Ac.
130006740600

Jack D. &
Wretha Malone
138-676 *
Tot. 8.66 Ac.
130006800000

Christopher &
Kimberly Stump
OR35-497
2.00 Ac.
130006790200

Randy & Brenda
Azbell
OR9-917
4.49 Ac.
130000480000

Donald &
Ronald Nida
Tot. 29.41 Ac.
Frac. 8 Pt.

Ronald Glick Jr.
OR5-248, 250
1.44 Ac.
130006470000

Robin &
Jerry Cassell
197-523
2.81 Ac.
130006270000

Raymond J.
Marie H. North
Trustees
OR160-702
3.50 Ac.
130006480000

Jeremy & Lisa
Dennis
OR255-776
4.61 Ac.
130006480000

Edgar M. & Donna B. Stump
129-388
13.00 Ac.
SE SE Pt.
130006530000

Homer Carrel
127-307
2.50 Ac.
SE Pt. *

Michael Justice
OR175-462
7.46 Ac.
130006540000

John McKinley
OR276-198
8.54 Ac.
130006740600

Jack D. &
Wretha Malone
138-676 *
Tot. 8.66 Ac.
130006800000

Christopher &
Kimberly Stump
OR35-497
2.00 Ac.
130006790200

Randy & Brenda
Azbell
OR9-917
4.49 Ac.
130000480000

Donald &
Ronald Nida
Tot. 29.41 Ac.
Frac. 8 Pt.

Ronald Glick Jr.
OR5-248, 250
1.44 Ac.
130006470000

Robin &
Jerry Cassell
197-523
2.81 Ac.
130006270000

Raymond J.
Marie H. North
Trustees
OR160-702
3.50 Ac.
130006480000

Jeremy & Lisa
Dennis
OR255-776
4.61 Ac.
130006480000

Edgar M. & Donna B. Stump
129-388
13.00 Ac.
SE SE Pt.
130006530000

Homer Carrel
127-307
2.50 Ac.
SE Pt. *

Michael Justice
OR175-462
7.46 Ac.
130006540000

John McKinley
OR276-198
8.54 Ac.
130006740600

Jack D. &
Wretha Malone
138-676 *
Tot. 8.66 Ac.
130006800000

Christopher &
Kimberly Stump
OR35-497
2.00 Ac.
130006790200

<