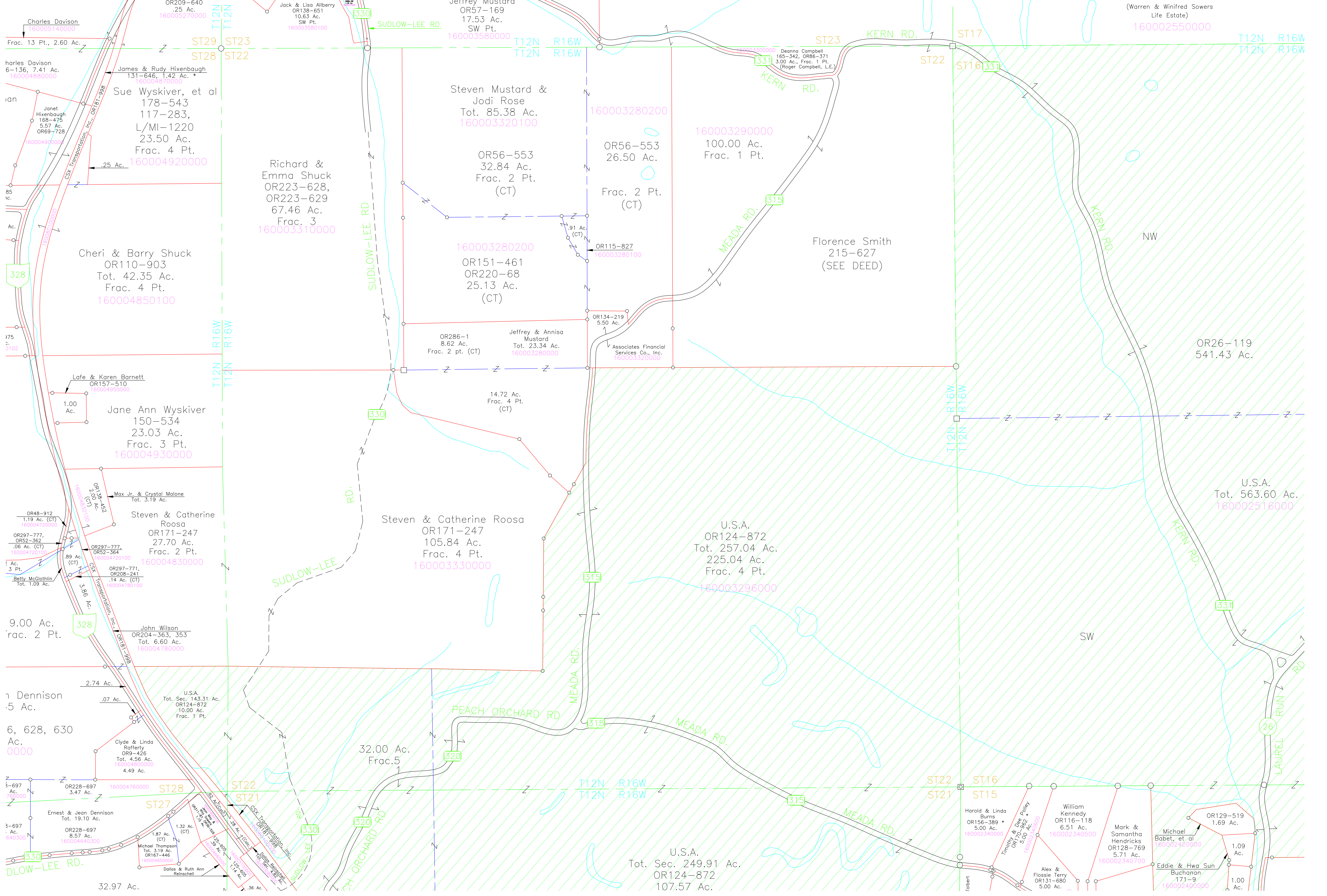


30000

James Sowers
198-682
SW Pt.
50.00 Ac.
(Warren & Winifred Sowers
Life Estate)
160002550000



Charles Davison
160005140000
Frac. 13 Pt., 2.60 Ac.

Charles Davison
6-136, 7.41 Ac.
160004880000

Janet Hixenbaugh
168-475
5.57 Ac.
OR69-728
160004970000

Sue Wyskiver, et al
178-543
117-283,
L/MI-1220
23.50 Ac.
Frac. 4 Pt.
160004920000

Cheri & Barry Shuck
OR110-903
Tot. 42.35 Ac.
Frac. 4 Pt.
160004850100

Lafe & Karen Barnett
OR157-510
1.00 Ac.
160004950000

Jane Ann Wyskiver
150-534
23.03 Ac.
Frac. 3 Pt.
160004930000

Max Jr. & Crystal Malone
Tot. 3.19 Ac.
160004830100

Steven & Catherine Roosa
OR171-247
27.70 Ac.
Frac. 2 Pt.
160004830000

OR48-912
1.19 Ac. (CT)
160004720000

OR297-777,
OR52-362
.06 Ac. (CT)
160004720100

OR297-771,
OR208-241
.14 Ac. (CT)
160004780100

Betty McClothlin
Tot. 1.09 Ac.
160004780100

John Wilson
OR204-363, 353
Tot. 6.60 Ac.
160004780000

U.S.A.
Tot. Sec. 143.31 Ac.
OR124-872
10.00 Ac.
Frac. 1 Pt.

Clyde & Linda Rafferty
OR9-426
Tot. 4.56 Ac.
160004800000
4.49 Ac.

OR228-697
3.47 Ac.
160004760000

Ernest & Jean Dennison
Tot. 19.10 Ac.
160004640300

Michael Thompson
Tot. 3.19 Ac.
OR167-446
10.00 Ac.
160004800000

Dallas & Ruth Ann Reinschell
1.87 Ac. (CT)
1.32 Ac. (CT)
160004800000

32.97 Ac.

Jack & Lisa Alberry
OR138-651
10.63 Ac.
SW Pt.
160003580100

Ruth Downour
OR270-559
1.17 Ac.
160003590000

Jeffrey Mustard
OR57-169
17.53 Ac.
SW Pt.
160003580000

Steven Mustard & Jodi Rose
Tot. 85.38 Ac.
160003320100

Richard & Emma Shuck
OR223-628,
OR223-629
67.46 Ac.
Frac. 3
160003310000

OR56-553
32.84 Ac.
Frac. 2 Pt.
(CT)

OR151-461
OR220-68
25.13 Ac.
(CT)

OR286-1
8.62 Ac.
Frac. 2 pt. (CT)

Jeffrey & Annisa Mustard
Tot. 23.34 Ac.
160003280000

OR115-827
5.91 Ac. (CT)
160003280100

OR134-219
5.50 Ac.
160003280100

Associates Financial Services Co., Inc.
160003320000

14.72 Ac.
Frac. 4 Pt.
(CT)

Steven & Catherine Roosa
OR171-247
105.84 Ac.
Frac. 4 Pt.
160003330000

U.S.A.
OR124-872
225.04 Ac.
Frac. 4 Pt.
160003296000

U.S.A.
Tot. Sec. 143.31 Ac.
OR124-872
10.00 Ac.
Frac. 1 Pt.

Harold & Linda Burns
OR156-389
5.00 Ac.
160002340000

Timothy & Dee Payley
OR170-982
5.00 Ac.
160002340000

William Kennedy
OR116-118
6.51 Ac.
160002340500

Mark & Samantha Hendricks
OR128-769
5.71 Ac.
160002340700

Michael Babet, et al
OR129-519
1.69 Ac.
160002340000

Eddie & Hwa Sun Buchanan
171-9
1.00 Ac.
160002340000

Alex & Flossie Terry
OR131-680
5.00 Ac.
160002340000

Deanna Campbell
165-342, OR86-371
3.00 Ac., Frac. 1 Pt.
(Roger Campbell, L.E.)
160003290000

OR56-553
26.50 Ac.
Frac. 2 Pt. (CT)

OR56-553
32.84 Ac.
Frac. 2 Pt. (CT)

OR115-827
5.91 Ac. (CT)
160003280100

OR134-219
5.50 Ac.
160003280100

Associates Financial Services Co., Inc.
160003320000

14.72 Ac.
Frac. 4 Pt. (CT)

U.S.A.
OR124-872
225.04 Ac.
Frac. 4 Pt.
160003296000

U.S.A.
Tot. Sec. 143.31 Ac.
OR124-872
10.00 Ac.
Frac. 1 Pt.

Harold & Linda Burns
OR156-389
5.00 Ac.
160002340000

Timothy & Dee Payley
OR170-982
5.00 Ac.
160002340000

William Kennedy
OR116-118
6.51 Ac.
160002340500

Mark & Samantha Hendricks
OR128-769
5.71 Ac.
160002340700

Michael Babet, et al
OR129-519
1.69 Ac.
160002340000

Eddie & Hwa Sun Buchanan
171-9
1.00 Ac.
160002340000

Alex & Flossie Terry
OR131-680
5.00 Ac.
160002340000

U.S.A.
Tot. Sec. 249.91 Ac.
OR124-872
107.57 Ac.

U.S.A.
Tot. Sec. 249.91 Ac.
OR124-872
107.57 Ac.

U.S.A.
Tot. Sec. 249.91 Ac.
OR124-872
107.57 Ac.

U.S.A.
Tot. Sec. 249.91 Ac.
OR124-872
107.57 Ac.

U.S.A.
Tot. Sec. 249.91 Ac.
OR124-872
107.57 Ac.

U.S.A.
Tot. Sec. 249.91 Ac.
OR124-872
107.57 Ac.

U.S.A.
Tot. Sec. 249.91 Ac.
OR124-872
107.57 Ac.