

T14N R16W
T13N R16W

GR06 WD36

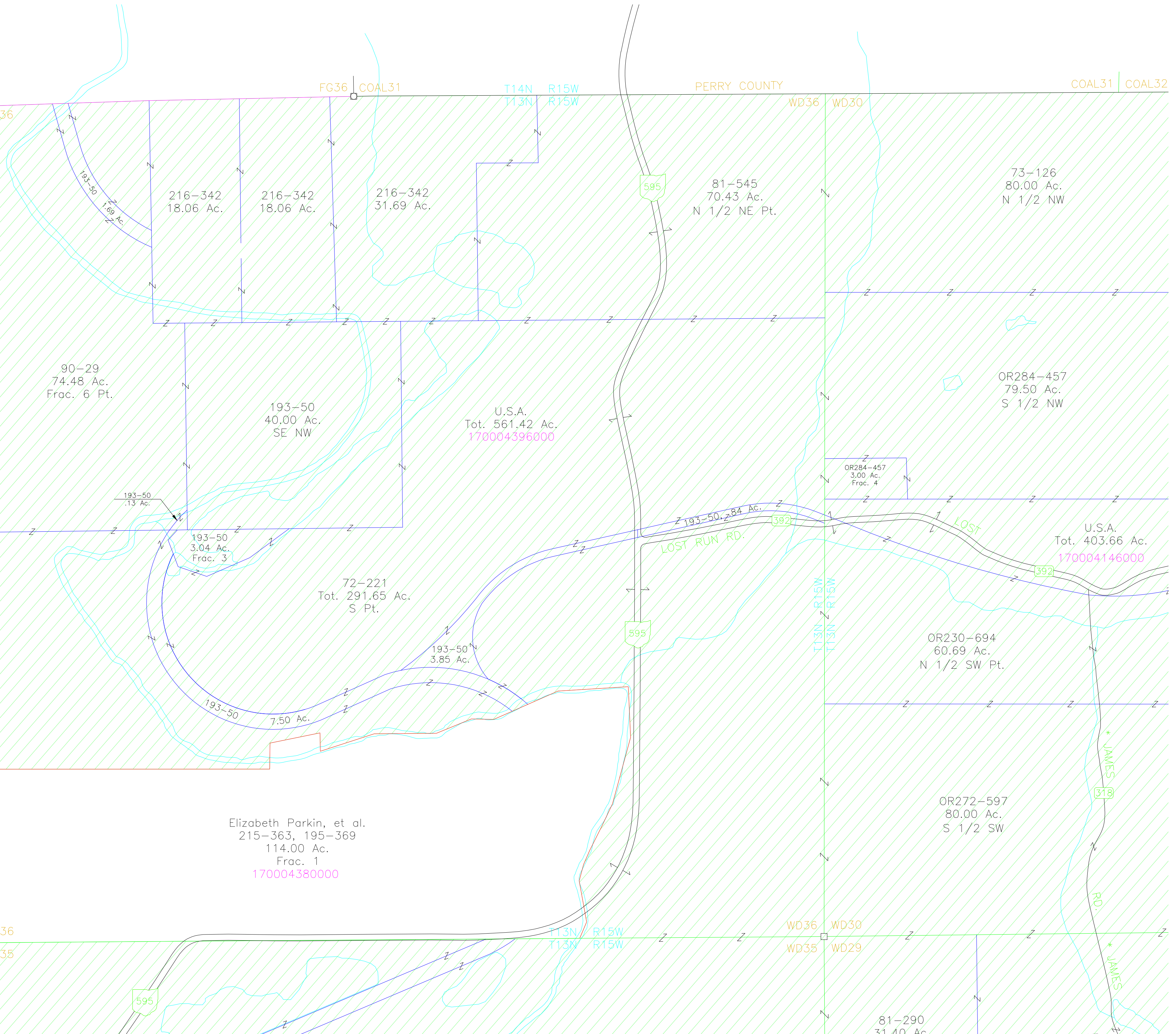
FG36 COAL31

T14N R15W
T13N R15W

PERRY COUNTY

WD36 WD30

COAL31 COAL32



216-342
18.06 Ac.

216-342
18.06 Ac.

216-342
31.69 Ac.

81-545
70.43 Ac.
N 1/2 NE Pt.

73-126
80.00 Ac.
N 1/2 NW

90-29
74.48 Ac.
Frac. 6 Pt.

193-50
40.00 Ac.
SE NW

U.S.A.
Tot. 561.42 Ac.
170004396000

OR284-457
79.50 Ac.
S 1/2 NW

OR284-457
3.00 Ac.
Frac. 4

193-50
.13 Ac.

193-50
3.04 Ac.
Frac. 3

72-221
Tot. 291.65 Ac.
S Pt.

193-50
3.85 Ac.

U.S.A.
Tot. 403.66 Ac.
170004146000

OR230-694
60.69 Ac.
N 1/2 SW Pt.

193-50
7.50 Ac.

Elizabeth Parkin, et al.
215-363, 195-369
114.00 Ac.
Frac. 1
170004380000

OR272-597
80.00 Ac.
S 1/2 SW

GR06 WD36

GR05 WD35

T13N R15W
T13N R15W

WD36 WD30

WD35 WD29

81-290
31.40 Ac.