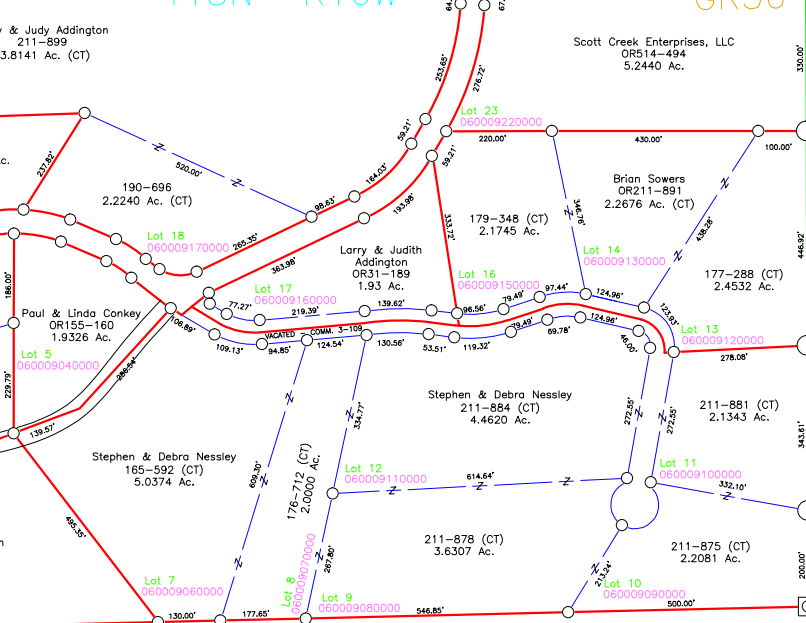


T14N R16W
T13N R16W

FG31 FG32

T14N R16W
T13N R16W



HUNTERS WOODS ESTATES
- Lots 1-24
- fno Plat Book G, Pgs. 30, 31
- nka Plat Cab. 1, Pgs. 151 B, 152 A
(OR438-750, 752, Lot 19 Building Setback Waiver)

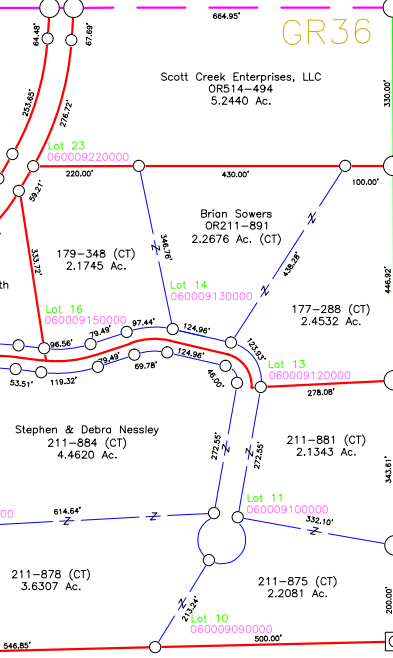
Rolling Trails, Ltd.
OR290-840
79.36 Ac.
Frac. 5 Pt.
(CT)
060006110000

208-349
24.63 Ac.
Frac. 7 Pt.

Bruce & Patricia
Cremean, Trustees
OR399-73
7.69 Ac.
Lot 8 Pt.
060006150000

Cynthia Donahy
OR3-790
Tot. 20.89 Ac.
060005930000

Ronald Garner
OR317-29
9.63 Ac.
060005690000



OR299-372
71.50 Ac.
Frac. 5 Pt.
060004950000

OR290-840
46.92 Ac.
Frac. 5 Pt.
(CT)
060004910300

His Hills, LLC
OR401-283
1.35 Ac.
Frac. 6 Pt.
060006160000

10.00 Ac.
Frac. 7 Pt.

208-281
2.64 Ac.
Frac. 11 Pt.

Kilbarger
Construction, Inc.
OR111-851
Tot. 62.62 Ac.
060006100000

39.62 Ac.
Frac. 12 Pt.

Logan Log Homes, Inc.
OR70-441
13.05 Ac.

OR299-372
9.00 Ac.
Frac. 8 Pt.
060004950000

OR299-372
10.81 Ac.
Frac. 7 Pt.
060004950000

Rolling Trails, LTD
Tot. 138.23 Ac.

OR401-285
15.39 Ac. *
060004910000

OR401-283
2.32 Ac.
060004910200

Joe & Pamela
Southerns
OR472-971
6.9748 Ac.
Frac. 5 Pt.
060004910100

Kilbarger
Construction, Inc.
OR111-851
50.00 Ac.
060005040000

PINEHURST SUB.
- Lots 1-9
- Plat Cab. 1, Pg. 199 A, B

Norman G. Garleff
OR510-278
20.00 Ac.

OR299-372
9.00 Ac.
Frac. 8 Pt.
060004950000

OR299-372
10.81 Ac.
Frac. 7 Pt.
060004950000

OR290-840
46.92 Ac.
Frac. 5 Pt.
(CT)
060004910300

OR401-285
15.39 Ac. *
060004910000

OR401-283
2.32 Ac.
060004910200

Joe & Pamela
Southerns
OR472-971
6.9748 Ac.
Frac. 5 Pt.
060004910100

Kilbarger
Construction, Inc.
OR111-851
50.00 Ac.
060005040000

PINEHURST SUB.
- Lots 1-9
- Plat Cab. 1, Pg. 199 A, B

Norman G. Garleff
OR510-278
20.00 Ac.

Linda G. Conner, Robin L. Inboden & Shelby S. Mullins
OR506-688, OR265-736
13.93 Ac.
Frac. 8 Pt.
060004960000

OR299-372
9.00 Ac.
Frac. 8 Pt.
060004950000

OR299-372
10.81 Ac.
Frac. 7 Pt.
060004950000

Gary & Eileen Waugh
Tot. 108.19 Ac.

214-674
95.07 Ac.
060005010000

OR118-766,
161-612
101.9645 Ac.
(CT)

OR118-766,
161-612
101.9645 Ac.
(CT)

OR118-766,
161-612
101.9645 Ac.
(CT)

OR118-766,
161-612
101.9645 Ac.
(CT)

OR118-766,
161-612
101.9645 Ac.
(CT)

OR118-766,
161-612
101.9645 Ac.
(CT)

OR118-766,
161-612
101.9645 Ac.
(CT)

OR118-766,
161-612
101.9645 Ac.
(CT)

OR118-766,
161-612
101.9645 Ac.
(CT)

Wanda & Sarah Devore, Trustees
OR396-707, OR538-32
12.07 Ac.
060004970000

OR299-372
9.00 Ac.
Frac. 8 Pt.
060004950000

OR299-372
10.81 Ac.
Frac. 7 Pt.
060004950000

Gary & Eileen Waugh
Tot. 108.19 Ac.

214-674
95.07 Ac.
060005010000

OR118-766,
161-612
101.9645 Ac.
(CT)

OR118-766,
161-612
101.9645 Ac.
(CT)

OR118-766,
161-612
101.9645 Ac.
(CT)

OR118-766,
161-612
101.9645 Ac.
(CT)

OR118-766,
161-612
101.9645 Ac.
(CT)

OR118-766,
161-612
101.9645 Ac.
(CT)

OR118-766,
161-612
101.9645 Ac.
(CT)

OR118-766,
161-612
101.9645 Ac.
(CT)

OR118-766,
161-612
101.9645 Ac.
(CT)

Jerry & Kimberly Downs
Tot. Sec. 52.12 Ac.

OR379-450
46.00 Ac.
Frac. 9 Pt.
060003500100

OR379-450
46.00 Ac.
Frac. 9 Pt.
060003500100

Jerry & Kimberly Downs
Tot. Sec. 52.12 Ac.

OR379-450
46.00 Ac.
Frac. 9 Pt.
060003500100

OR379-450
46.00 Ac.
Frac. 9 Pt.
060003500100

OR379-450
46.00 Ac.
Frac. 9 Pt.
060003500100

OR379-450
46.00 Ac.
Frac. 9 Pt.
060003500100

OR379-450
46.00 Ac.
Frac. 9 Pt.
060003500100

OR379-450
46.00 Ac.
Frac. 9 Pt.
060003500100

OR379-450
46.00 Ac.
Frac. 9 Pt.
060003500100

OR379-450
46.00 Ac.
Frac. 9 Pt.
060003500100

OR379-450
46.00 Ac.
Frac. 9 Pt.
060003500100

OR379-450
46.00 Ac.
Frac. 9 Pt.
060003500100

Jerry & Kimberly Downs
Tot. Sec. 52.12 Ac.

OR379-450
46.00 Ac.
Frac. 9 Pt.
060003500100

OR379-450
46.00 Ac.
Frac. 9 Pt.
060003500100

Jerry & Kimberly Downs
Tot. Sec. 52.12 Ac.

OR379-450
46.00 Ac.
Frac. 9 Pt.
060003500100

OR379-450
46.00 Ac.
Frac. 9 Pt.
060003500100

OR379-450
46.00 Ac.
Frac. 9 Pt.
060003500100

OR379-450
46.00 Ac.
Frac. 9 Pt.
060003500100

OR379-450
46.00 Ac.
Frac. 9 Pt.
060003500100

OR379-450
46.00 Ac.
Frac. 9 Pt.
060003500100

OR379-450
46.00 Ac.
Frac. 9 Pt.
060003500100

OR379-450
46.00 Ac.
Frac. 9 Pt.
060003500100

OR379-450
46.00 Ac.
Frac. 9 Pt.
060003500100

OR379-450
46.00 Ac.
Frac. 9 Pt.
060003500100

OR181-834,
OR53-43, 5
150-59 *
73.41 Ac.
Frac. 8 Pt

OR181-834,
OR53-43, 5
150-59 *
73.41 Ac.
Frac. 8 Pt

OR181-834,
OR53-43, 5
150-59 *
73.41 Ac.
Frac. 8 Pt

OR181-834,
OR53-43, 5
150-59 *
73.41 Ac.
Frac. 8 Pt

OR181-834,
OR53-43, 5
150-59 *
73.41 Ac.
Frac. 8 Pt

OR181-834,
OR53-43, 5
150-59 *
73.41 Ac.
Frac. 8 Pt

OR181-834,
OR53-43, 5
150-59 *
73.41 Ac.
Frac. 8 Pt

OR181-834,
OR53-43, 5
150-59 *
73.41 Ac.
Frac. 8 Pt

OR181-834,
OR53-43, 5
150-59 *
73.41 Ac.
Frac. 8 Pt

OR181-834,
OR53-43, 5
150-59 *
73.41 Ac.
Frac. 8 Pt

OR181-834,
OR53-43, 5
150-59 *
73.41 Ac.
Frac. 8 Pt

OR181-834,
OR53-43, 5
150-59 *
73.41 Ac.
Frac. 8 Pt

OR181-834,
OR53-43, 5
150-59 *
73.41 Ac.
Frac. 8 Pt

OR181-834,
OR53-43, 5
150-59 *
73.41 Ac.
Frac. 8 Pt

Kevin Nutter
OR478-535 *
11.8255 Ac.
060003710000
060003750000

Christina Nutter
OR324-631
.02 Ac.
060003749000

Christina Nutter
.9747 Ac.
060003440000

Kevin Nutter
OR178-535 *

Sandra Webster,
Trustee
OR355-430
5.007 Ac.
060003471000

Christopher & Dorothy
Toops
OR380-295, 1.84 Ac.

Larry Gerstner,
Trustee
OR408-632
4.16 Ac.
060003730100

Kevin Nutter
OR178-535 *

Sandra Webster,
Trustee
OR355-430
5.007 Ac.
060003471000

Jason Geil
OR544-766
5.006 Ac.