

Trustee
OR408-632
4.16 Ac.

060003730100

NUTTER SUB.

- Lots 1-6

- Plat Cab. 2, Pgs. 73, 74

Christina Nutter
OR324-631
.02 Ac.

060003740000

Christina Nutter
OR324-631

060003440000

.9747 Ac.

1.9767 Ac.

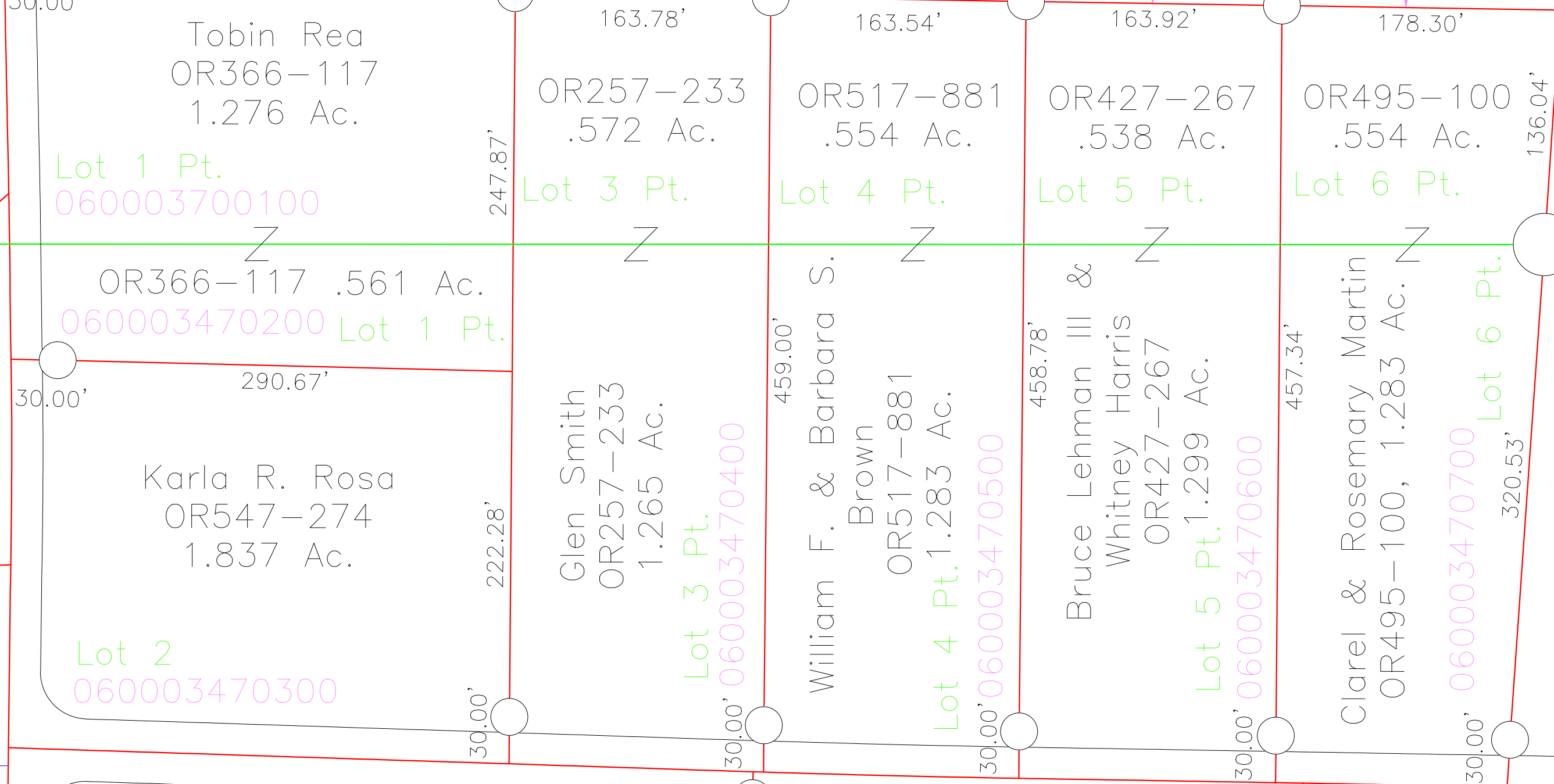
060003460100

Sandra Webster,
Trustee

OR355-430
5.007 Ac.

Jason Geil
OR544-766

Clare
OR549-
AC.
Pt.



Lot 1 Pt.
060003700100

OR366-117 .561 Ac.
060003470200 Lot 1 Pt.

Lot 2
060003470300

30.00' 297.53' 12.17'
Tobin Rea
OR366-117
1.276 Ac.

163.78' 247.87'
OR257-233
.572 Ac.

Glen Smith
OR257-233
1.265 Ac.

Lot 3 Pt.
060003470400

163.54' 459.00'
OR517-881
.554 Ac.

William F. & Barbara S. Brown
OR517-881
1.283 Ac.

Lot 4 Pt.
060003470500

163.92' 458.78'
OR427-267
.538 Ac.

Bruce Lehman III & Whitney Harris
OR427-267
1.299 Ac.

Lot 5 Pt.
060003470600

178.30' 136.04'
OR495-100
.554 Ac.

Clarel & Rosemary Martin
OR495-100, 1.283 Ac.

Lot 6 Pt.
060003470700

060003700200

060003700300

060003700400

060003700500