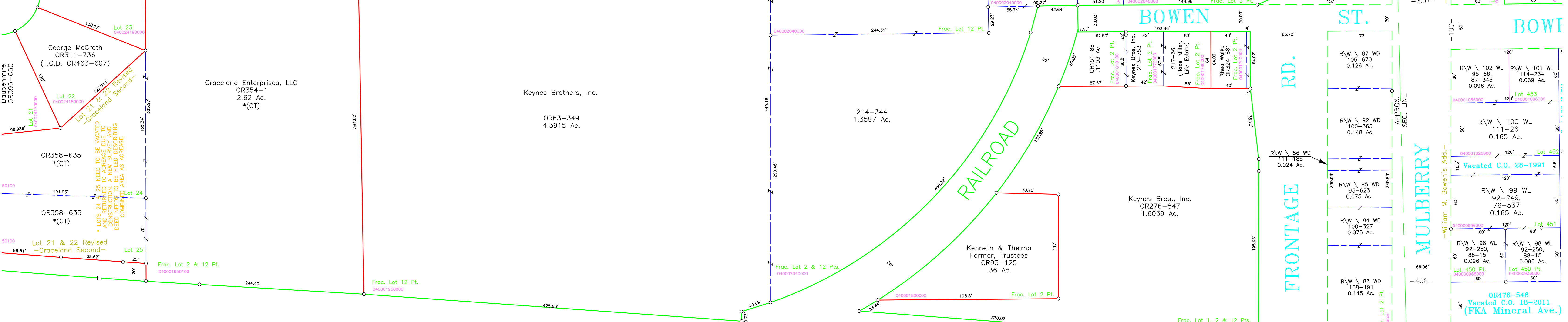
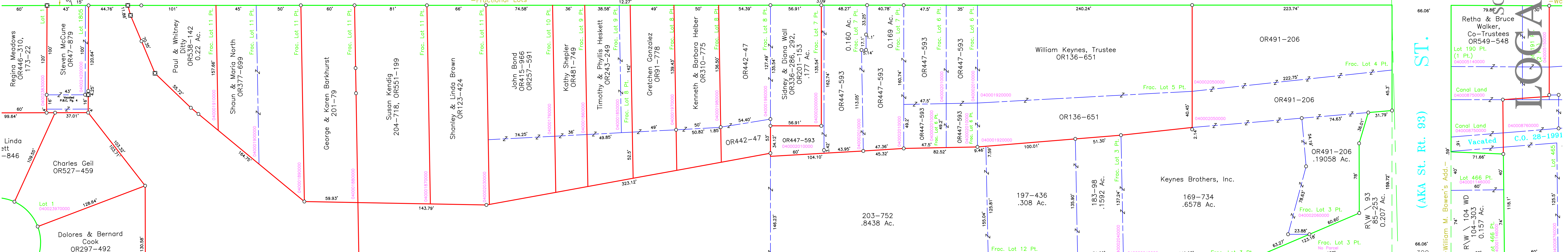


ST. Sec. 11 Sec. 14 APPROX. SEC. LINE FRONT ST.



James & Anthony Kilbarger
212-648

040001840000

RAILROAD

BOWEN ST.

MULBERRY RD.

FRONTAGE

MULBERRY

MULBERRY (AKA St. Rt. 93)

MULBERRY

BOWEN ST.

SCALE 1" = 50'

U.S. Route 3 LOGAN CITY 15

LOGAN CITY 15