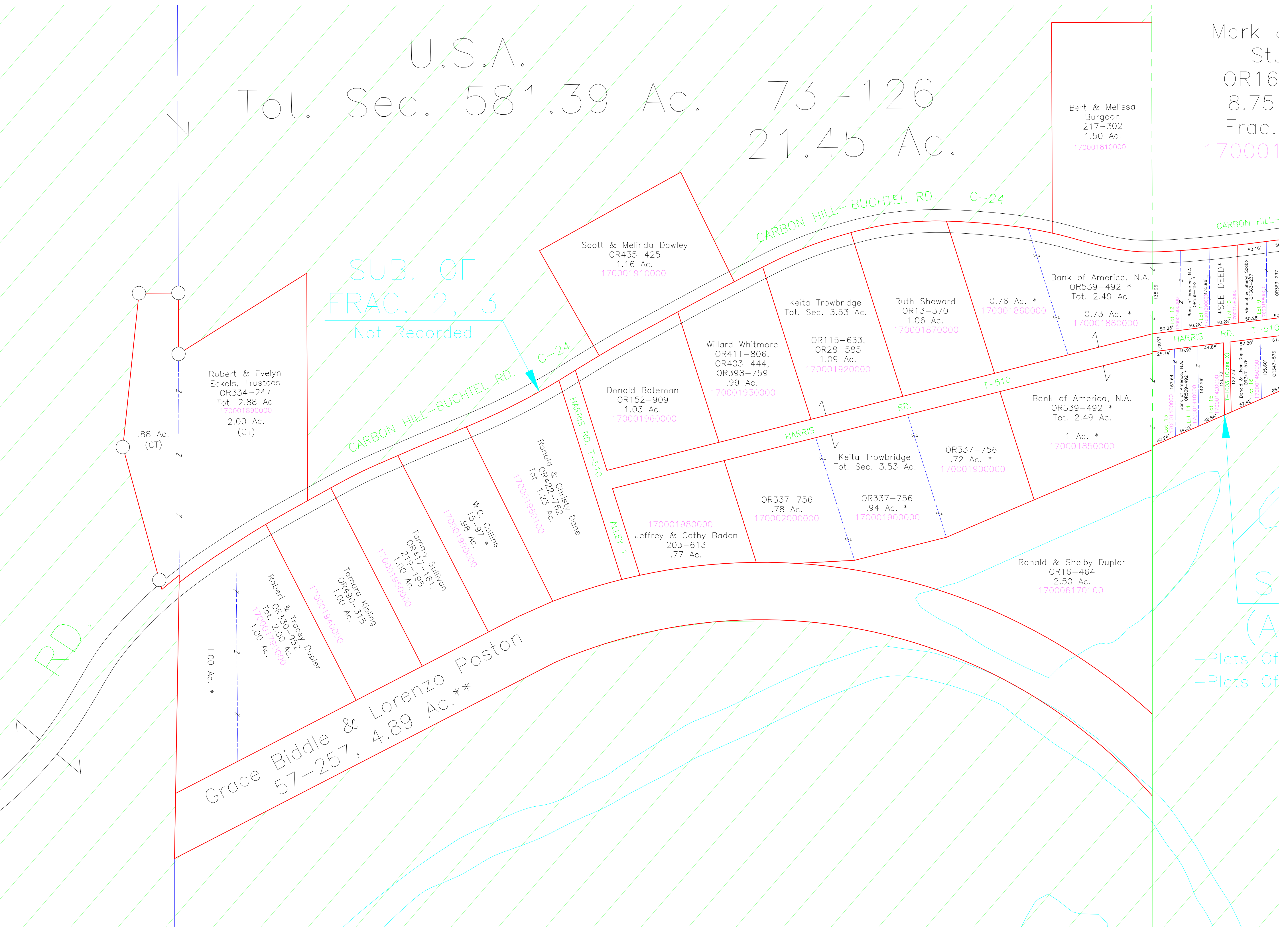


U.S.A.
Tot. Sec. 581.39 Ac. 73-126
21.45 Ac.

Mark
Stu
OR16
8.75
Frac.
170001



SUB. OF
FRAC. 2, 3
Not Recorded

Grace Biddle & Lorenzo Poston
57-257, 4.89 Ac.**

Robert & Evelyn
Eckels, Trustees
OR334-247
Tot. 2.88 Ac.
170001890000
2.00 Ac.
(CT)

Scott & Melinda Dawley
OR435-425
1.16 Ac.
170001910000

Keita Trowbridge
Tot. Sec. 3.53 Ac.

Ruth Sheward
OR13-370
1.06 Ac.
170001870000

Bank of America, N.A.
OR539-492 *
Tot. 2.49 Ac.
170001880000

Willard Whitmore
OR411-806,
OR403-444,
OR398-759
.99 Ac.
170001930000

Donald Bateman
OR152-909
1.03 Ac.
170001960000

Ronald & Christy Dore
OR429-762
Tot. 1.25 Ac.
170001980100

W.C. Collins
15-97 *
.98 Ac.
170001990000

Tammy Sullivan
OR47-191,
OR49-195
1.00 Ac.
170001950000

Tamara Kising
OR49-515
1.00 Ac.
170001940000

Robert & Tracey Dupler
OR330-952
Tot. 2.00 Ac.
170001900000
1.00 Ac. *

Jeffrey & Cathy Baden
203-613
.77 Ac.
170001980000

OR337-756
.78 Ac.
170002000000

OR337-756
.94 Ac. *
170001900000

Keita Trowbridge
Tot. Sec. 3.53 Ac.

OR337-756
.72 Ac. *
170001900000

Bank of America, N.A.
OR539-492 *
Tot. 2.49 Ac.
170001850000
1 Ac. *

Ronald & Shelby Dupler
OR16-464
2.50 Ac.
170006170100

Bert & Melissa
Burgoon
217-302
1.50 Ac.
170001810000

Bank of America, N.A.
OR539-492 *
Tot. 2.49 Ac.
170001860000
0.76 Ac. *
170001860000

Bank of America, N.A.
OR539-492 *
Tot. 2.49 Ac.
170001850000
1 Ac. *

Ronald & Shelby Dupler
OR16-464
2.50 Ac.
170006170100

-Plats Of
-Plats Of